

LOC/DME I-JHW 109.7 Chan 34	APP CRS 249°	Rwy Ldg TDZE Apt Elev	5300 1721 1723
---	------------------------	-----------------------------	---

ILS or LOC RWY 25

CHAUTAUQUA COUNTY/JAMESTOWN (JHW)

NA Autopilot coupled approach NA below 2420. Circling to Rwy 13/31 NA at night. VDP NA when using DKK altimeter setting. When local altimeter setting not received, use DKK altimeter setting and increase S-ILS 25 DA to 2166 feet and all visibilities $\frac{3}{8}$ SM, increase all MDA 200 feet, increase S-LOC 25 visibilities Cat A/B $\frac{1}{4}$ SM, Cat C/D $\frac{1}{2}$ SM, increase Circling Cat C/D $\frac{1}{2}$ SM, DIPRE fix minimums increase S-LOC 25 visibilities Cat C/D $\frac{1}{2}$ SM, Circling visibilities Cat C $\frac{1}{2}$ SM, Cat D $\frac{3}{4}$ SM.

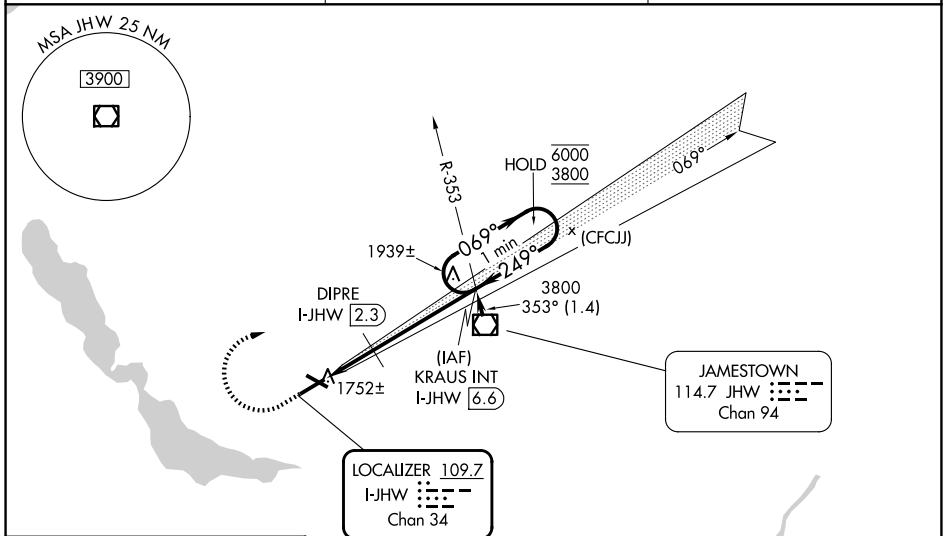
MALS

MISSED APPROACH: Climb to 2420 then climbing right turn to 3800 on heading 125° and I-JHW localizer course NE (069°) to KRAUS INT/I-JHW 6.6 DME and hold. Continue climb-in-hold.

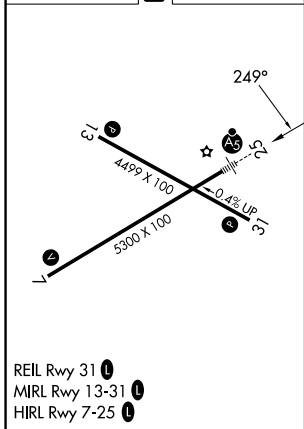
AWOS-3PT
118.425

BUFFALO APP CON *
126.05

UNICOM
122.975 (CTAF) **1**



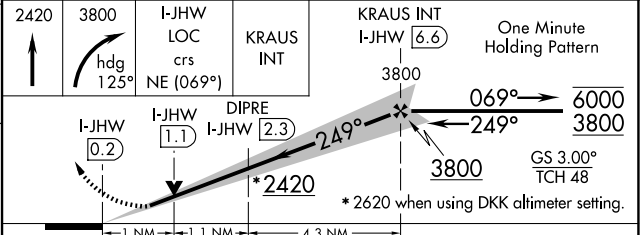
ELEV 1723 **D** TDZE 1721



REIL Rwy 31 **1**
MIRL Rwy 13-31 **1**
HIRL Rwy 7-25 **1**

FAF to MAP 6.4 NM

Knots	60	90	120	150	180
Min:Sec	6:24	4:16	3:12	2:34	2:08



CATEGORY	A	B	C	D
S-ILS 25	1971- $\frac{1}{2}$		250 (300- $\frac{1}{2}$)	
S-LOC 25	2420- $\frac{1}{2}$	699 (700- $\frac{1}{2}$)	2420-1 $\frac{1}{2}$	699 (700-1 $\frac{1}{2}$)
CIRCLING	2420-1	697 (700-1)	2420-2 697 (700-2)	2420-2 $\frac{1}{4}$ 697 (700-2 $\frac{1}{4}$)
DIPRE FIX MINIMUMS (DME REQUIRED)				
S-LOC 25	2080- $\frac{1}{2}$	359 (400- $\frac{1}{2}$)	2080- $\frac{5}{8}$	359 (400- $\frac{5}{8}$)
CIRCLING	2200-1	477 (500-1)	2260-1 $\frac{1}{2}$ 537 (600-1 $\frac{1}{2}$)	2340-2 617 (700-2)

NE-2, 14 MAY 2026 to 11 JUN 2026

NE-2, 14 MAY 2026 to 11 JUN 2026