

APP CRS <b>309°</b>	Rwy Ldg TDZE Apt Elev	<b>4499</b> <b>1715</b> <b>1723</b>
------------------------	-----------------------------	---

# RNAV (GPS) RWY 31

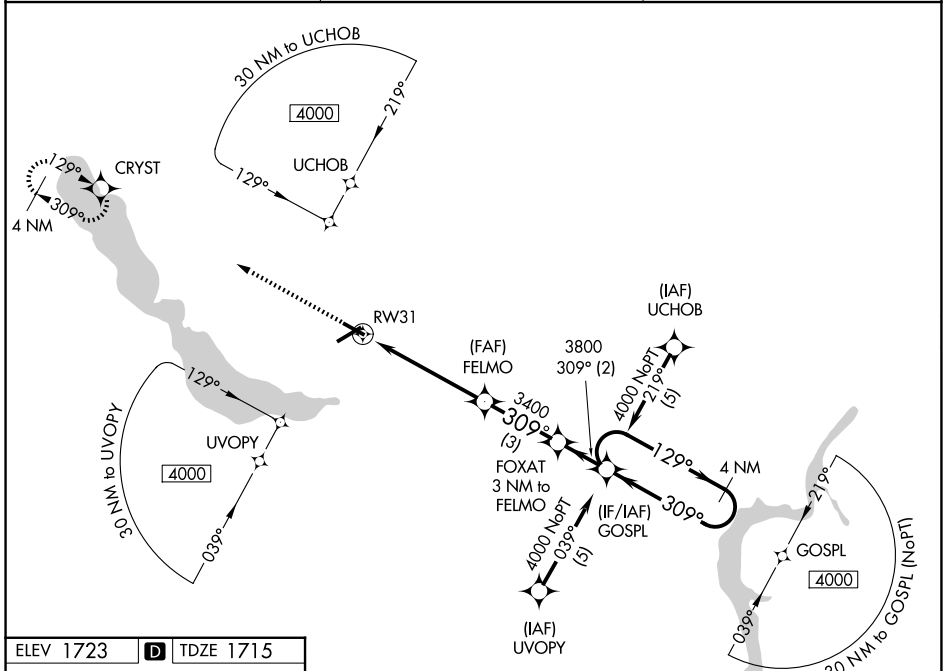
CHAUTAUQUA COUNTY/JAMESTOWN (JHW)

RNP APCH-GPS

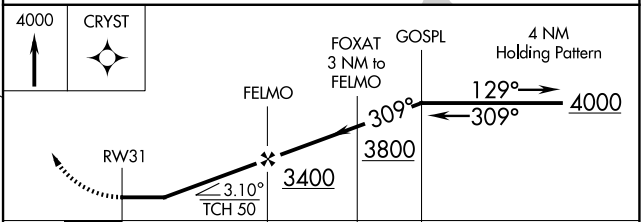
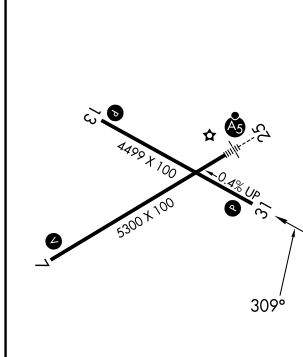
**▽** Rwy 31 Straight-in/Circling and Circling to Rwy 13 NA at night.  
When local altimeter setting not received, use Dunkirk altimeter setting;  
**▲** NA increase all MDAs 200 feet and visibility LNAV Cats C/D ¾ SM, Circling Cat C ½ SM and Circling Cat D ¾ SM. Helicopter visibility reduction below 1 SM NA.

MISSED APPROACH: Climb to 4000 direct CRYST WP and hold.

AWOS-3PT <b>118.425</b>	BUFFALO APP CON * <b>126.05</b>	UNICOM <b>122.975</b> (CTAF) <b>0</b>
----------------------------	------------------------------------	--



ELEV 1723	<b>D</b>	TDZE 1715
-----------	----------	-----------



CATEGORY	A	B	C	D
LNAV MDA	2200-1	485 (500-1)	2200-1½ 485 (500-1½)	2200-1½ 485 (500-1½)
CIRCLING	2200-1	477 (500-1)	2260-1½ 537 (600-1½)	2340-2 617 (700-2)

- REIL Rwy 31 **0**
- MIRL Rwy 13-31 **0**
- HIRL Rwy 7-25 **0**

NE-2, 14 MAY 2026 to 11 JUN 2026

NE-2, 14 MAY 2026 to 11 JUN 2026