

JACKSONVILLE, NORTH CAROLINA

RNAV (GPS) RWY 1

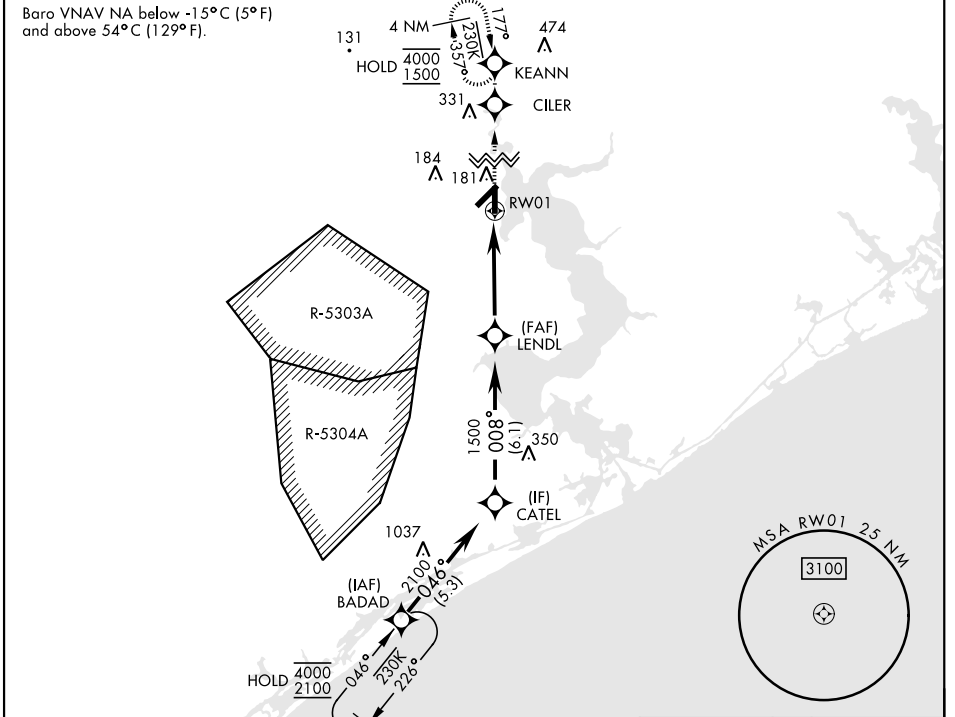
APCH CRS	Rwy ldg	4789
008°	THRE	24
	Arprt Elev	26

[USN] NEW RIVER MCAS (MCCUTCHEON FLD) (KNCA)

RNP APCH	SALSF 	MISSED APPROACH: Climb to 1500 direct CILER, 008° track to KEANN and hold.
RADAR required		

*When ALS inop, increase vis to 7/8 mile.
**When ALS inop, increase vis CAT AB to 1 mile, CAT CD to 1 1/8 miles.

ATIS ★ 288.325	CHERRY POINT APP CON 119.35 377.175	TOWER ★ 134.95 (CTAF) 0★ 360.2	GND CON 121.8 254.275	ASR/PAR
--------------------------	---	--	---------------------------------	---------

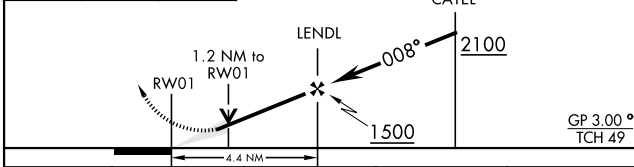


SE-2, 14 MAY 2026 to 11 JUN 2026

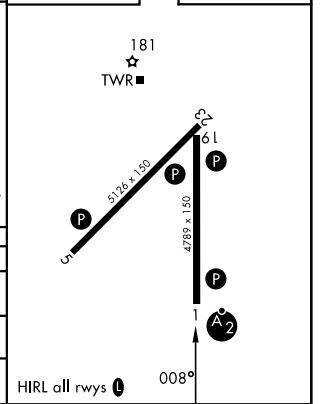
SE-2, 14 MAY 2026 to 11 JUN 2026

EMERG SAFE ALT 100 NM 3400

1500	CILER	KEANN	VGSI and descent angles not coincident (VGSI Angle 3.00/TCH 46)



ELEV	26	THRE	24
------	----	------	----



CATEGORY	A	B	C	D
LNVA/VNAV DA *	311-3/4 (300-3/4)	322-3/4 (300-3/4)	330-3/4 (400-3/4)	341-3/4 (400-3/4)
LNVA MDA **	440-3/4	416 (500-3/4)	440-1	416 (500-1)
CIRCLING	500-1	474 (500-1)	700-2 674 (700-2)	700-2 1/4 674 (700-2 1/4)

JACKSONVILLE, NORTH CAROLINA 34° 43'N-77° 26'W NEW RIVER MCAS (MCCUTCHEON FLD) (KNCA)

Amdt 6 10JUL25

RNAV (GPS) RWY 1