

JACKSONVILLE, NORTH CAROLINA

RNAV (GPS) RWY 19

APCH CRS	Rwy Idg	4789
188°	TDZE	23
	Arpt Elev	26

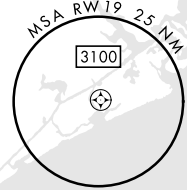
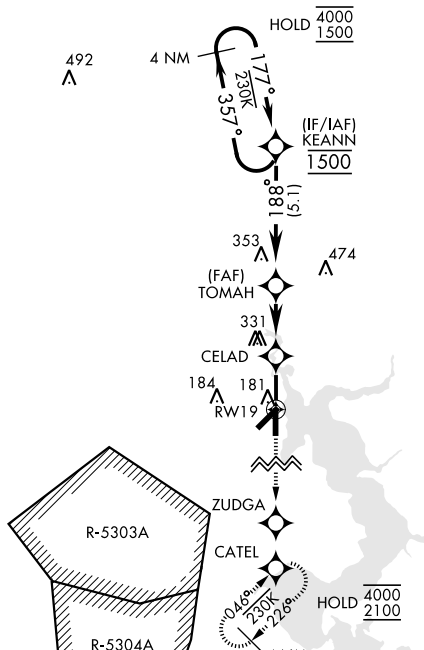
[USN] NEW RIVER MCAS (MCCUTCHEON FLD) (KNCA)

RNP APCH
RADAR required

MISSED APPROACH: Climb to 2100 direct ZUDGA, direct CATEL and hold.

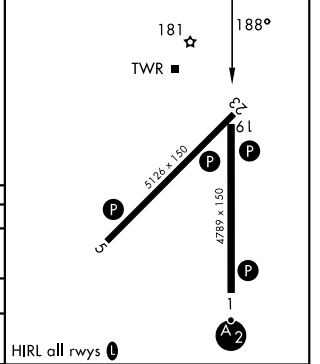
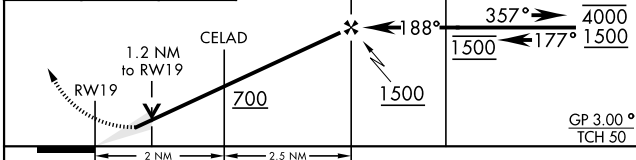
ATIS ★ 288.325	CHERRY POINT APP CON 119.35 377.175	TOWER ★ 134.95(CTAF) 0★ 360.2	GND CON 121.8 254.275	ASR/PAR
--------------------------	---	---	---------------------------------	---------

*154
Baro VNAV NA below -15°C (5°F) and above 54°C (129°F).



2100	ZUDGA	CATEL	VGSI and descent angles not coincident (VGSI Angle 3.00/TCH 41)	4 NM Holding Pattern
------	-------	-------	---	----------------------

ELEV 26	TDZE 23
---------	---------



CATEGORY	A	B	C	D
LNAV/VNAV DA	313-7/8 290 (300-7/8)	323-7/8 300 (300-7/8)	331-7/8 308 (400-7/8)	342-7/8 319 (400-7/8)
LNAV MDA	440-1	417 (500-1)	440-1 1/8	417 (500-1 1/8)
CIRCLING	500-1	474 (500-1)	700-2 674 (700-2)	700-2 1/4 674 (700-2 1/4)

HIRL all rwy 0

JACKSONVILLE, NORTH CAROLINA
Amdt 6 10JUL25

34° 43' N-77° 26' W NEW RIVER MCAS (MCCUTCHEON FLD) (KNCA)

RNAV (GPS) RWY 19

SE-2, 14 MAY 2026 to 11 JUN 2026

SE-2, 14 MAY 2026 to 11 JUN 2026