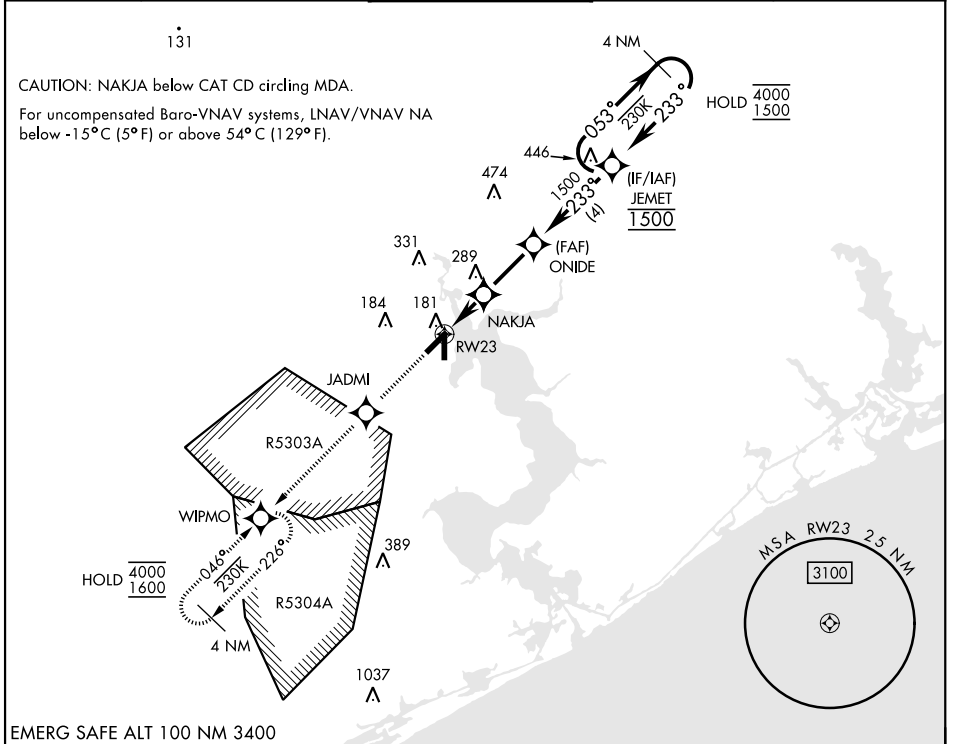


# RNAV (GPS) RWY 23

WAAS Chan <b>92556</b> <b>W23A</b>	APCH CRS <b>233°</b>	Rwy Idg TDZE <b>24</b> Arprt Elev <b>26</b>	[USN]	NEW RIVER MCAS (MCCUTCHEON FLD) (KNCA)
RNP APCH RADAR required		MISSED APPROACH: Climb to 1600 direct JADMI, track 233° to WIPMO and hold.		

ATIS ★ <b>288.325</b>	CHERRY POINT APP CON <b>119.35 377.175</b>	TOWER ★ <b>134.95</b> (CTAF) <b>0★ 360.2</b>	GND CON <b>121.8 254.275</b>	ASR/PAR
--------------------------	---	---	---------------------------------	---------



EMERG SAFE ALT 100 NM 3400

1600 ↑ JADMI WIPMO	VGSIs and descent angles not coincident (VGSIs Angle 3.00/TCH 37)		ELEV 26 TDZE 24
			4 NM Holding Pattern 4000 1500 1500 GP 3.00° TCH 50
CATEGORY LPV DA LNAV/VNAV DA LNAV MDA CIRCLING	A 312-7/8 288 (300-7/8) 440-1 500-1	B 323-7/8 299 (300-7/8) 416 (500-1) 474 (500-1)	C 331-7/8 307 (400-7/8) 440-1 1/8 674 (700-2)
	D 342-7/8 318 (400-7/8) 416 (500-1 1/8) 700-2 1/4 674 (700-2 1/4)		HIRL all rwys

# RNAV (GPS) RWY 23

SE-2, 14 MAY 2026 to 11 JUN 2026

SE-2, 14 MAY 2026 to 11 JUN 2026