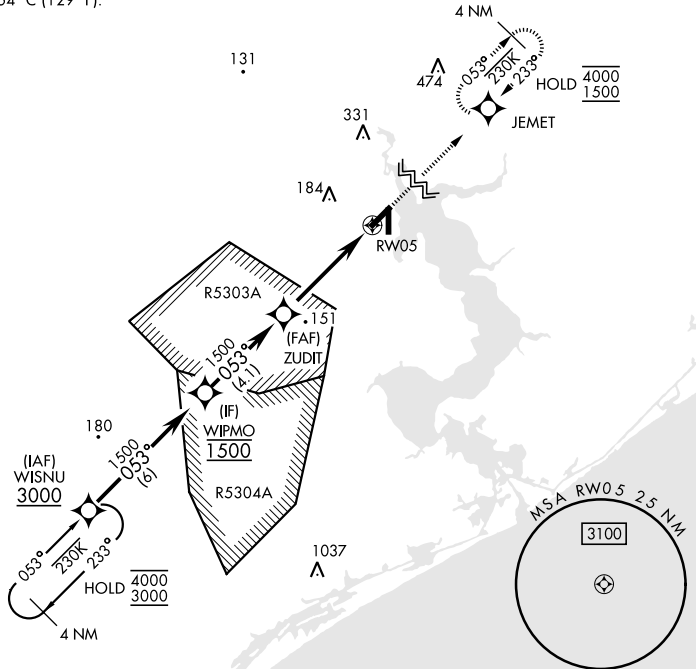


RNAV (GPS) RWY 5

WAAS Chan 77243 W05A	APCH CRS 053°	Rwy Idg 5125 TDZE 26 Arprt Elev 26	[USN]	NEW RIVER MCAS (MCCUTCHEON FLD)	(KNCA)
RNP APCH			MISSED APPROACH: Climb to 1500 direct JEMET and hold.		
RADAR required					

ATIS ★ 288.325	CHERRY POINT APP CON 119.35 377.175	TOWER ★ 134.95 (CTAF) 0★ 360.2	GND CON 121.8 254.275	ASR/PAR
--------------------------	---	--	---------------------------------	---------

For uncompensated Baro-VNAV systems, LNAV/VNAV NA below -15°C (5°F) or above 54°C (129°F).



EMERG SAFE ALT 100 NM 3400

VGSi and descent angles not coincident (VGSi Angle 3.00/TCH 37)					ELEV	26	TDZE	26
GP 3.00° TCH 50								
CATEGORY	A	B	C	D				
LPV DA	226-¾		200 (200-¾)					
LNAV/VNAV DA	308-7/8 282 (300-7/8)	319-7/8 293 (300-7/8)	327-7/8 301 (400-7/8)	338-7/8 312 (400-7/8)				
LNAV MDA	440-1	414 (500-1)	440-1 1/8	414 (500-1 1/8)				
CIRCLING	500-1	474 (500-1)	700-2 674 (700-2)	700-2 1/4 674 (700-2 1/4)				
					HIRL all rwy's 0			

RNAV (GPS) RWY 5

SE-2, 14 MAY 2026 to 11 JUN 2026

SE-2, 14 MAY 2026 to 11 JUN 2026