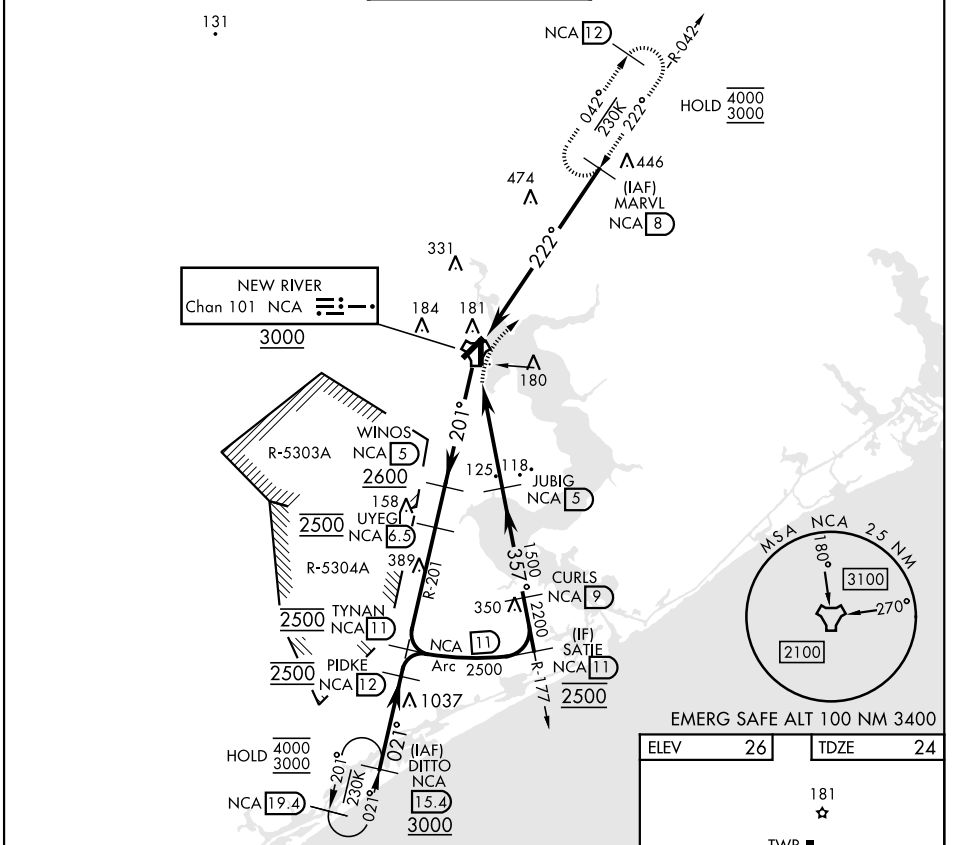


TACAN RWY 1

TACAN NCA Chan 101	APCH CRS 357°	Rwy ldg TDZE Arpt Elev	4789 24 26
RADAR required		SALSF	
* When ALS inop, increase vis CAT AB to 1 mile, CAT CD to 1½ miles.			

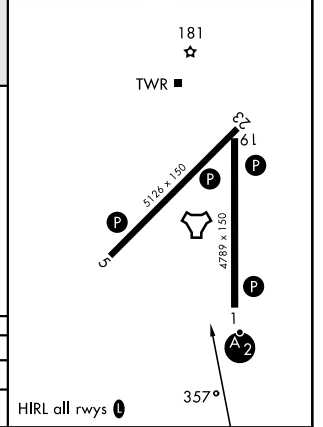
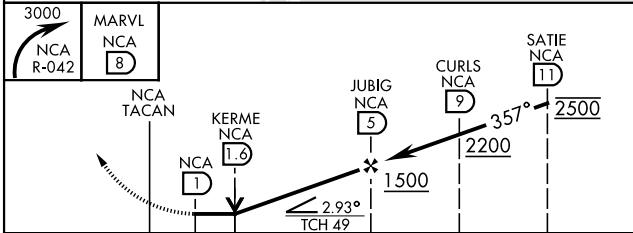
[USN] NEW RIVER MCAS (MCCUTCHEON FLD) (KNCA)

ATIS ★ 288.325	CHERRY POINT APP CON 119.35 377.175	TOWER ★ 134.95 (CTAF) 0★ 360.2	GND CON 121.8 254.275	ASR/PAR
--------------------------	---	--	---------------------------------	---------



EMERG SAFE ALT 100 NM 3400

ELEV	26	TDZE	24
------	----	------	----



CATEGORY	A	B	C	D
S-1*	440-¾	416 (500-¾)	440-1	416 (500-1)
CIRCLING	500-1	474 (500-1)	700-2 674 (700-2)	700-2¼ 674 (700-2¼)

TACAN RWY 1

SE-2, 14 MAY 2026 to 11 JUN 2026

SE-2, 14 MAY 2026 to 11 JUN 2026