

TACAN RWY 19

TACAN NCA Chan 101	APCH CRS 199°	Rwy Idg TDZE 23 Arpt Elev 26	[USN] NEW RIVER MCAS (MCCUTCHEON FLD) (KNCA)
-----------------------	------------------	--	--

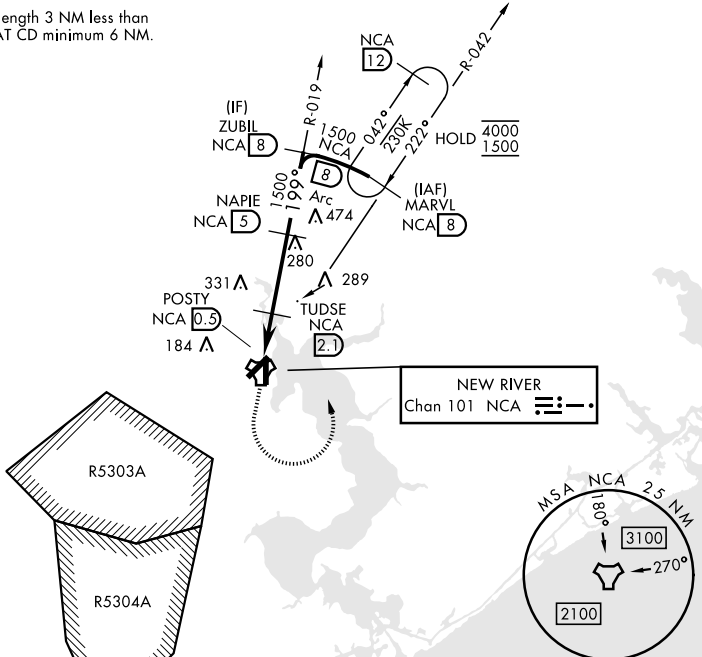
RADAR required

MISSED APPROACH: Climbing left turn to 1500 intercept NCA TACAN R-042 direct MARVL (R-042/8 DME) and hold.

ATIS ★ 288.325	CHERRY POINT APP CON 119.35 377.175	TOWER ★ 134.95 (CTAF) 0★ 360.2	GND CON 121.8 254.275	ASR/PAR
-------------------	--	-----------------------------------	--------------------------	---------

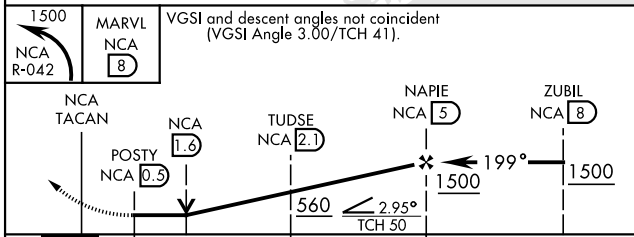
135

CAUTION: Intmd segment length 3 NM less than CAT AB minimum 5 NM; CAT CD minimum 6 NM.

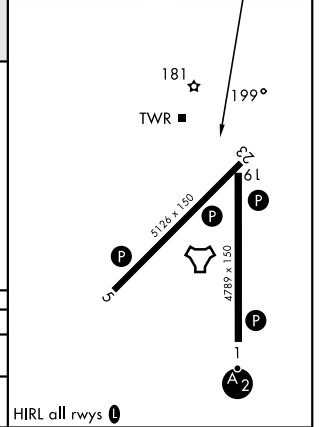


NEW RIVER
Chan 101 NCA

EMERG SAFE ALT 100 NM 3400



ELEV	26	TDZE	23
------	----	------	----



CATEGORY	A	B	C	D
S-19	440-1 417 (500-1)		440-1 1/8 417 (500-1 1/8)	
CIRCLING	500-1 474 (500-1)		700-2 674 (700-2)	700-2 1/4 674 (700-2 1/4)

HIRL all rwys 0

TACAN RWY 19

SE-2, 14 MAY 2026 to 11 JUN 2026

SE-2, 14 MAY 2026 to 11 JUN 2026