

TACAN RWY 23

TACAN NCA Chan 101	APCH CRS 222°	Rwy Idg TDZE 24 Arprt Elev 26	[USN] NEW RIVER MCAS (MCCUTCHEON FLD) (KNCA)
------------------------------	-------------------------	---	--

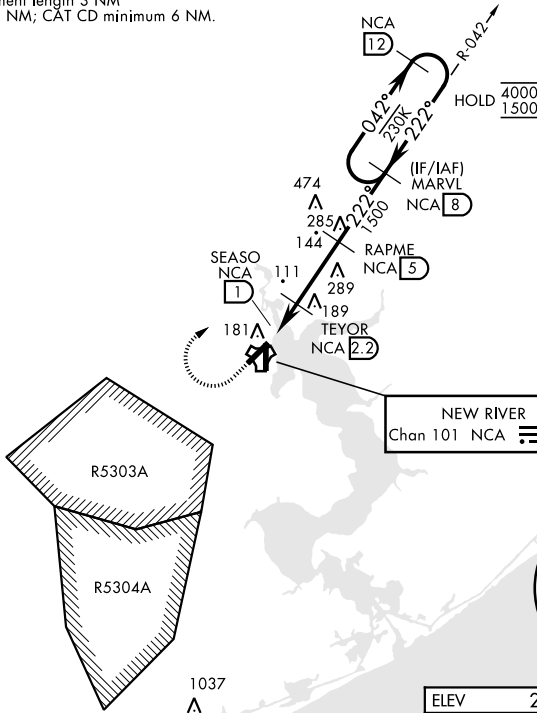
RADAR required

MISSED APPROACH: Climb to 600 then climbing right turn to 1500, intercept NCA TACAN R-042 to MARVL and hold.

ATIS ★ 288.325	CHERRY POINT APP CON 119.35 377.175	TOWER ★ 134.95 (CTAF) 0★ 360.2	GND CON 121.8 254.275	ASR/PAR
--------------------------	---	---	---------------------------------	---------

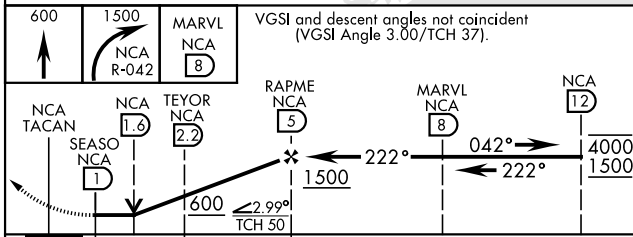
135

CAUTION: Intermediate segment length 3 NM less than CAT AB minimum 5 NM; CAT CD minimum 6 NM.



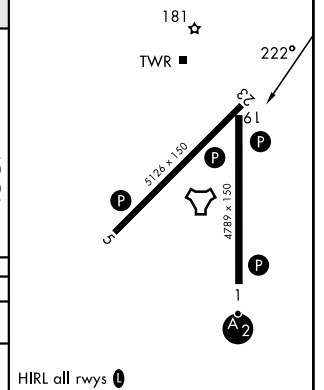
ELEV	26	TDZE	24
------	----	------	----

EMERG SAFE ALT 100 NM 3400



VGSI and descent angles not coincident (VGSI Angle 3.00/TCH 37).

CATEGORY	A		B		C		D	
S-23	440-1	416 (500-1)	440-1	416 (500-1)	700-2	674 (700-2)	700-2	674 (700-2)
CIRCLING	500-1	474 (500-1)	500-1	474 (500-1)	700-2	674 (700-2)	700-2	674 (700-2)



TACAN RWY 23

SE-2, 14 MAY 2026 to 11 JUN 2026

SE-2, 14 MAY 2026 to 11 JUN 2026