

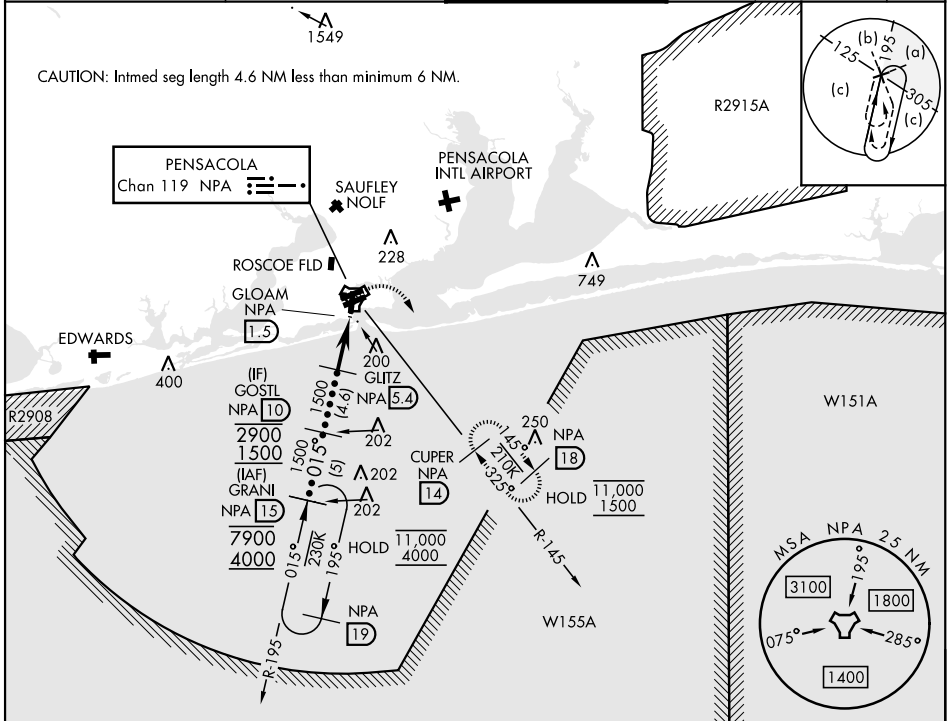
TACAN NPA Chan 119	APCH CRS 015°	Rwy Idg 7136
		TDZE 28
		Arpt Elev 28

[USN] PENSACOLA NAS (FORREST SHERMAN FLD) (KNPA)

RADAR required

MISSED APPROACH: Climbing right turn to 1500 via NPA TACAN R-145 to CUPER and hold.

ATIS 124.35 266.8	PENSACOLA APP CON 120.65 270.8	SHERMAN TOWER 120.7 340.2	GND CON 121.7 336.4	ASR/ PAR
----------------------	-----------------------------------	------------------------------	------------------------	-------------

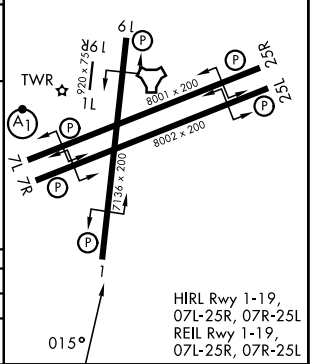
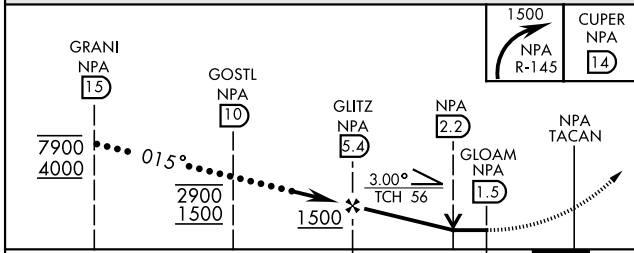


SE-3, 14 MAY 2026 to 11 JUN 2026

SE-3, 14 MAY 2026 to 11 JUN 2026

ELEV	28	TDZE	28
------	----	------	----

EMERG SAFE ALT 100 NM 3100



HIRL Rwy 1-19, 07L-25R, 07R-25L  
REIL Rwy 1-19, 07L-25R, 07R-25L

CATEGORY	C	D	E
S-1	460-1¼	432	(500-1¼)
CIRCLING	540-1½ 512 (600-1½)	600-2 572 (600-2)	640-2¼ 612 (700-2¼)