

# HI-TACAN Z RWY 25L

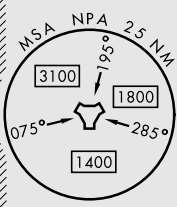
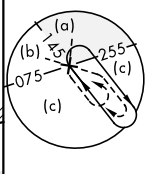
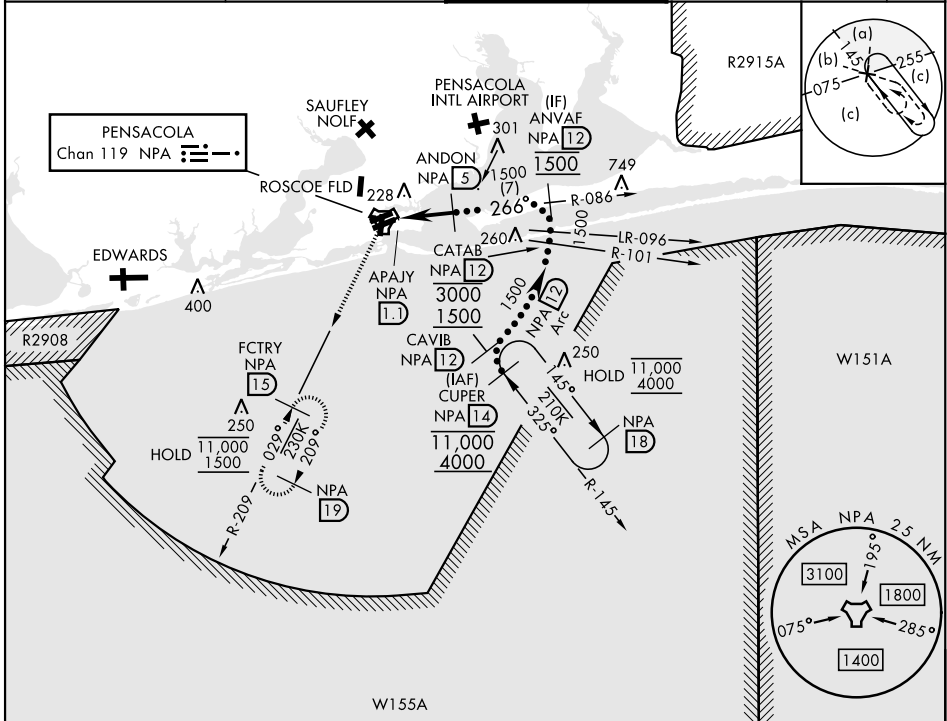
TACAN NPA Chan 119	APCH CRS 266°	Rwy ldg TDZE 8000 22 Arprt Elev 28
-----------------------	------------------	--

[USN] PENSACOLA NAS (FORREST SHERMAN FLD) (KNPA)

RADAR required

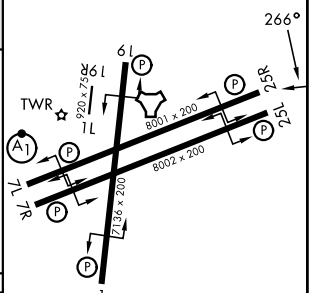
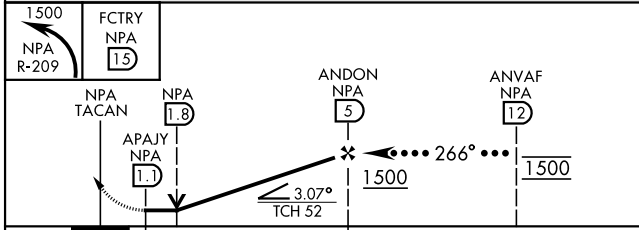
MISSED APPROACH: Climbing left turn to 1500 via NPA TACAN R-209 to FCTRY and hold.

ATIS 124.35 266.8	PENSACOLA APP CON 120.65 270.8	SHERMAN TOWER 120.7 340.2	GND CON 121.7 336.4	ASR/ PAR
----------------------	-----------------------------------	------------------------------	------------------------	-------------



ELEV	28	TDZE	22
------	----	------	----

EMERG SAFE ALT 100 NM 3100



CATEGORY	C	D	E
S-25L		460-1¼	438 (500-1¼)
CIRCLING	540-1½ 512 (600-1½)	600-2 572 (600-2)	640-2¼ 612 (700-2¼)

HIRL Rwy 1-19,  
07L-25R, 07R-25L  
REIL Rwy 1-19,  
07L-25R, 07R-25L

# HI-TACAN Z RWY 25L

SE-3, 14 MAY 2026 to 11 JUN 2026

SE-3, 14 MAY 2026 to 11 JUN 2026