

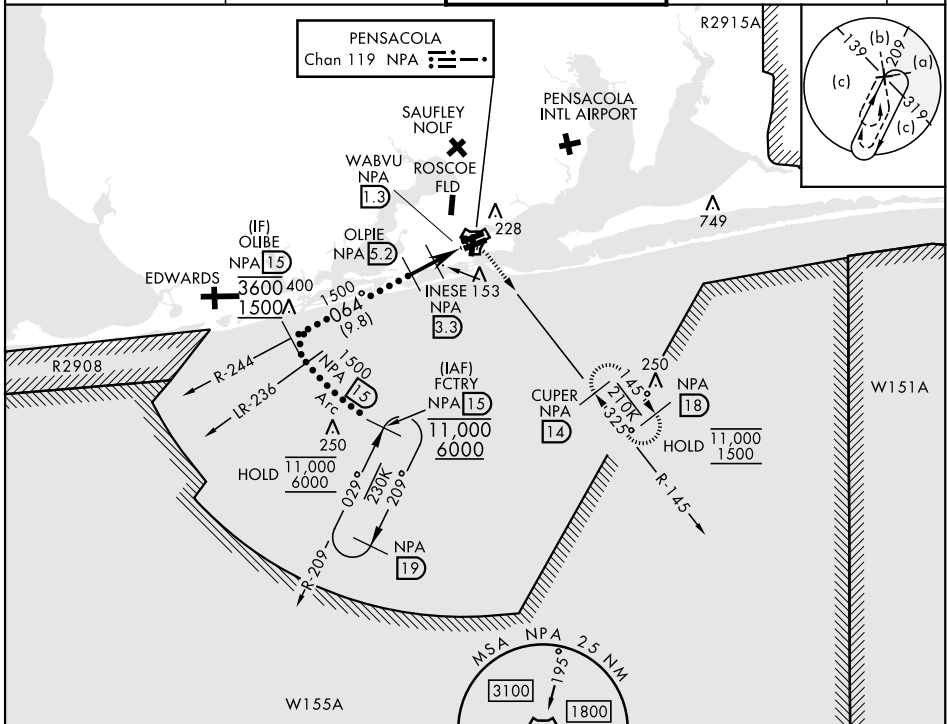
HI-TACAN Z RWY 7L

TACAN NPA Chan 119	APCH CRS 064°	Rwy ldg TDZE Arprt Elev	8001 23 28
-----------------------	------------------	-------------------------------	------------------

[USN] PENSACOLA NAS (FORREST SHERMAN FLD) (KNPA)

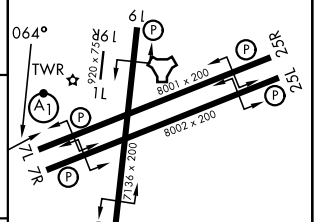
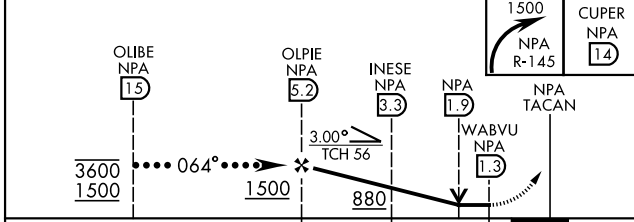
RADAR required * When ALS inop, increase vis to 1/8 miles.	ALSF-1 	MISSED APPROACH: Climbing right turn to 1500 via NPA TACAN R-145 to CUPER and hold.
---	------------	---

ATIS 124.35 266.8	PENSACOLA APP CON 120.65 270.8	SHERMAN TOWER 120.7 340.2	GND CON 121.7 336.4	ASR/ PAR
----------------------	-----------------------------------	------------------------------	------------------------	-------------



ELEV	28	TDZE	23
------	----	------	----

EMERG SAFE ALT 100 NM 3100



CATEGORY	C	D	E
S-7L*		440-3/4	417 (500-3/4)
CIRCLING	540-1 1/2 512 (600-1 1/2)	600-2 572 (600-2)	640-2 1/4 612 (700-2 1/4)

HIRL Rwy 1-19,
07L-25R, 07R-25L
REIL Rwy 1-19,
07L-25R, 07R-25L

PENSACOLA, FLORIDA 30°21'N-87°19'W PENSACOLA NAS (FORREST SHERMAN FLD) (KNPA)

Amtd 1 12JUN25

HI-TACAN Z RWY 7L

SE-3, 14 MAY 2026 to 11 JUN 2026

SE-3, 14 MAY 2026 to 11 JUN 2026