

HI-TACAN Z RWY 7R

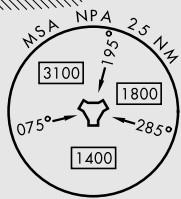
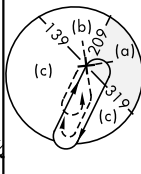
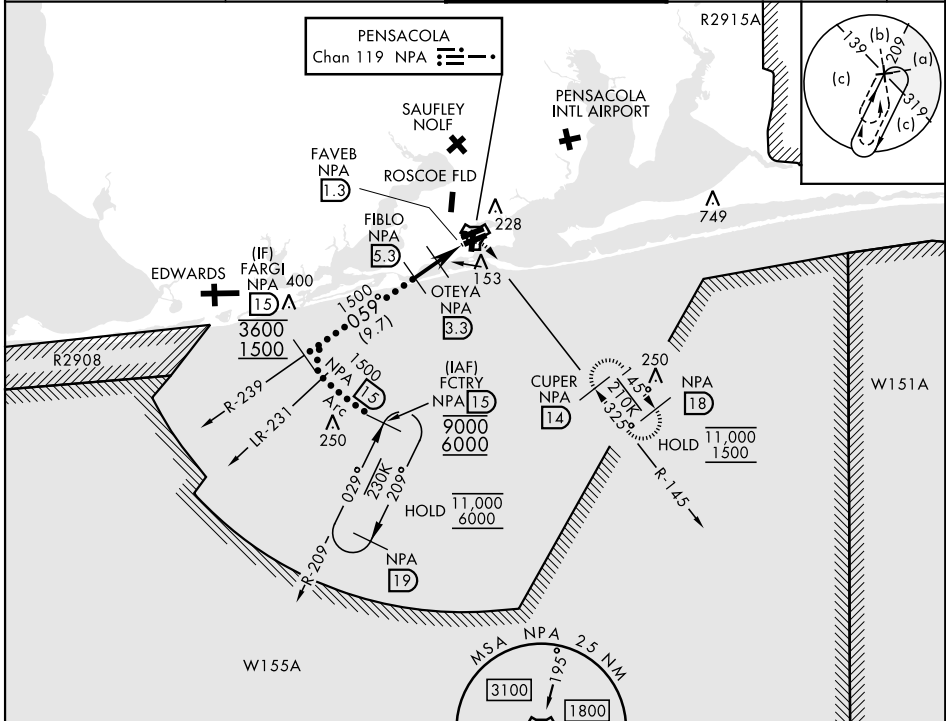
TACAN NPA Chan 119	APCH CRS 059°	Rwy Idg 8000	TDZE 25	Arprt Elev 28
-----------------------	------------------	-----------------	------------	------------------

[USN] PENSACOLA NAS (FORREST SHERMAN FLD) (KNPA)

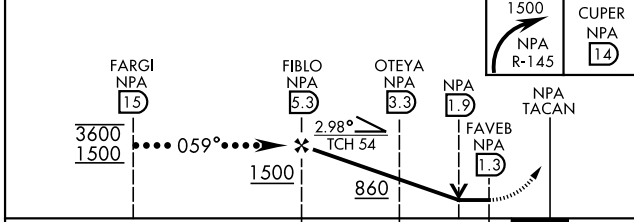
RADAR required

MISSED APPROACH: Climbing right turn to 1500 via NPA TACAN R-145 to CUPER and hold.

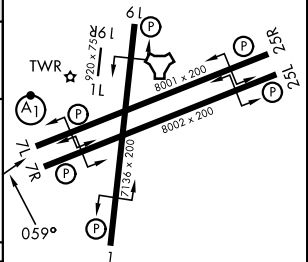
ATIS 124.35 266.8	PENSACOLA APP CON 120.65 270.8	SHERMAN TOWER 120.7 340.2	GND CON 121.7 336.4	ASR/ PAR
----------------------	-----------------------------------	------------------------------	------------------------	-------------



EMERG SAFE ALT 100 NM 3100



ELEV	28	TDZE	25
------	----	------	----



CATEGORY	C	D	E
S-7R		440-1½	415 (500-1½)
CIRCLING	540-1½ 512 (600-1½)	600-2 572 (600-2)	640-2¼ 612 (700-2¼)

HIRL Rwy 1-19,
07L-25R, 07R-25L
REIL Rwy 1-19,
07L-25R, 07R-25L

HI-TACAN Z RWY 7R

SE-3, 14 MAY 2026 to 11 JUN 2026

SE-3, 14 MAY 2026 to 11 JUN 2026