

PENSACOLA, FLORIDA

ILS or RNAV (GPS) Y RWY 7L

LOC/DME I-NPA 109.3 Chan 30	APCH CRS 071°	Rwy Ildg TDZE 23 Arprt Elev 28	8001
---	-------------------------	---	-------------

[USN]

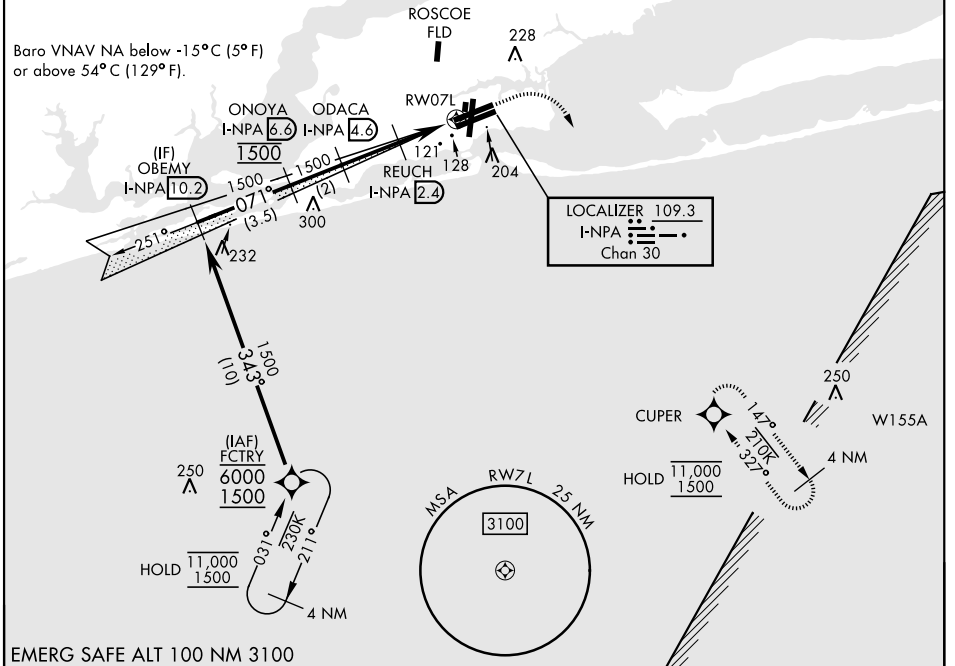
PENSACOLA NAS (FORREST SHERMAN FLD) (KNPA)

RNP APCH - GPS
RADAR required
▼ * When ALS inop, increase vis to ¾ mile.

ALSF-1 	MISSED APPROACH: Climb to 600, then climbing right turn to 1500 direct CUPER and hold.
------------	--

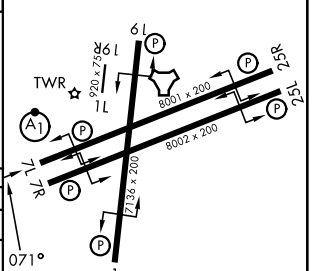
ATIS 124.35 266.8	PENSACOLA APP CON 120.65 270.8	SHERMAN TOWER 120.7 340.2	GND CON 121.7 336.4	ASR/PAR
-----------------------------	--	-------------------------------------	-------------------------------	---------

**When ALS inop, increase CAT ABCD vis to ¾ mile, CAT E vis to 1 mile.
*** When ALS inop, increase vis to 1 mile.



EMERG SAFE ALT 100 NM 3100

	OBEMY I-NPA 10.2	ONOYA I-NPA 6.6	ODACA I-NPA 4.6	RUECH I-NPA 2.4	CUPER	ELEV 28	TDZE 23
	1500	1500	1500	780			
GS 3.00° TCH 53				0.9 NM to RW07L			
CATEGORY	A	B	C	D	E		
S-ILS 7L *	223-½		200	(200-½)			
LNAV/VNAV DA**	274-½	251	(300-½)	283-½	377-5/8		
				260 (300-½)	354 (400-5/8)		
LNAV MDA***	380-½ 357 (400-½)		380-5/8 357 (400-5/8)				
CIRCLING	520-1	492 (500-1)	540-1½	600-2	640-2¼		
			512 (600-1½)	572 (600-2)	612 (700-2¼)		



HIRL Rwy 1-19,
07L-25R, 07R-25L
REIL Rwy 1-19,
07L-25R, 07R-25L

PENSACOLA, FLORIDA
Amdt 6 10JUL25

30°21'N-87°19'W

PENSACOLA NAS (FORREST SHERMAN FLD) (KNPA)

ILS or RNAV (GPS) Y RWY 7L

SE-3, 14 MAY 2026 to 11 JUN 2026

SE-3, 14 MAY 2026 to 11 JUN 2026