

PENSACOLA, FLORIDA

ILS Z or LOC Z RWY 7L

LOC/DME I-NPA 109.3 Chan 30	APCH CRS 071°	Rwy Idg TDZE Arprt Elev 8001 23 28
---	-------------------------	--

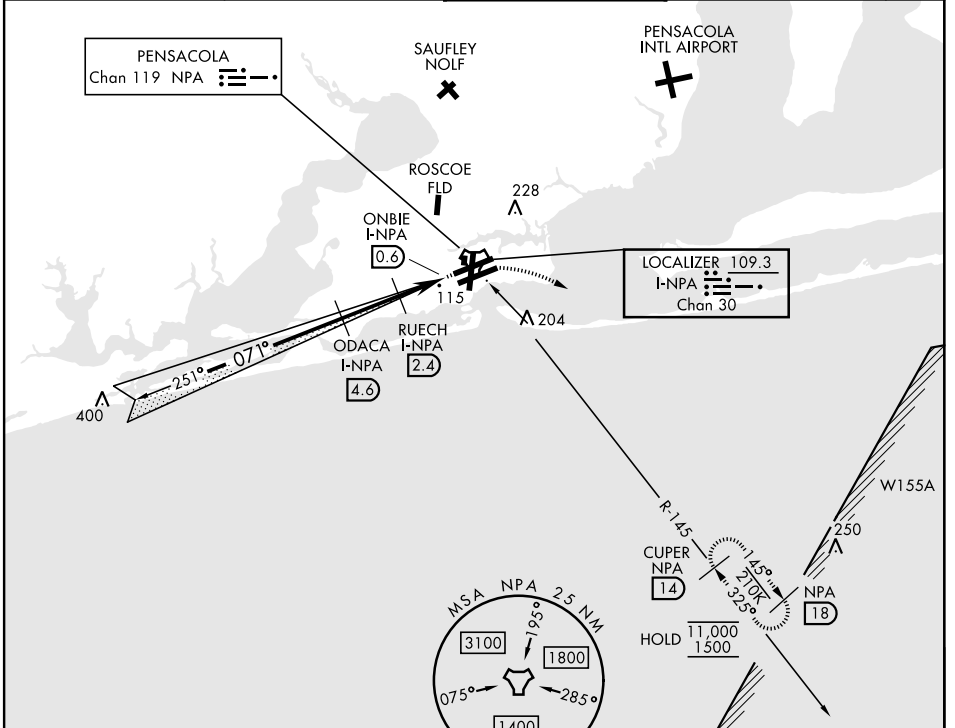
[USN] PENSACOLA NAS (FORREST SHERMAN FLD) (KNPA)

RADAR or TACAN, and DME required.

ALSF-1 MISSED APPROACH: Climb to 600. Then climbing right turn to 1500 via NPA R-145 to CUPER and hold. Aircraft not TACAN equipped: Climb to 600, then climbing right turn to 1500 heading 190°. Expect RADAR vectors.

▼ *When ALS inop, increase vis to ¾ mile.
******When ALS inop, increase vis to 1 mile.

ATIS 124.35 266.8	PENSACOLA APP CON 120.65 270.8	SHERMAN TOWER 120.7 340.2	GND CON 121.7 336.4	ASR/ PAR
-----------------------------	--	-------------------------------------	-------------------------------	-------------

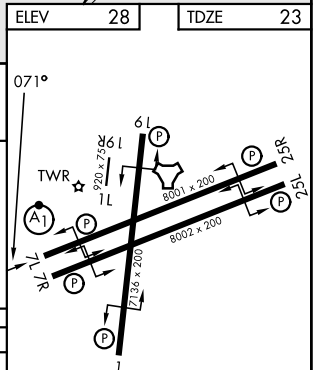
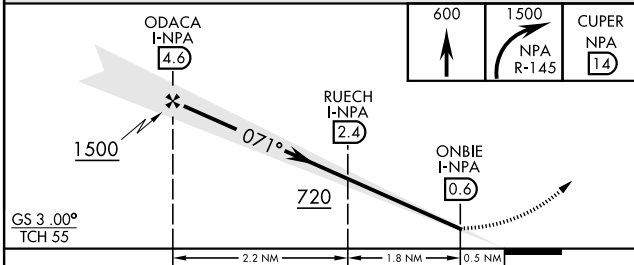


SE-3, 14 MAY 2026 to 11 JUN 2026

SE-3, 14 MAY 2026 to 11 JUN 2026

ELEV	28	TDZE	23
------	----	------	----

EMERG SAFE ALT 100 NM 3100



GS 3.00° TCH 55	2.2 NM					1.8 NM					0.5 NM									
CATEGORY	A		B		C		D		E		A		B		C		D		E	
S-ILS 7L*	223-½					200					(200-½)									
S-LOC 7L**	380-½		357 (400-½)		380-¾		357		(400-¾)		540-1½		600-2		640-2¼		520-1		492 (500-1)	
CIRCLING	520-1		492 (500-1)		512 (600-½)		572 (600-2)		612 (700-2¼)		520-1		492 (500-1)		512 (600-½)		572 (600-2)		612 (700-2¼)	

HIRL Rwy 1-19,
 07L-25R, 07R-25L
 REIL Rwy 1-19,
 07L-25R, 07R-25L

PENSACOLA, FLORIDA

30°21'N-87°19'W

PENSACOLA NAS (FORREST SHERMAN FLD) (KNPA)

Amtd 6 19FEB26

ILS Z or LOC Z RWY 7L