

PENSACOLA, FLORIDA

RNAV (GPS) RWY 19

(USN)

PENSACOLA NAS (FORREST SHERMAN FLD) (KNPA)

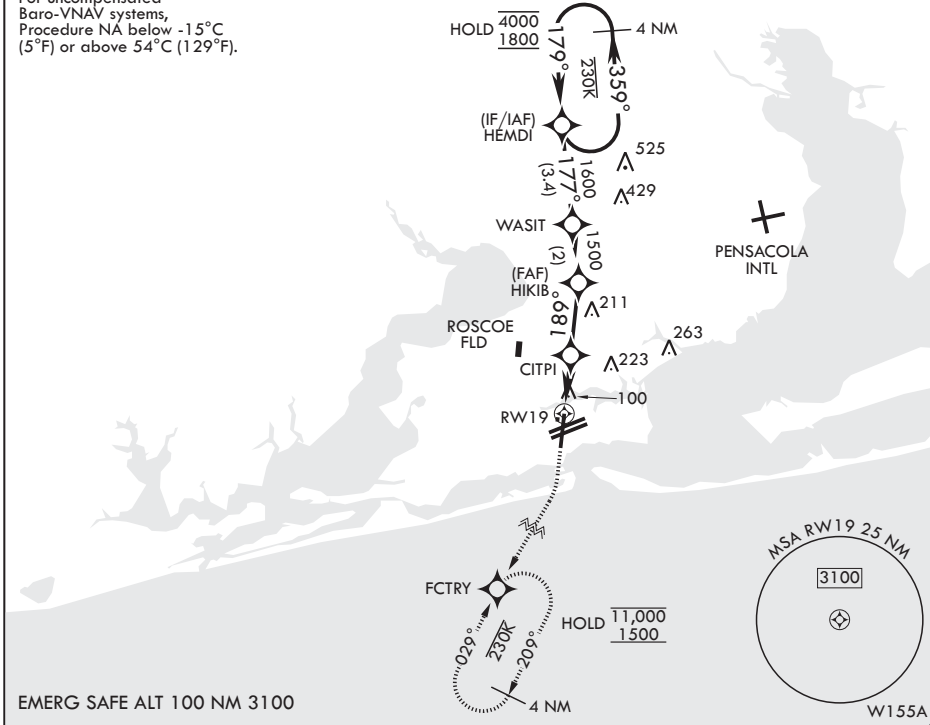
| | | |
|----------|------------|------|
| APCH CRS | Rwy Idg | 7136 |
| 189° | TDZE | 22 |
| | Arprt Elev | 28 |

RNP APCH - GPS
 RADAR required

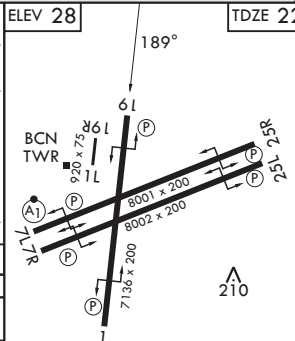
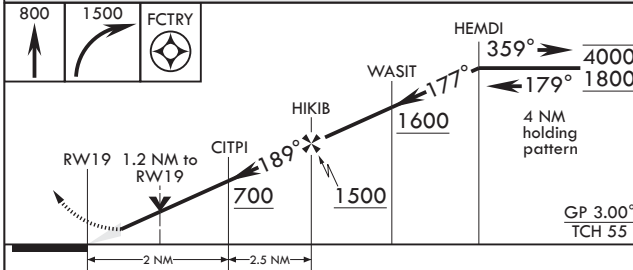
MISSED APPROACH: Climb to 800 then climbing right turn to 1500 direct FCTRY and hold.

| | | | | |
|----------------------|-------------------------|------------------------------|--------------------------------|---------|
| ATIS 124.35 266.8 | APP CON 120.65 270.8 | SHERMAN TOWER 120.7 340.2 | SHERMAN GND CON 121.7 336.4 | ASR/PAR |
|----------------------|-------------------------|------------------------------|--------------------------------|---------|

For uncompensated Baro-VNAV systems, Procedure NA below -15°C (5°F) or above 54°C (129°F).



EMERG SAFE ALT 100 NM 3100



| CATEGORY | A | B | C | D | E |
|--------------|-------|-------------|------------------------|----------------------|------------------------|
| LNAV/VNAV DA | 272-1 | 250 (300-1) | 275-1 253 (300-1) | 296-1 274 (300-1) | 380-1 358 (400-1) |
| LNAV MDA | 440-1 | 418 (500-1) | 440-1½ | 418 (500-1½) | 440-2¼ |
| CIRCLING | 520-1 | 492 (500-1) | 540-1½ 512 (600-1½) | 600-2 572 (600-2) | 640-2¼ 612 (700-2¼) |

HIRL Rwy 1, 7L, 7R, 19, 25L, and 25R
 REIL Rwy 1, 7L, 7R, 19, 25L, and 25R

PENSACOLA, FLORIDA

30°21'N - 87°19'W PENSACOLA NAS (FORREST SHERMAN FLD) (KNPA)

Amdt 6 12JUN25

RNAV (GPS) RWY 19

SE-3, 14 MAY 2026 to 11 JUN 2026

SE-3, 14 MAY 2026 to 11 JUN 2026