

PENSACOLA, FLORIDA

# RNAV (GPS) RWY 25R

(USN)

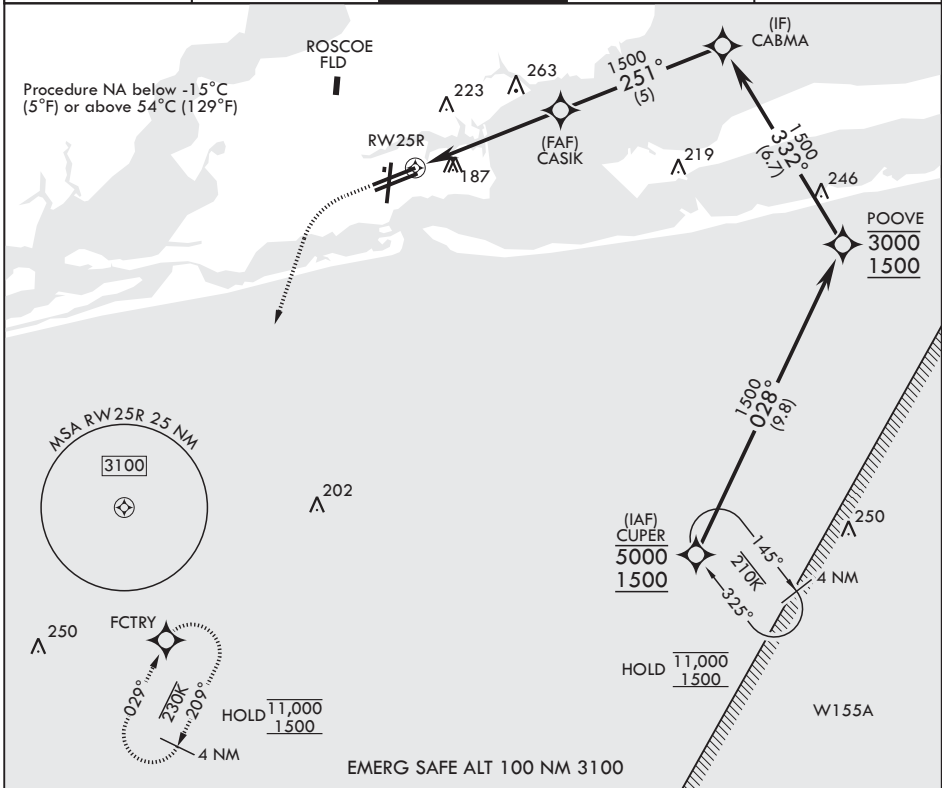
PENSACOLA NAS (FORREST SHERMAN FLD) (KNPA)

APCH CRS	Rwy Idg	8001
251°	TDZE	21
	Arprt Elev	28

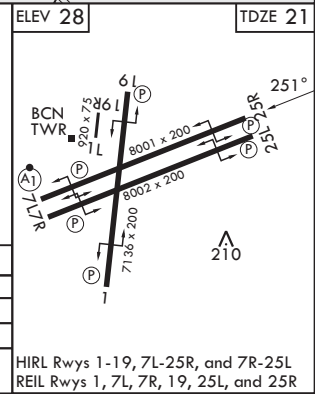
RNP APCH - GPS  
 RADAR required

MISSED APPROACH: Climb to 800 then climbing left turn to 1500 direct FCTRY and hold.

ATIS 124.35 266.8	APP CON 120.65 270.8	SHERMAN TOWER 120.7 340.2	SHERMAN GND CON 121.7 336.4	ASR/PAR
----------------------	-------------------------	------------------------------	--------------------------------	---------



800	1500	FCTRY		
CATEGORY	A	B	C	D
LNAV/VNAV DA	460-1¼	439	(500-1¼)	
LNAV MDA	460-1	439	460-1¼	439
CIRCLING	520-1	492	540-1½ 512 (600-1½)	600-2 572 (600-2)



PENSACOLA, FLORIDA  
 Amdt 8 12JUN25

30°21'N - 87°19'W PENSACOLA NAS (FORREST SHERMAN FLD) (KNPA)

# RNAV (GPS) RWY 25R

SE-3, 14 MAY 2026 to 11 JUN 2026

SE-3, 14 MAY 2026 to 11 JUN 2026