

PENSACOLA, FLORIDA

# RNAV (GPS) RWY 7R

(USN)

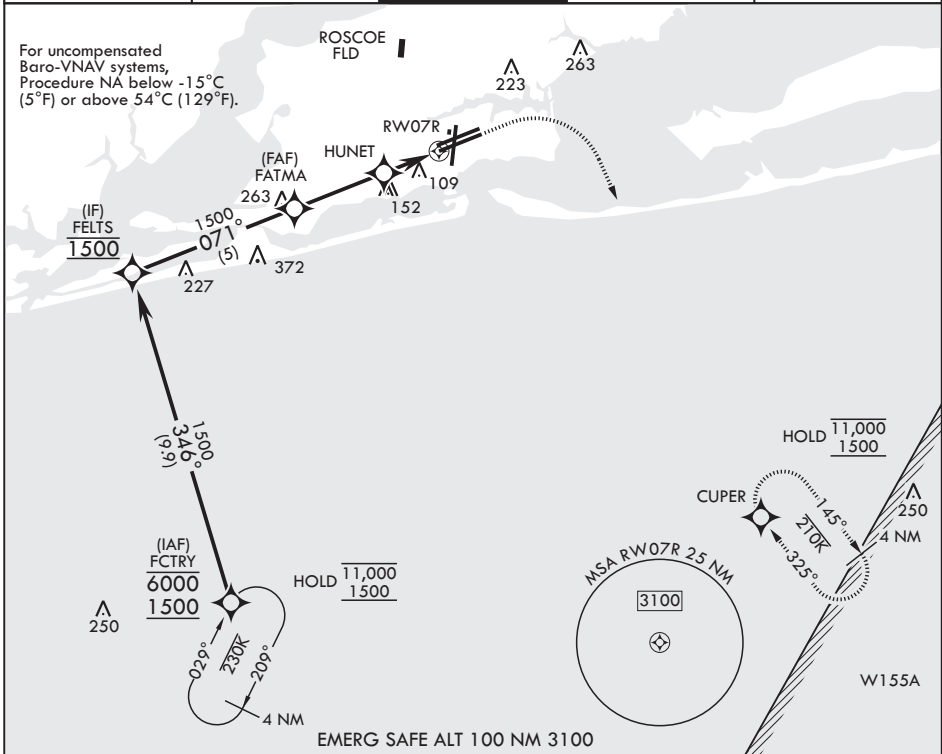
PENSACOLA NAS (FORREST SHERMAN FLD) (KNPA)

APCH CRS	Rwy Idg	8002
071°	TDZE	25
	Arprt Elev	28

RNP APCH - GPS  
 RADAR required

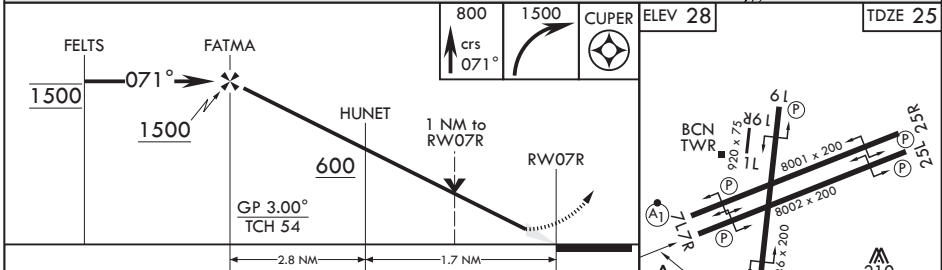
MISSED APPROACH: Climb to 800 then climbing right turn to 1500 direct CUPER and hold.

ATIS 124.35 266.8	APP CON 120.65 270.8	SHERMAN TOWER 120.7 340.2	SHERMAN GND CON 121.7 336.4	ASR/PAR
----------------------	-------------------------	------------------------------	--------------------------------	---------

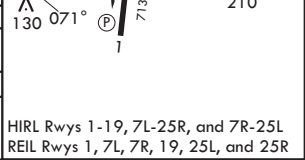


SE-3, 14 MAY 2026 to 11 JUN 2026

SE-3, 14 MAY 2026 to 11 JUN 2026



CATEGORY	A	B	C	D	E
LNAV/VNAV DA	275-1	250	(300-1)	279-1 254 (300-1)	377-1 352 (400-1)
LNAV MDA	380-1		355	(400-1)	
CIRCLING	520-1	492 (500-1)	540-1½ 512 (600-1½)	600-2 572 (600-2)	640-2¼ 612 (700-2¼)



PENSACOLA, FLORIDA

30°21'N - 87°19'W PENSACOLA NAS (FORREST SHERMAN FLD) (KNPA)

Amdt 4 12JUN25

# RNAV (GPS) RWY 7R