

PENSACOLA, FLORIDA

TACAN Y RWY 1

TACAN NPA Chan 119	APCH CRS 015°	Rwy Idg 7136	TDZE 28	Arprt Elev 28
-----------------------	------------------	-----------------	------------	------------------

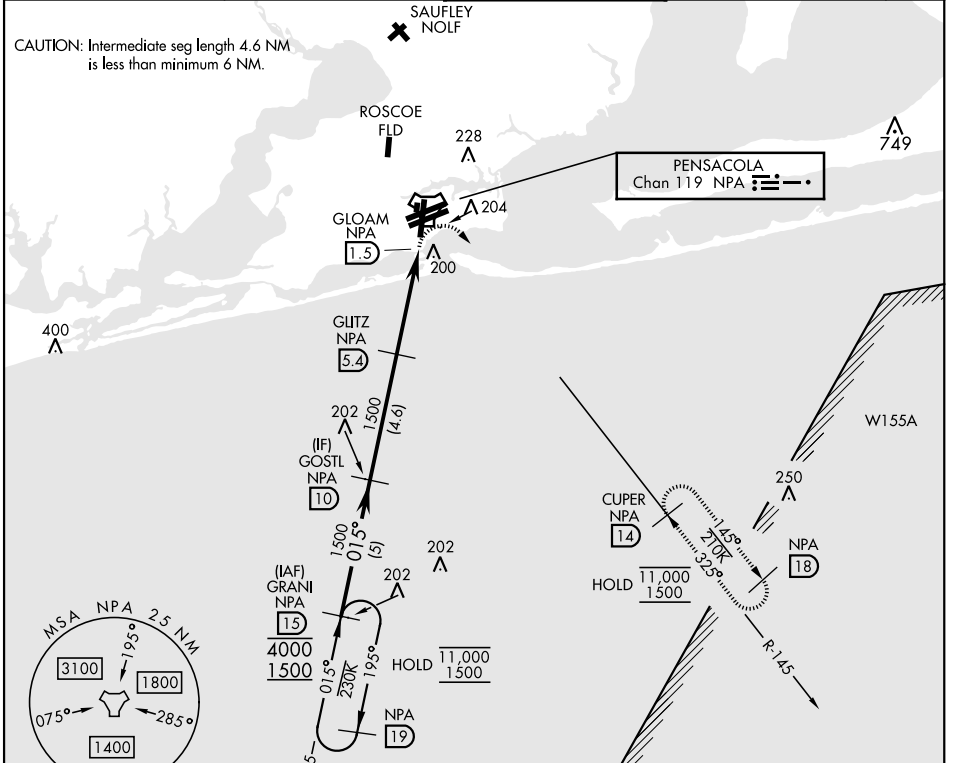
[UNJ]

PENSACOLA NAS (FORREST SHERMAN FLD) (KNPA)

RADAR required
▼

MISSED APPROACH: Climbing right turn to 1500 via NPA TACAN R-145 to CUPER and hold.

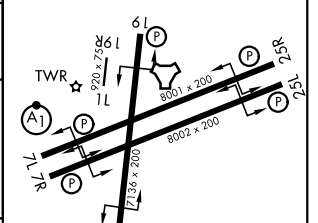
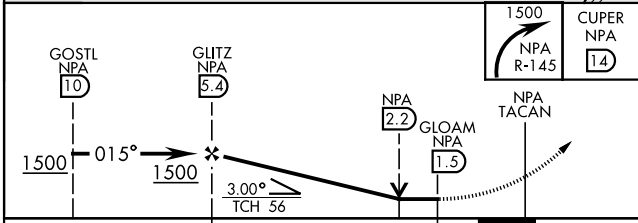
ATIS 124.35 266.8	PENSACOLA APP CON 120.65 270.8	SHERMAN TOWER 120.7 340.2	GND CON 121.7 336.4	ASR/ PAR
----------------------	-----------------------------------	------------------------------	------------------------	-------------



SE-3, 14 MAY 2026 to 11 JUN 2026

SE-3, 14 MAY 2026 to 11 JUN 2026

ELEV	28	TDZE	28
------	----	------	----



CATEGORY	A	B	C	D	E
S-1	460-1	432 (500-1)	460-1½	432 (500-1½)	
CIRCLING	520-1	492 (500-1)	540-1½ 512 (600-1½)	600-2 572 (600-2)	640-2½ 612 (700-2½)

HIRL Rwy 1-19, 07L-25R, 07R-25L
REIL Rwy 1-19, 07L-25R, 07R-25L

PENSACOLA, FLORIDA

30°21'N-87°19'W

PENSACOLA NAS (FORREST SHERMAN FLD) (KNPA)

Amdt 1 12JUN25

TACAN Y RWY 1