

# TACAN Y RWY 19

TACAN NPA Chan <b>119</b>	APCH CRS <b>182°</b>	Rwy Idg TDZE Arprt Elev	<b>7136</b> <b>22</b> <b>28</b>
------------------------------	-------------------------	-------------------------------	---------------------------------------

[USN]

PENSACOLA NAS (FORREST SHERMAN FLD) (KNPA)

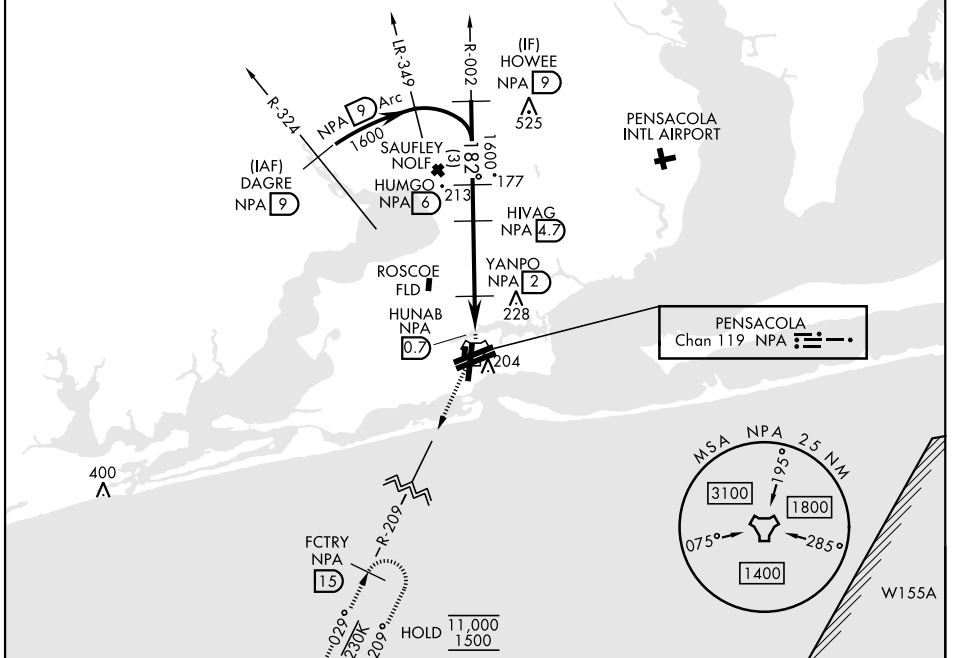
RADAR required  
▼

MISSED APPROACH: Climbing right turn to 1500 via NPA TACAN R-209 to FCTRY and hold.

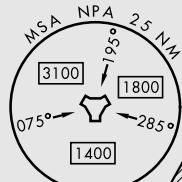
ATIS <b>124.35 266.8</b>	PENSACOLA APP CON <b>120.65 270.8</b>	SHERMAN TOWER <b>120.7 340.2</b>	GND CON <b>121.7 336.4</b>	ASR/ PAR
-----------------------------	--	-------------------------------------	-------------------------------	-------------

CAUTION: Intermediate seg len 4.3 NM is less than minimum 6 NM.

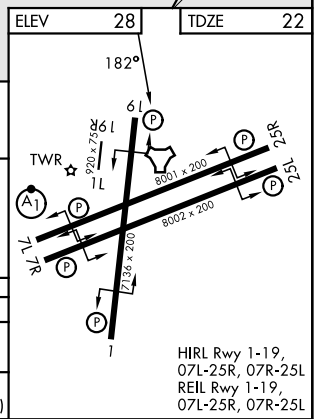
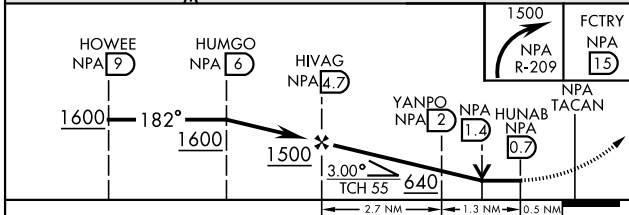
The final apch course is 427' from rwy centerline at 3000' from thld.



PENSACOLA  
Chan 119 NPA



EMERG SAFE ALT 100 NM 3100  
A250



HIRL Rwy 1-19, 07L-25R, 07R-25L  
REIL Rwy 1-19, 07L-25R, 07R-25L

# TACAN Y RWY 19

SE-3, 14 MAY 2026 to 11 JUN 2026

SE-3, 14 MAY 2026 to 11 JUN 2026