

PENSACOLA, FLORIDA

# TACAN Y RWY 7L

TACAN NPA Chan 119	APCH CRS <b>064°</b>	Rwy Idg TDZE Arprt Elev	<b>8001</b> <b>23</b> <b>28</b>
-----------------------	-------------------------	-------------------------------	---------------------------------------

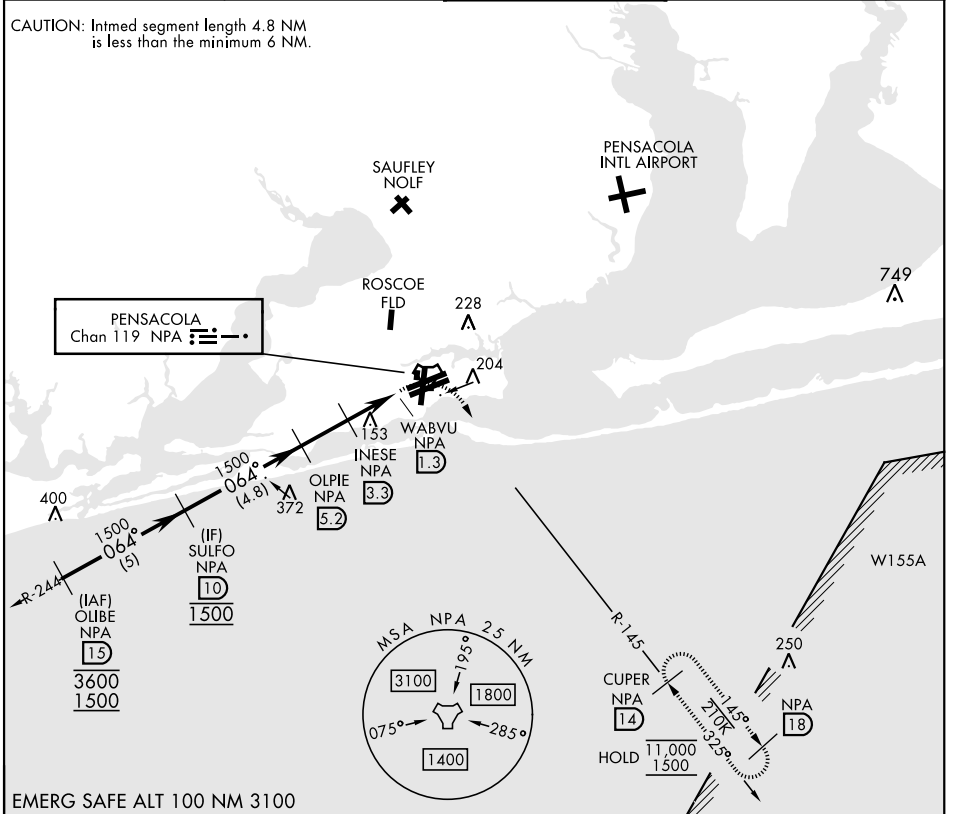
[USN] PENSACOLA NAS (FORREST SHERMAN FLD) (KNPA)

RADAR required  
 ▼ \* When ALS inop, increase CAT AB vis to 1 mile, CAT CDE vis to 1 1/8 miles.

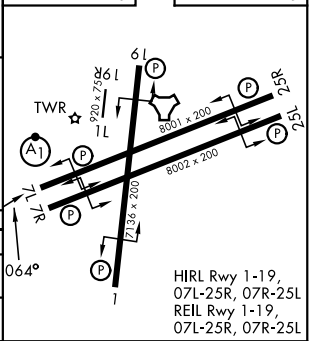
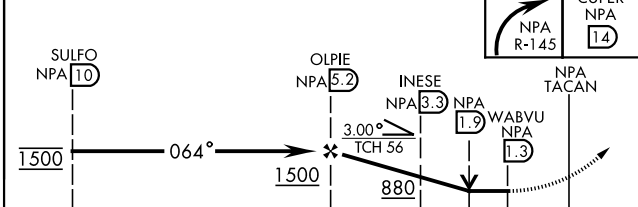


MISSED APPROACH: Climbing right turn to 1500 via NPA TACAN R-145 to CUPER and hold.

ATIS <b>124.35 266.8</b>	PENSACOLA APP CON <b>120.65 270.8</b>	SHERMAN TOWER <b>120.7 340.2</b>	GND CON <b>121.7 336.4</b>	ASR/PAR
-----------------------------	--	-------------------------------------	-------------------------------	---------



EMERG SAFE ALT 100 NM 3100



CATEGORY	A	B	C	D	E
S-7L*	440-1/2	417 (500-1/2)	440-3/4	417 (500-3/4)	
CIRCLING	520-1	492 (500-1)	540-1 1/2 512 (600-1 1/2)	600-2 572 (600-2)	640-2 1/4 612 (700-2 1/4)

PENSACOLA, FLORIDA 30° 21' N-87° 19' W PENSACOLA NAS (FORREST SHERMAN FLD) (KNPA)

Amtd 1 12JUN25

# TACAN Y RWY 7L

SE-3, 14 MAY 2026 to 11 JUN 2026

SE-3, 14 MAY 2026 to 11 JUN 2026