

ILS or LOC RWY 25

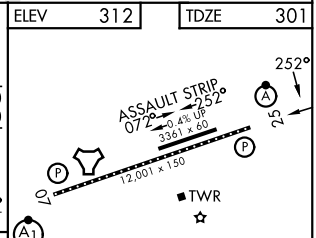
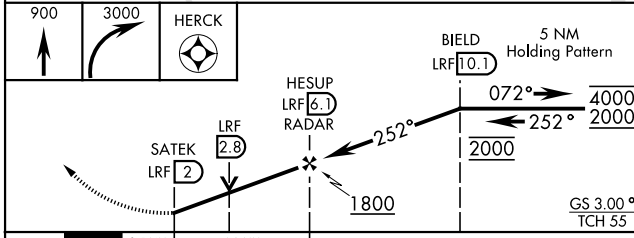
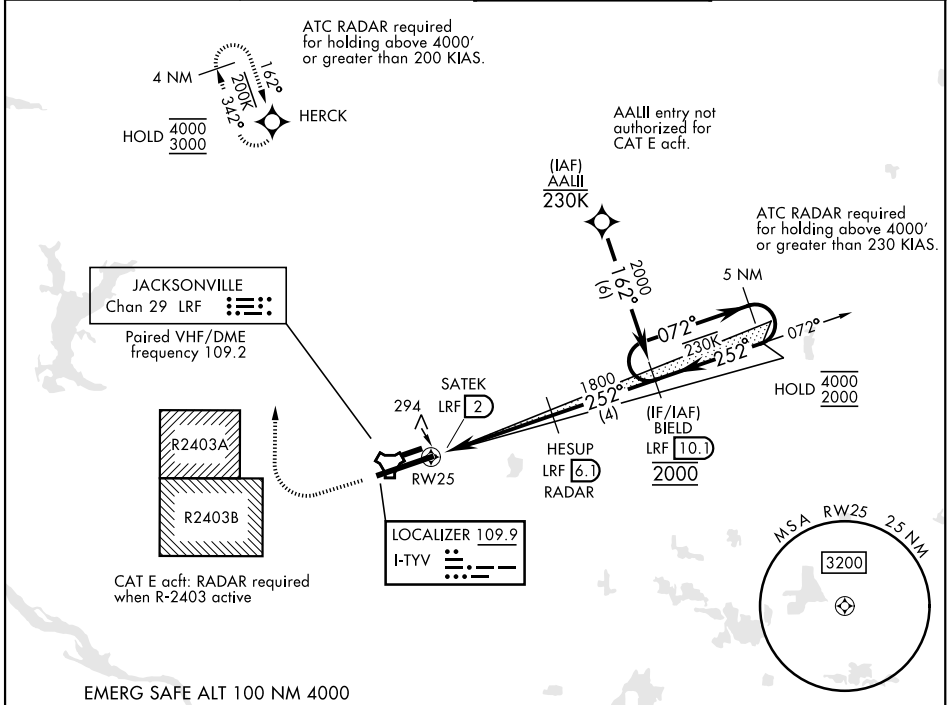
LITTLE ROCK AFB (KLRF)

LOC I-TYV 109.9	APCH CRS 252°	Rwy Idg 12,001
		TDZE 301
		Arprt Elev 312

[USAF]

RNP APCH RNAV1 - GPS or RADAR required.	ALSIF-2 	MISSED APPROACH: Climb to 900 then climbing right turn to 3000 direct HERCK and hold as published.
*When TDZL/CL inop, increase RVR to 24. RVR 18 still authorized with use of FD, AP, or HUD to DA. When ALS inop, increase RVR to 40, vis to ¼ mile. ** When ALS inop, increase CAT AB RVR to 55, vis to 1 mile, CAT CDE vis to 1½ miles. *** Circling not authorized S of Rwy 7-25. Circling not authorized to Assault Strip.		ALTERNATE MISSED APPROACH: Climbing to 3000 fly runway heading until LRF 2 DME, then turn right heading 360°, EFC from ATC.

ATIS ★ 119.175 251.1	APP/DEP CON 119.5 306.2	TOWER 120.6 269.075	GND CON 132.8 275.8
--------------------------------	-----------------------------------	-------------------------------	-------------------------------



CATEGORY	A	B	C	D	E
S-ILS 25*	501/18		200	(200-½)	
S-LOC 25**	760/24 459 (500-½)		760/45 459 (500-7/8)		
CIRCLING***	780-1 468 (500-1)	920-1 608 (700-1)	920-1¾ 608 (700-1¾)	1040-2¼ 728 (800-2¼)	NOT AUTHORIZED

ELEV	312	TDZE	301
HIRL Rwy 07-25	TDZL/RCLS Rwy 25		
FAF to MAP 4.1 NM			
Knots	60	90	120 150 180
Min:Sec	4:06	2:44	2:03 1:38 1:22

ILS or LOC RWY 25

SC-1, 14 MAY 2026 to 11 JUN 2026

SC-1, 14 MAY 2026 to 11 JUN 2026