

JACKSONVILLE, ARKANSAS


RNAV (GPS) RWY 25

WAAS CH 67565 W25A	APCH CRS 252°	Rwy ldg TDZE Arpt Elev	12,001 301 312
---------------------------------	-------------------------	------------------------------	---


(USAF)

LITTLE ROCK AFB (KLRF)

RNP APCH - GPS

ALSF-2  MISSED APPROACH: Climb to 900 then climbing right then turn to 3000 direct HERCK and hold.

RADAR required

 *When ALS inop, increase RVR to 40, vis to 3/4 mile. When TDZL/CL inop, increase RVR to 24.
** When ALS inop, increase CAT AB RVR to 55, vis to 1 mile; CAT CD vis to 1 3/8 miles.

ATIS*
119.175 251.1

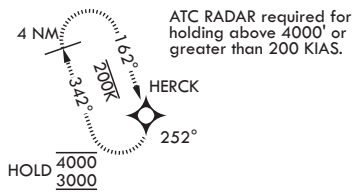
APP CON/DEP CON
119.5 306.2

TOWER
120.6 269.075

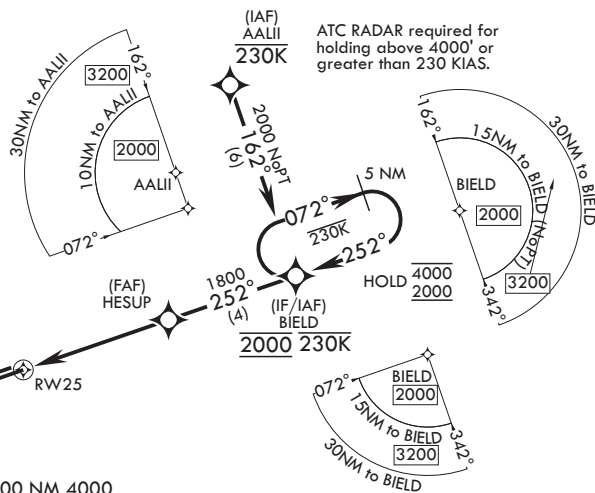
GND CON
132.8 275.8

*** Circling not authorized S of Rwy 7-25.
Circling not authorized to assault strip.

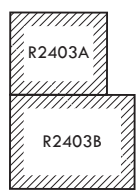
ALTERNATE MISSED APPROACH: Climbing to 3000, fly runway heading until 2 DME then right turn heading 360°, expect RADAR vectors from ATC.



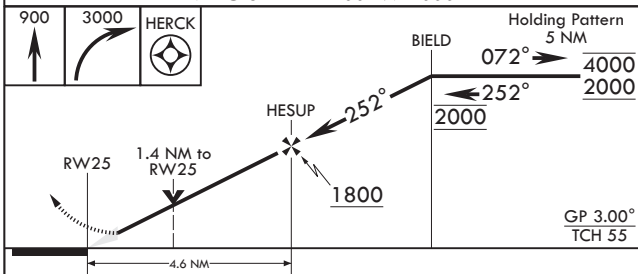
ATC RADAR required for holding above 4000' or greater than 200 KIAS.



ATC RADAR required for holding above 4000' or greater than 230 KIAS.

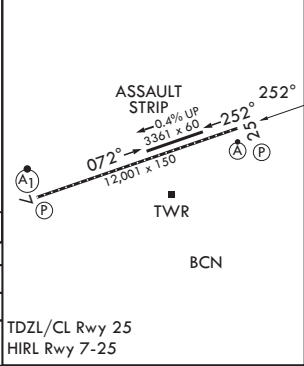


EMERG SAFE ALT 100 NM 4000



ELEV 312 TDZE 301

CATEGORY	A	B	C	D
LPV DA*	501/18		200 (200-1/2)	
LNAV MDA**	780/24	479 (500-1/2)	780/50	479 (500-1)
CIRCLING***	780-1 468 (500-1)	880-1 568 (600-1)	880-1 1/2 568 (600-1 1/2)	1040-2 1/4 728 (800-2 1/4)



JACKSONVILLE, ARKANSAS
Amdt 1 27NOV25

34°55'N - 92°09'W

LITTLE ROCK AFB (KLRF)

RNAV (GPS) RWY 25

SC-1, 14 MAY 2026 to 11 JUN 2026

SC-1, 14 MAY 2026 to 11 JUN 2026