

TACAN RWY 25

TACAN LRF Chan 29	APCH CRS 259°	Rwy ldg TDZE 12,001 301 Arprt Elev 312
--------------------------	----------------------	---

[USAF]

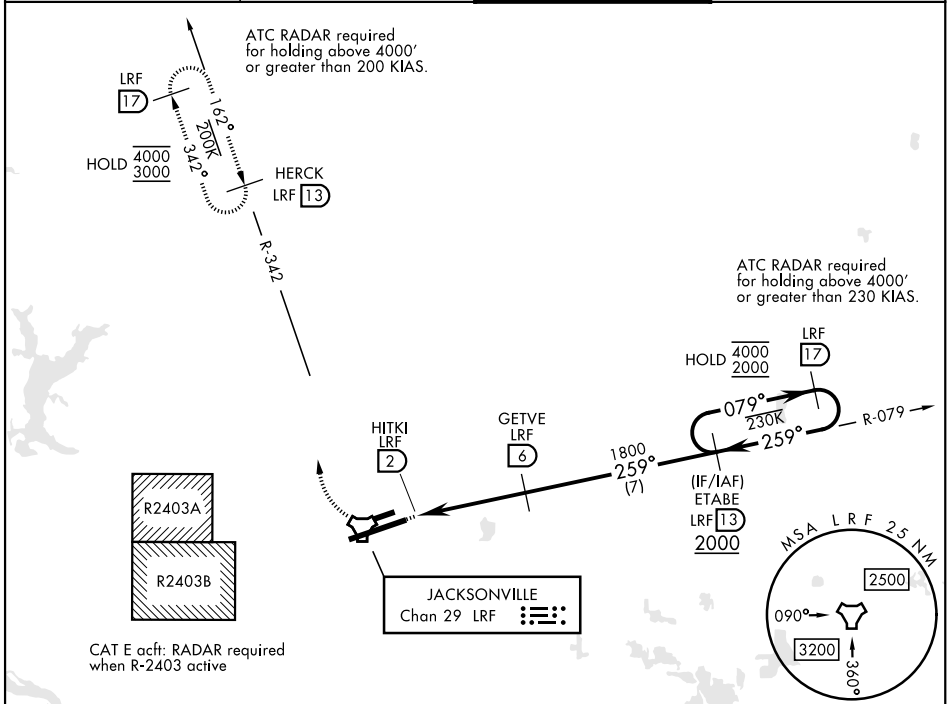
LITTLE ROCK AFB (KLRF)

▽ * When ALS inop, increase CAT AB RVR to 55, vis to 1 mile; CAT CDE vis to 1½ miles.
**** Circling not authorized S of Rwy 07-25.**
 Circling not authorized to Assault Strip.



MISSED APPROACH: Climbing right turn to 3000 to intercept LRF R-342 outbound to HERCK and hold as published.
ALTERNATE MISSED APPROACH: Climbing to 3000, fly runway heading until LRF 2 DME, then turn right heading 360° EFC from ATC.

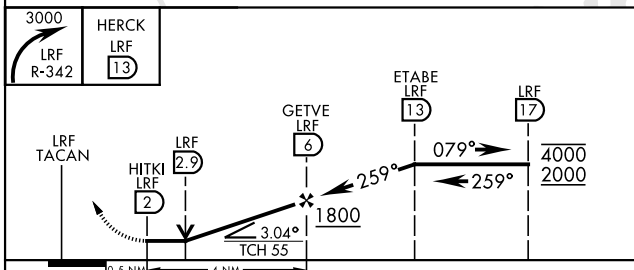
ATIS ★ 119.175 251.1	APP/DEP CON 119.5 306.2	TOWER 120.6 269.075	GND CON 132.8 275.8
--------------------------------	-----------------------------------	-------------------------------	-------------------------------



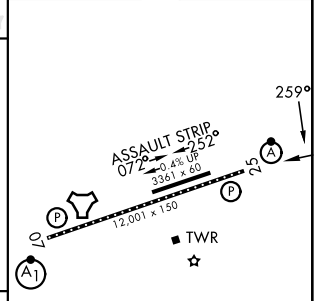
SC-1, 14 MAY 2026 to 11 JUN 2026

SC-1, 14 MAY 2026 to 11 JUN 2026

EMERG SAFE ALT 100 NM 4000



ELEV	312	TDZE	301
------	-----	------	-----



CATEGORY	A	B	C	D	E
S-25 *	800/24	499 (500-½)	800/50	499	(500-1)
CIRCLING **	800-1 488 (500-1)	880-1 568 (600-1)	880-1½ 568 (600-1½)	1040-2¼ 728 (800-2¼)	1040-2½ 728 (800-2½)

HIRL Rwy 07-25
 TDZL/RCLS Rwy 25

TACAN RWY 25