

LOC I-PWA 110.15	APP CRS 175°	Rwy Ldg TDZE Apt Elev	6844 1291 1300
----------------------------	------------------------	-----------------------------	---

ILS or LOC RWY 17L

WILEY POST (PWA)

DME or RADAR required.

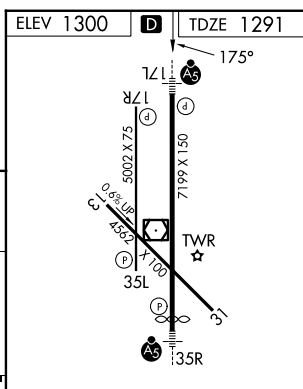
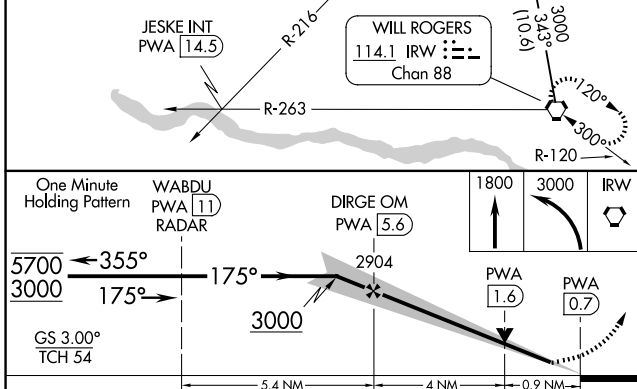
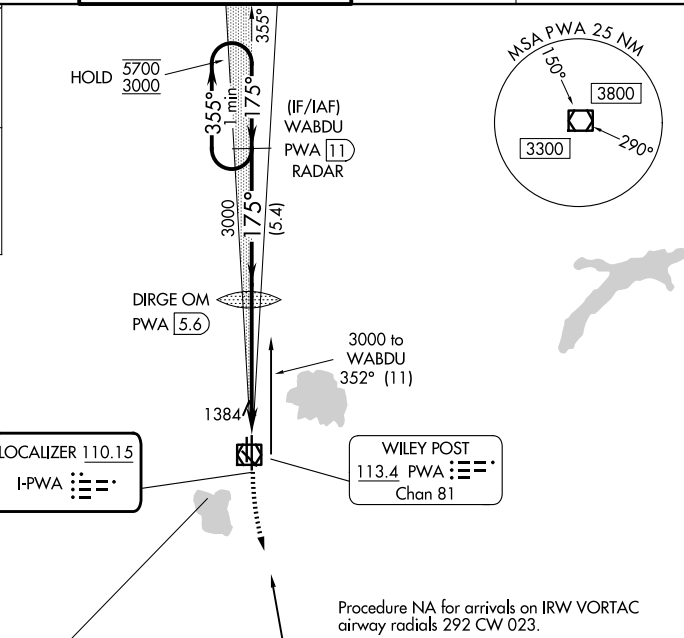
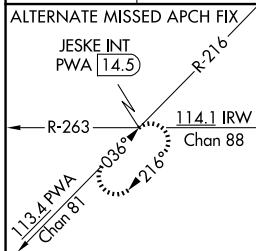


MALSR



MISSED APPROACH: Climb to 1800 then climbing left turn to 3000 direct IRW VORTAC and hold.

ATIS 128.725	OKC CITY APP CON 124.6 266.8	WILEY POST TOWER ★ 126.9 (CTAF) 0 306.9	GND CON 121.7	UNICOM 122.95
------------------------	--	---	-------------------------	-------------------------



CATEGORY	A	B	C	D
S-ILS 17L		1491-1/2	200 (200-1/2)	
S-LOC 17L	1640-1/2	349 (400-1/2)	1640-5/8	349 (400-5/8)
CIRCLING	1780-1	480 (500-1)	1880-1 1/2 580 (600-1 1/2)	1880-2 580 (600-2)

HIRL Rwy 17L-35R				
REIL Rwy 17R and 35L				
MIRL Rwy 13-31 and 17R-35L				
FAF to MAP 4.9 NM				
Knots	60	90	120	150
Min:Sec	4:54	3:16	2:27	1:58

SC-1, 14 MAY 2026 to 11 JUN 2026

SC-1, 14 MAY 2026 to 11 JUN 2026