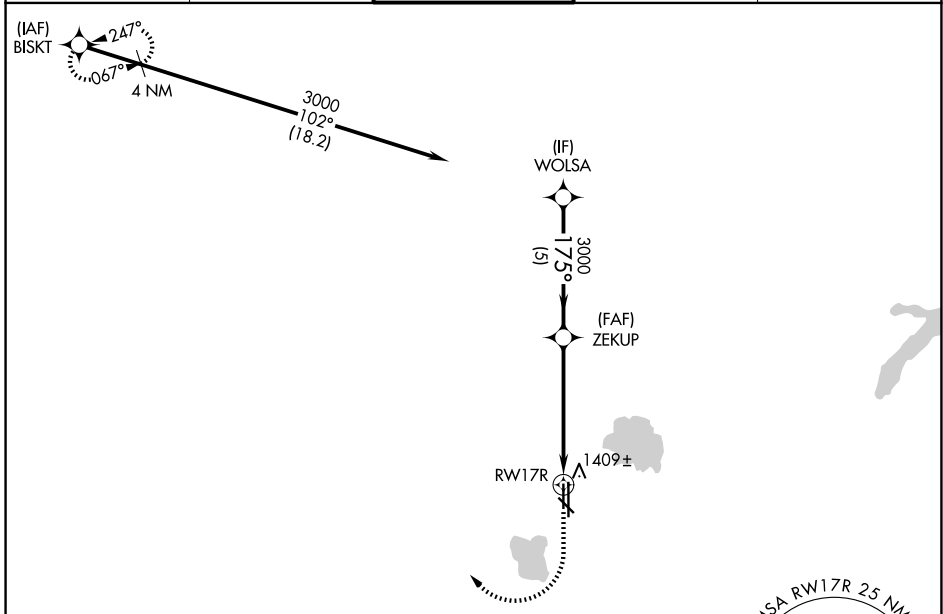


APP CRS	Rwy Ldg	5002
175°	TDZE	1283
	Apt Elev	1300

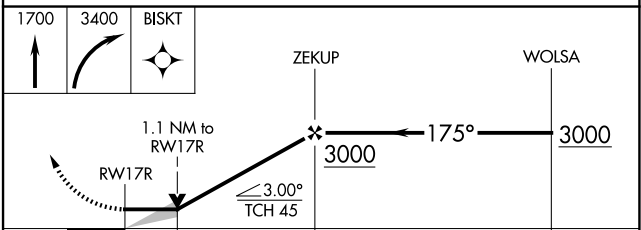
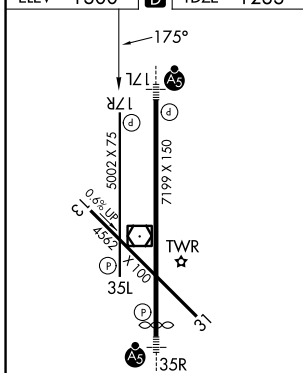
RNAV (GPS) RWY 17R

WILEY POST (PWA)

RNP APCH-GPS.		MISSED APPROACH: Climb to 1700 then climbing right turn to 3400 direct BISKT and hold.		
ATIS	OKE CITY APP CON	WILEY POST TOWER ★	GND CON	UNICOM
128.725	124.6 266.8	126.9 (CTAF) 306.9	121.7	122.95



ELEV	1300	D	TDZE	1283
------	------	----------	------	------



CATEGORY	A	B	C	D
LNAV MDA	1660-1 377 (400-1)			
CIRCLING	1780-1	480 (500-1)	1880-1½ 580 (600-1½)	1880-2 580 (600-2)

REIL Rwy 17R and 35L
 HIRL Rwy 17L-35R
 MIRL Rwy 13-31 and 17R-35L

SC-1, 14 MAY 2026 to 11 JUN 2026

SC-1, 14 MAY 2026 to 11 JUN 2026