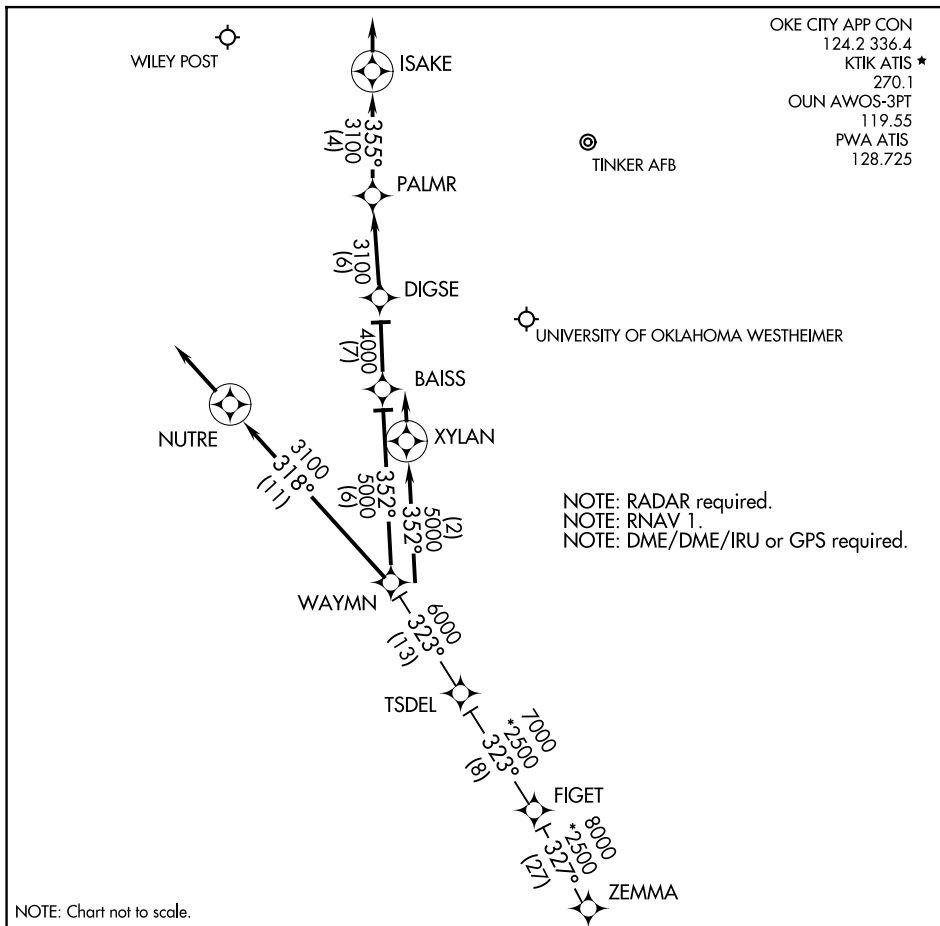


WAYMN ONE ARRIVAL (RNAV)

OKLAHOMA CITY, OKLAHOMA



OKE CITY APP CON
 124.2 336.4
 KTIK ATIS ★
 270.1
 OUN AWOS-3PT
 119.55
 PWA ATIS
 128.725

NOTE: RADAR required.
 NOTE: RNAV 1.
 NOTE: DME/DME/IRU or GPS required.

NOTE: Chart not to scale.

ARRIVAL ROUTE DESCRIPTION

FIGET TRANSITION (FIGET.WAYMN1):

ZEMMA TRANSITION (ZEMMA.WAYMN1):

From TSDel on track 323° to WAYMN.

LANDING OUN: From WAYMN on track 352° to Xylan, then on track 352°. Expect radar vectors to final approach course.

LANDING KTIK: From WAYMN on track 352° to Baiss, then on track 352°. Expect radar vectors to final approach course.

LANDING PWA RWY17L: From WAYMN on track 352° to Baiss, then on track 352° to Digse, then on track 352° to Palmr, then on track 355° to Isaake, then on track 355°. Expect radar vectors to final approach course.

LANDING PWA RW35R: From WAYMN on track 318° to Nutre, then on track 318°. Expect radar vectors to final approach course.

WAYMN ONE ARRIVAL (RNAV)

OKLAHOMA CITY, OKLAHOMA