

LOC/DME I-EDE <b>110.95</b> Chan <b>46(Y)</b>	APP CRS <b>190°</b>	Rwy Ldg <b>6001</b> TDZE <b>19</b> Apt Elev <b>19</b>
---	------------------------	---

# ILS or LOC RWY 19

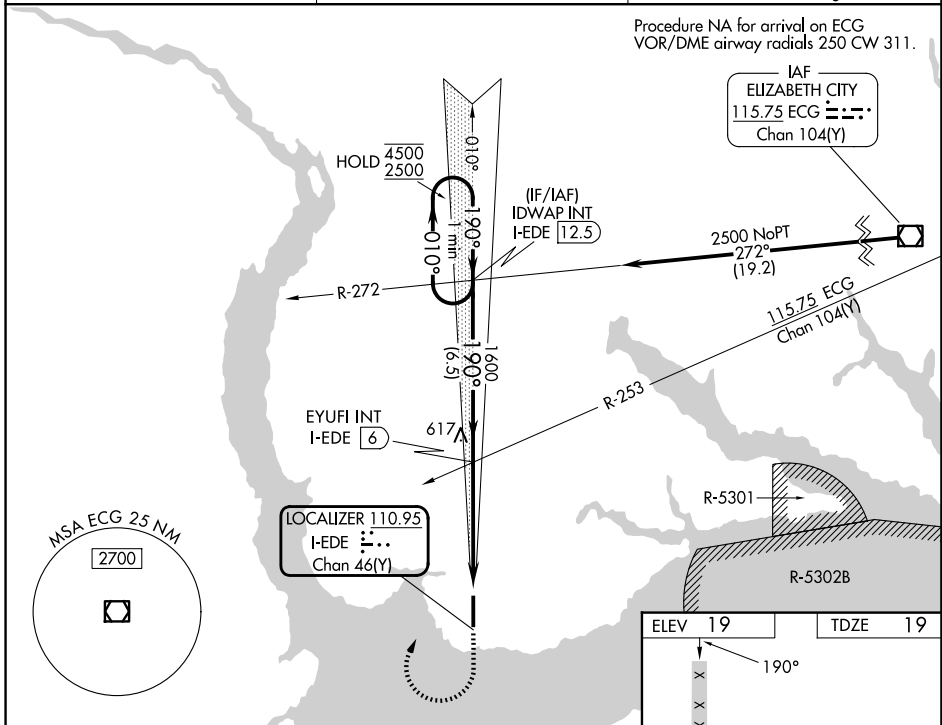
NORTHEASTERN RGNL (E/D/E)

RADAR or DME required for procedure entry.

▼ Rwy 19 helicopter visibility reduction below 3/4 SM NA. VDP NA when using ECG altimeter setting. When local altimeter setting not received, use ECG altimeter setting and increase S-ILS 19 DA to 276 feet; increase all MDAs 60 feet and S-LOC 19 visibility Cat C/D 1/2 SM, and Circling visibility Cat C 1/4 SM.

MISSED APPROACH: Climb to 600 then climbing right turn to 2500 on heading 030° and I-EDE localizer N course to IDWAP INT/I-EDE 12.5 DME and hold.

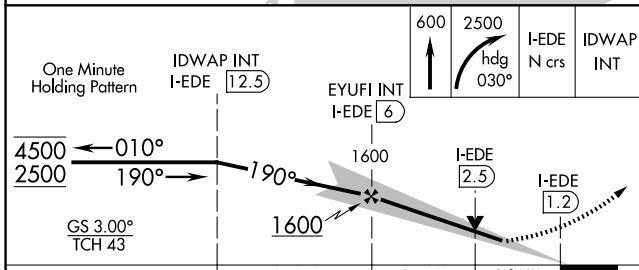
AWOS-3 <b>118.275</b>	WASHINGTON CENTER <b>123.85 279.65</b>	UNICOM <b>123.0 (CTAF) 0</b>
--------------------------	---	---------------------------------



Procedure NA for arrival on ECG VOR/DME airway radials 250 CW 311.

SE-2, 14 MAY 2026 to 11 JUN 2026

SE-2, 14 MAY 2026 to 11 JUN 2026



ELEV 19	TDZE 19
156 MRL Rwy 1-19 REIL Rwys 1 and 19	
FAF to MAP 4.8 NM	
Knots	60 90 120 150 180
Min:Sec	4:48 3:12 2:24 1:55 1:36

CATEGORY	A	B	C	D
S-ILS 19		219-3/4	200 (200-3/4)	
S-LOC 19	500-1	481 (500-1)	500-1 3/8	481 (500-1 3/8)
CIRCLING	520-1	501 (600-1)	560-1 1/2	580-2
			541 (600-1 1/2)	561 (600-2)