

LOC/DME I-RBD 110.75 Chan 44(Y)	APP CRS 309°	Rwy Ldg TDZE Apt Elev 6601 660 661
---	------------------------	--

ILS or LOC RWY 31

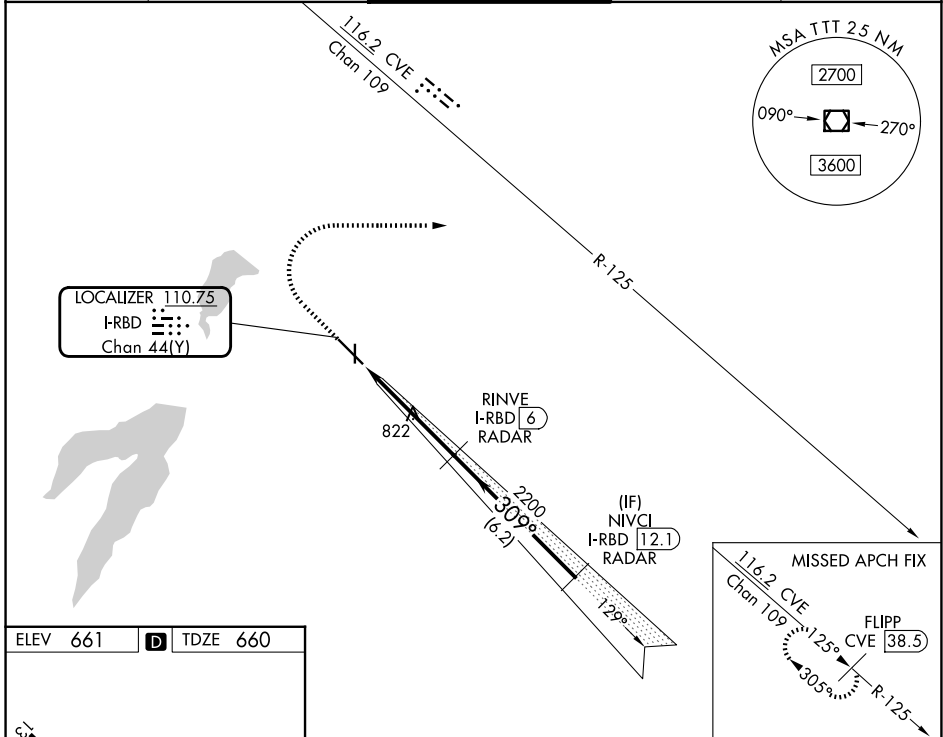
DALLAS EXEC (R.B.D)

RADAR required for procedure entry,
DME or RADAR required for LOC only.



MISSED APPROACH: Climb to 1200 then climbing
right turn to 2500 on heading 090° and CVE
VOR/DME R-125 to FLIPP/CVE 38.5 DME and hold.

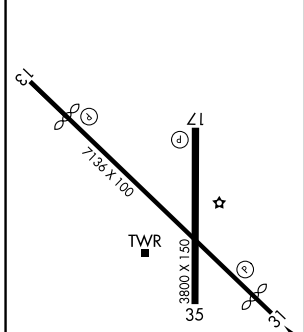
ATIS 126.35	LONE STAR APP CON 125.2 343.65	EXECUTIVE TOWER★ 127.25 (CTAF) 0	GND CON 119.475	UNICOM 122.95
-----------------------	--	--	---------------------------	-------------------------



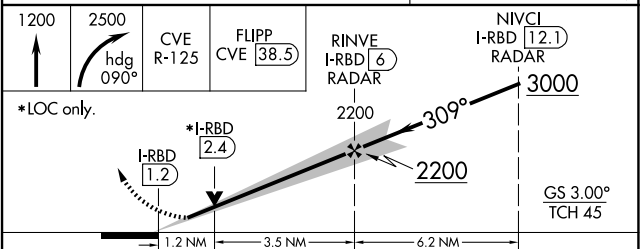
SC-2, 14 MAY 2026 to 11 JUN 2026

SC-2, 14 MAY 2026 to 11 JUN 2026

ELEV 661	D	TDZE 660
----------	----------	----------



REIL Rwy 13, 17, 31 and 35	MIRL Rwy 13-31 and 17-35
FAF to MAP 4.7 NM	
Knots	60 90 120 150 180
Min:Sec	4:42 3:08 2:21 1:53 1:34



CATEGORY	A	B	C	D
S-ILS 31	860-3/4 200 (200-3/4)			
S-LOC 31	1080-1 420 (500-1)	1080-1 1/8 420 (500-1 1/8)		
CIRCLING	1160-1 499 (500-1)	1220-1 559 (600-1)	1340-2 679 (700-2)	1400-2 1/4 739 (800-2 1/4)