

KUSSO THREE DEPARTURE (RNAV)
(KUSSO3.KUSSO) 14MAY26

(KUSSO3.KUSSO) 26134
KUSSO THREE DEPARTURE (RNAV)

AL742 (FAA)

DALLAS EXEC (RBD)
DALLAS, TEXAS

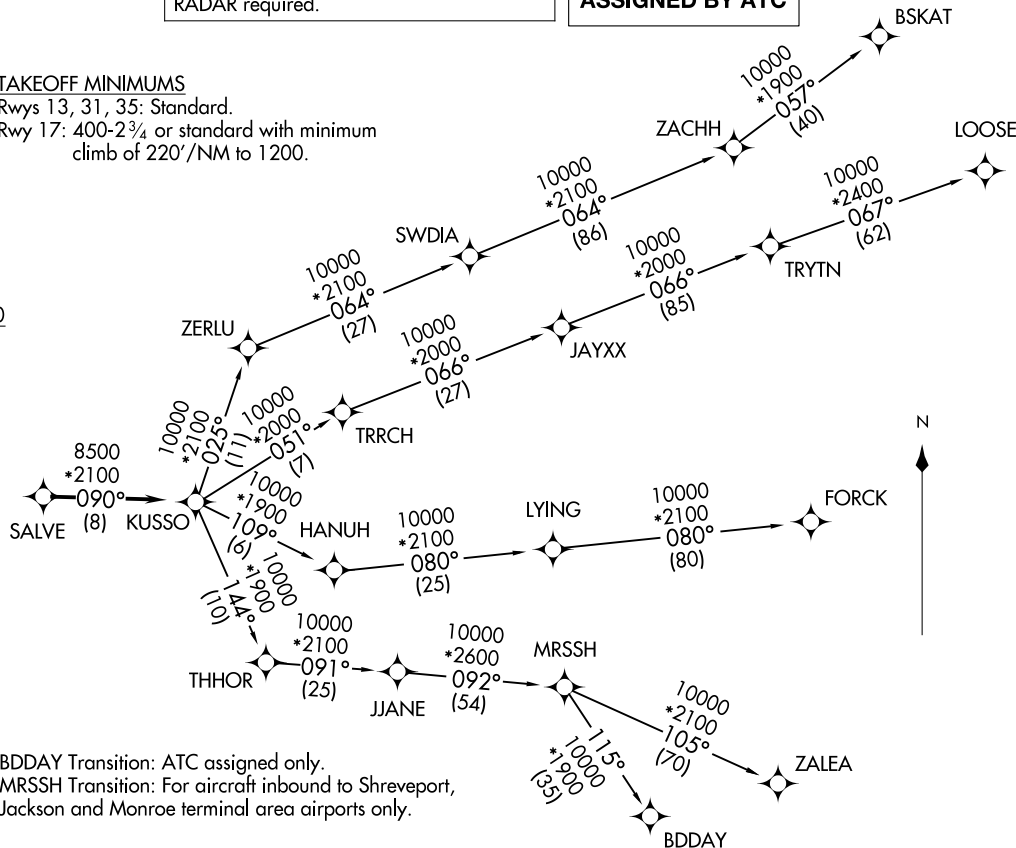
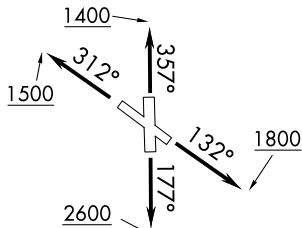
LONE STAR DEP CON
125.2 343.65
ATIS
126.35
CLNC DEL
118.625
GND CON
119.475
EXECUTIVE TOWER ★
127.25 (CTAF)

RNAV 1 - DME/DME/IRU or GPS required.
RADAR required.

**TOP ALTITUDE:
ASSIGNED BY ATC**

TAKEOFF MINIMUMS

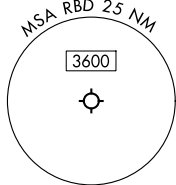
Rwys 13, 31, 35: Standard.
Rwy 17: 400-2¾ or standard with minimum
climb of 220'/NM to 1200.



NOTE: BDDAY Transition: ATC assigned only.
NOTE: MRSSH Transition: For aircraft inbound to Shreveport,
Jackson and Monroe terminal area airports only.

(CONTINUED ON FOLLOWING PAGE)

NOTE: Chart not to scale.



DALLAS, TEXAS
DALLAS EXEC (RBD)

KUSSO THREE DEPARTURE (RNAV)



DEPARTURE ROUTE DESCRIPTION

TAKEOFF RUNWAY 13: Climb on heading 132° to 1800 before turning westbound.

TAKEOFF RUNWAY 17: Climb on heading 177° to 2600 before turning westbound.

TAKEOFF RUNWAY 31: Climb on heading 312° to 1500 before turning southbound.

TAKEOFF RUNWAY 35: Climb on heading 357° to 1400 before turning southbound.

When entering controlled airspace, fly heading assigned by ATC, expect RADAR vectors to SALVE, then on track 090° to KUSSO, then on assigned transition. Maintain ATC assigned altitude, expect filed altitude 10 minutes after departure.

BDDAY TRANSITION (KUSSO3.BDDAY)

BSKAT TRANSITION (KUSSO3.BSKAT)

FORCK TRANSITION (KUSSO3.FORCK)

LOOSE TRANSITION (KUSSO3.LOOSE)

MRSSH TRANSITION (KUSSO3.MRSSH)

ZALEA TRANSITION (KUSSO3.ZALEA)

SC-2, 14 MAY 2026 to 11 JUN 2026

SC-2, 14 MAY 2026 to 11 JUN 2026