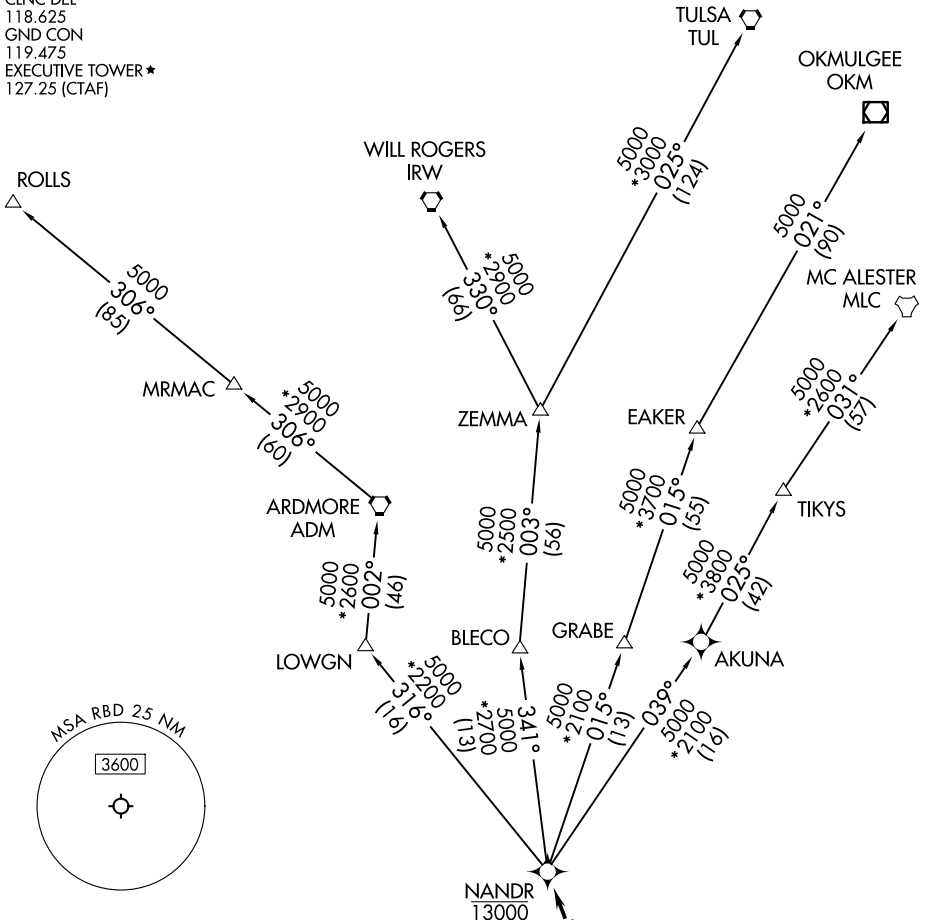


# NANDR FOUR DEPARTURE (RNAV)

LONE STAR DEP CON  
125.2 343.65  
ATIS  
126.35  
CLNC DEL  
118.625  
GND CON  
119.475  
EXECUTIVE TOWER ★  
127.25 (CTAF)

RNAV 1 - DME/DME/IRU or GPS required.  
RADAR required.

**TOP ALTITUDE:  
ASSIGNED BY ATC**



SC-2, 14 MAY 2026 to 11 JUN 2026

SC-2, 14 MAY 2026 to 11 JUN 2026

### TAKEOFF MINIMUMS

Rwys 13, 31, 35: Standard.  
Rwy 17: 400-2¾ or standard with  
minimum climb of 220'/NM to 1200.

NOTE: EAKER Transition: For TUL terminal arrivals only.  
NOTE: TULSA Transition: For all aircraft overflying TUL VORTAC.  
NOTE: Aircraft arriving to the Oklahoma City terminal area,  
file and expect the ZEMMA enroute transition.

NOTE: Chart not to scale.

(CONTINUED ON FOLLOWING PAGE)

# NANDR FOUR DEPARTURE (RNAV)

# NANDR FOUR DEPARTURE (RNAV)



## DEPARTURE ROUTE DESCRIPTION

TAKEOFF RUNWAY 13: Climb on heading 129° to 1800 before turning westbound or as assigned by ATC, thence. . .

TAKEOFF RUNWAY 17: Climb on heading 174° to 2600 before turning westbound or as assigned by ATC, thence. . .

TAKEOFF RUNWAY 31: Climb on heading 309° to 1500 before turning southbound or as assigned by ATC, thence. . .

TAKEOFF RUNWAY 35: Climb on heading 354° to 1400 before turning southbound or as assigned by ATC, thence. . .

. . .expect RADAR vectors to cross CUZNO at or above 3000, then on track 357° to cross NANDR at or below 13000, then on assigned transition. Maintain ATC assigned altitude, expect filed altitude 10 minutes after departure.

EAKER TRANSITION (NANDR4.EAKER)

MC ALESTER TRANSITION (NANDR4.MLC)

OKMULGEE TRANSITION (NANDR4.OKM)

ROLLS TRANSITION (NANDR4.ROLLS)

TULSA TRANSITION (NANDR4.TUL)

WILL ROGERS TRANSITION (NANDR4.IRW)

ZEMMA TRANSITION (NANDR4.ZEMMA)

SC-2, 14 MAY 2026 to 11 JUN 2026

SC-2, 14 MAY 2026 to 11 JUN 2026