

DALLAS, TEXAS

AL-742 (FAA)

26078

WAAS CH 42699 W31A	APP CRS 309°	Rwy Ldg TDZE Apt Elev	6601 660 661
--	------------------------	-----------------------------	---

RNAV (GPS) RWY 31

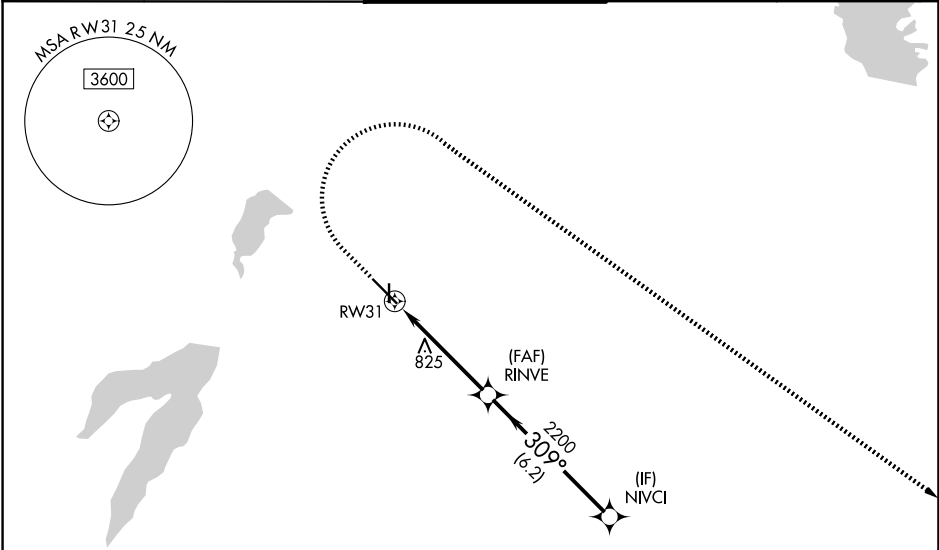
DALLAS EXEC (R.BD)

RNP APCH - GPS.

V For uncompensated Baro-VNAV systems, LNAV/VNAV
A NA below -2°C or above 54°C.

MISSED APPROACH: Climb to 1200 then climbing right turn to 2500 direct FLIPP and hold.

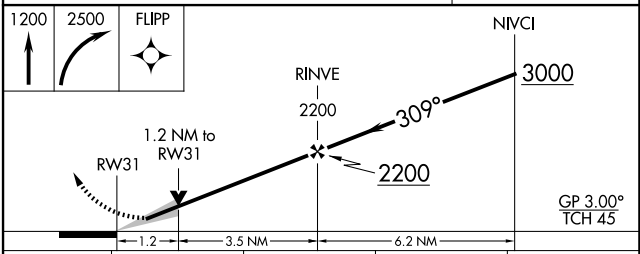
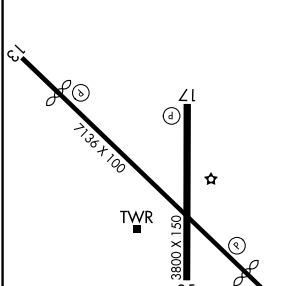
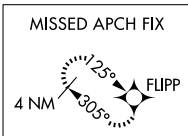
ATIS 126.35	LONE STAR APP CON 125.2 343.65	EXECUTIVE TOWER★ 127.25 (CTAF) 0	GND CON 119.475	UNICOM 122.95
-----------------------	--	--	---------------------------	-------------------------



SC-2, 14 MAY 2026 to 11 JUN 2026

SC-2, 14 MAY 2026 to 11 JUN 2026

ELEV 661	D	TDZE 660
----------	----------	----------



CATEGORY	A	B	C	D
LPV DA		860-3/4	200 (200-3/4)	
LNAV/VNAV DA		993-1	333 (400-1)	
LNAV MDA	1080-1	420 (500-1)	1080-1 1/8	420 (500-1 1/8)
CIRCLING	1160-1 499 (500-1)	1220-1 559 (600-1)	1340-2 679 (700-2)	1400-2 1/4 739 (800-2 1/4)

REIL Rwy 13, 17, 31 and 35
 MIRL Rwy 13-31 and 17-35 **L**

DALLAS, TEXAS
Amdt 1C 05OCT23

32°41'N-96°52'W

RNAV (GPS) RWY 31

DALLAS EXEC (R.BD)