

DALLAS, TEXAS

AL-742 (FAA)

26078

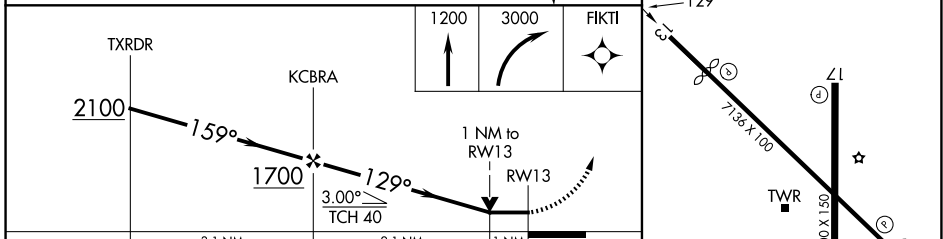
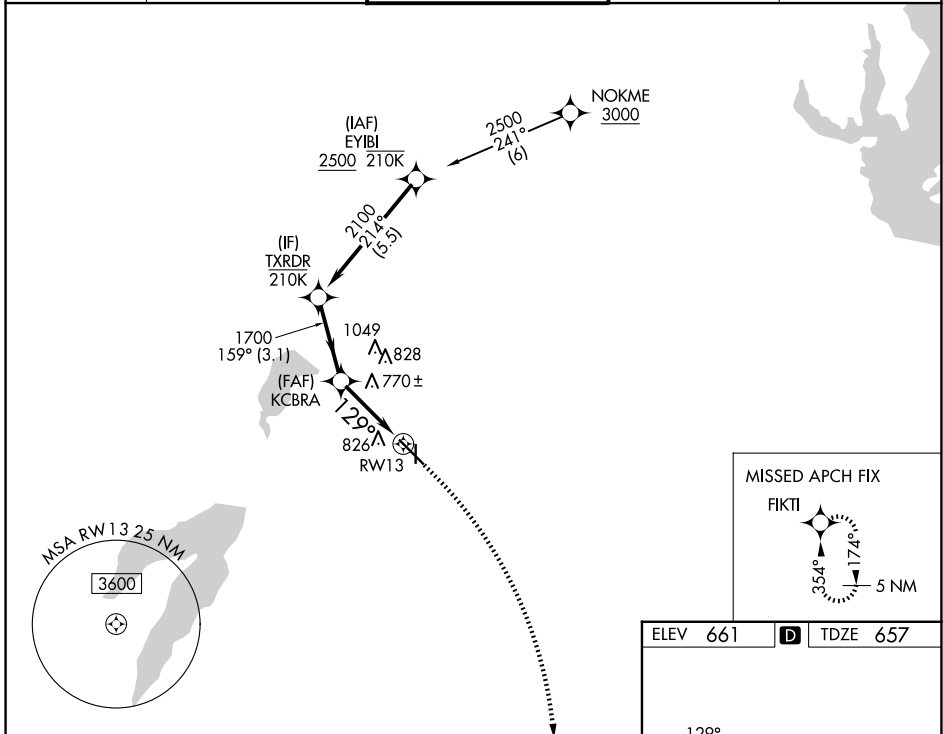
WAAS CH <b>50247</b> <b>W13B</b>	APP CRS <b>129°</b>	Rwy Ldg TDZE <b>657</b> Apt Elev <b>661</b>	<b>5537</b> <b>657</b> <b>661</b>
--	------------------------	---	---

# RNAV (GPS) Z RWY 13

DALLAS EXEC (R.B.D)

RNP APCH-GPS.		MISSED APPROACH: Climb to 1200 then climbing right turn to 3000 direct FIKTI and hold.	
Rwy 13 helicopter visibility reduction below 3/4 SM NA.			

ATIS <b>126.35</b>	LONE STAR APP CON <b>125.2 343.65</b>	EXECUTIVE TOWER ★ <b>127.25 (CTAF) 0</b>	GND CON <b>119.475</b>	UNICOM <b>122.95</b>
-----------------------	--	---	---------------------------	-------------------------



ELEV 661	TDZE 657				
CATEGORY	A	B	C	D	
LP MDA	1020-1 363 (400-1)				
LNAV MDA	1060-1 403 (400-1)	1060-1 1/8 403 (400-1 1/8)			
CIRCLING	1160-1 499 (500-1)	1220-1 559 (600-1)	1340-2 679 (700-2)	1400-2 1/4 739 (800-2 1/4)	REIL Rwy 13, 17, 31 and 35 MIRL Rwy 13-31 and 17-35

DALLAS, TEXAS  
Orig 12JUN25

32°41'N-96°52'W

# RNAV (GPS) Z RWY 13

DALLAS EXEC (R.B.D)

SC-2, 14 MAY 2026 to 11 JUN 2026

SC-2, 14 MAY 2026 to 11 JUN 2026