

BHHIA THREE ARRIVAL (RNAV) Transition Routes

FORT LAUDERDALE, FLORIDA

MIAMI APP CON  
120.5 350.225  
FLL D-ATIS  
135.0  
FXE ATIS  
119.85  
OPF ATIS  
125.9  
PMP ATIS  
120.55

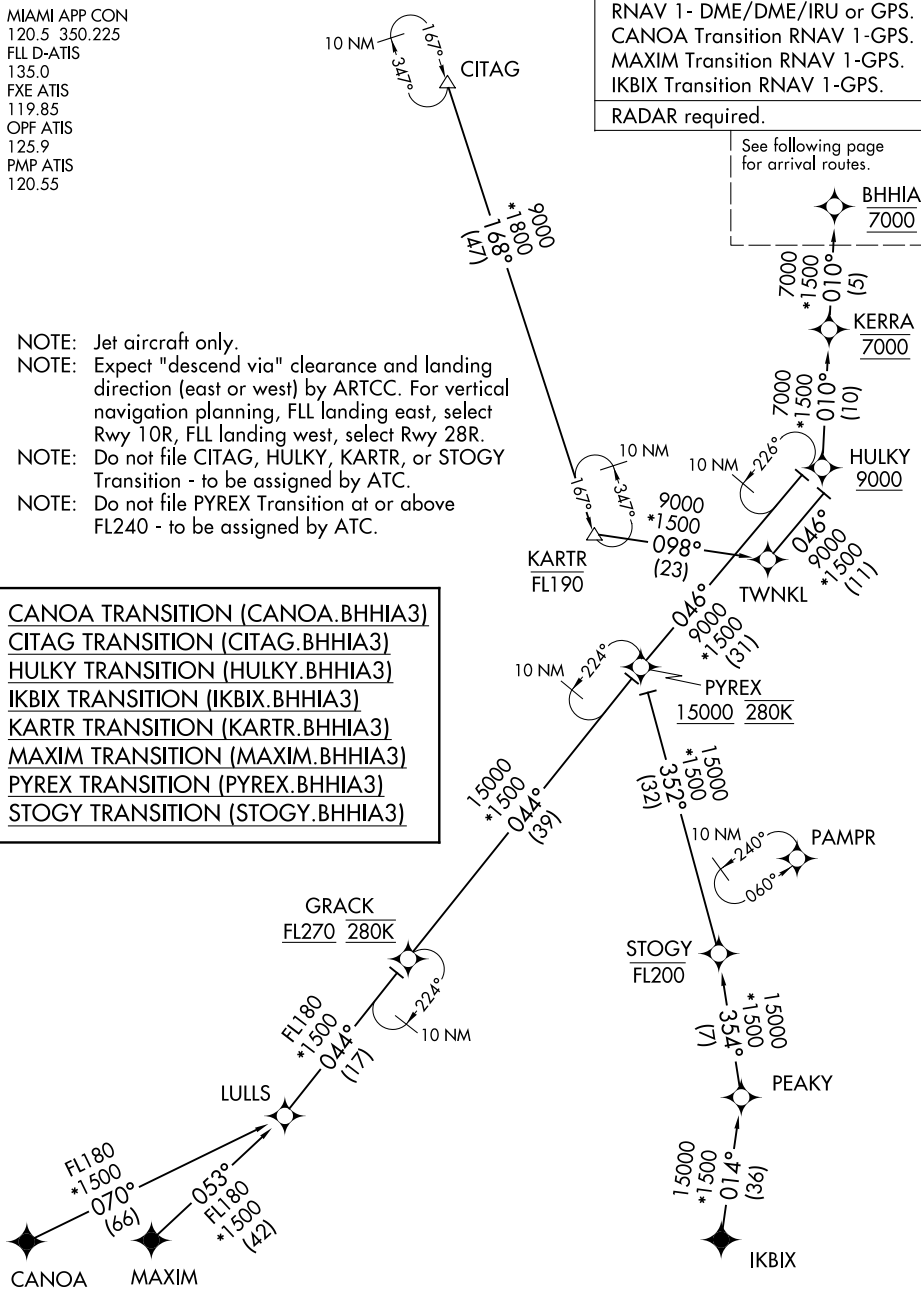
RNAV 1 - DME/DME/IRU or GPS.  
CANOA Transition RNAV 1-GPS.  
MAXIM Transition RNAV 1-GPS.  
IKBIX Transition RNAV 1-GPS.

RADAR required.

See following page  
for arrival routes.

- NOTE: Jet aircraft only.
- NOTE: Expect "descend via" clearance and landing direction (east or west) by ARTCC. For vertical navigation planning, FLL landing east, select Rwy 10R, FLL landing west, select Rwy 28R.
- NOTE: Do not file CITAG, HULKY, KARTR, or STOGY Transition - to be assigned by ATC.
- NOTE: Do not file PYREX Transition at or above FL240 - to be assigned by ATC.

- CANOA TRANSITION (CANOA.BHHIA3)
- CITAG TRANSITION (CITAG.BHHIA3)
- HULKY TRANSITION (HULKY.BHHIA3)
- IKBIX TRANSITION (IKBIX.BHHIA3)
- KARTR TRANSITION (KARTR.BHHIA3)
- MAXIM TRANSITION (MAXIM.BHHIA3)
- PYREX TRANSITION (PYREX.BHHIA3)
- STOGY TRANSITION (STOGY.BHHIA3)



(CONTINUED ON FOLLOWING PAGE)

NOTE: Chart not to scale.

SE-3, 14 MAY 2026 to 11 JUN 2026

SE-3, 14 MAY 2026 to 11 JUN 2026

BHHIA THREE ARRIVAL (RNAV) Transition Routes

FORT LAUDERDALE, FLORIDA

BHHIA THREE ARRIVAL (RNAV) (BHHIA, BHHIA3) 03NOV22

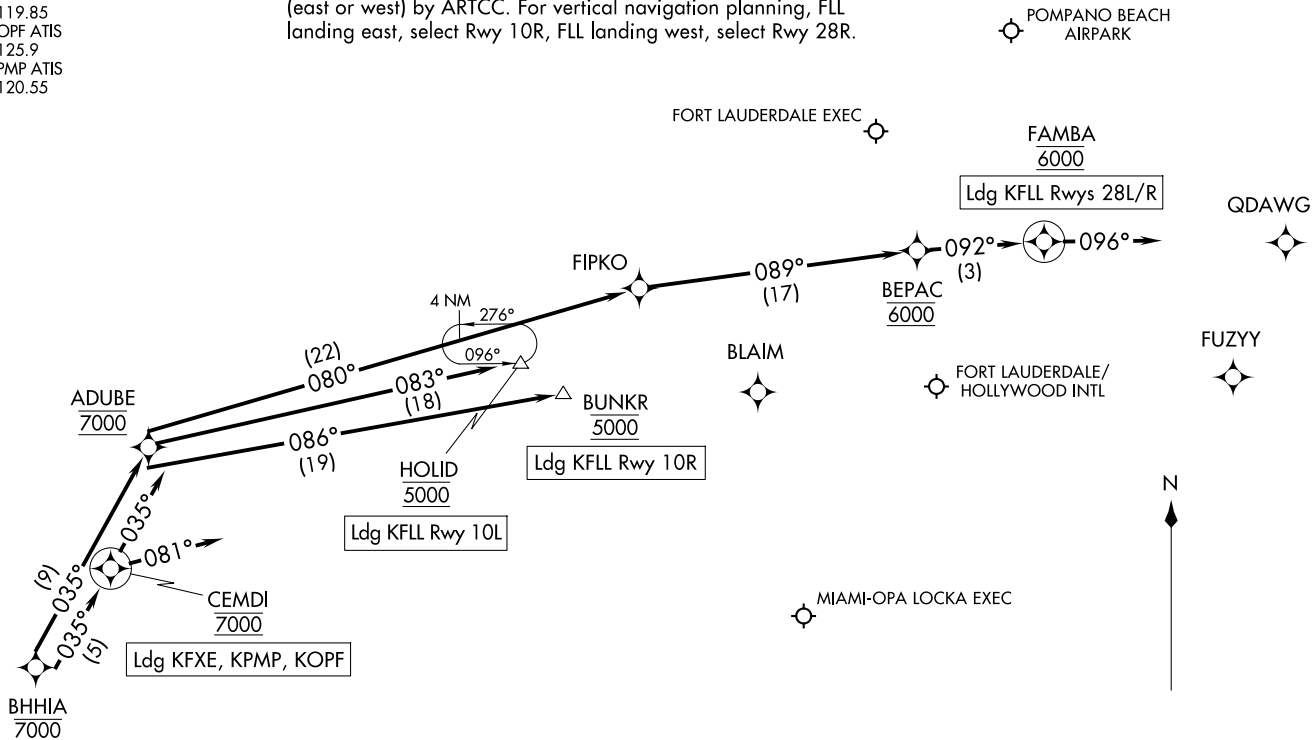
BHHIA THREE ARRIVAL (RNAV) Arrival Routes

FORT LAUDERDALE, FLORIDA

MIAMI APP CON  
120.5 350.225  
FLL D-ATIS  
135.0  
FXE ATIS  
119.85  
OPF ATIS  
125.9  
PMP ATIS  
120.55

NOTE: Jet aircraft only.  
NOTE: Expect "descend via" clearance and landing direction (east or west) by ARTCC. For vertical navigation planning, FLL landing east, select Rwy 10R, FLL landing west, select Rwy 28R.

RNAV 1-DME/DME/IRU or GPS.  
RADAR required.



(NARRATIVE ON FOLLOWING PAGE)

NOTE: Chart not to scale.

(BHHIA, BHHIA3) 22307

BHHIA THREE ARRIVAL (RNAV) Arrival Routes

FORT LAUDERDALE, FLORIDA

AL-744 (FAA)

ARRIVAL ROUTE DESCRIPTION

KFLL: From BHHIA on track 035° to cross ADUBE at 7000.

LANDING KFLL RUNWAY 10L: From ADUBE on track 083° to cross HOLID at 5000. Expect ILS or LOC Rwy 10L approach.

LANDING KFLL RUNWAY 10R: From ADUBE on track 086° to cross BUNKR at 5000. Expect ILS or LOC Rwy 10R approach.

LANDING KFLL RUNWAYS 28L/R: From ADUBE on track 080° to FIPKO, then on track 089° to cross BEPAC at 6000, then on track 092° to cross FAMBA at 6000, then on track 096°. Expect RADAR vectors to final approach course.

LANDING KFXE/KPMP: From BHHIA on track 035° to cross CEMDI at 7000, then on track 035°. Expect RADAR vectors to final approach course.

LANDING KOPF: From BHHIA on track 035° to cross CEMDI at 7000, then on heading 081°. Expect RADAR vectors to final approach course.

SE-3, 14 MAY 2026 to 11 JUN 2026

SE-3, 14 MAY 2026 to 11 JUN 2026