

LOC/DME I-ADI 111.75	APP CRS 276°	Rwy Ldg 8000
Chan 54 (Y)		TDZE 65
		Apt Elev 65

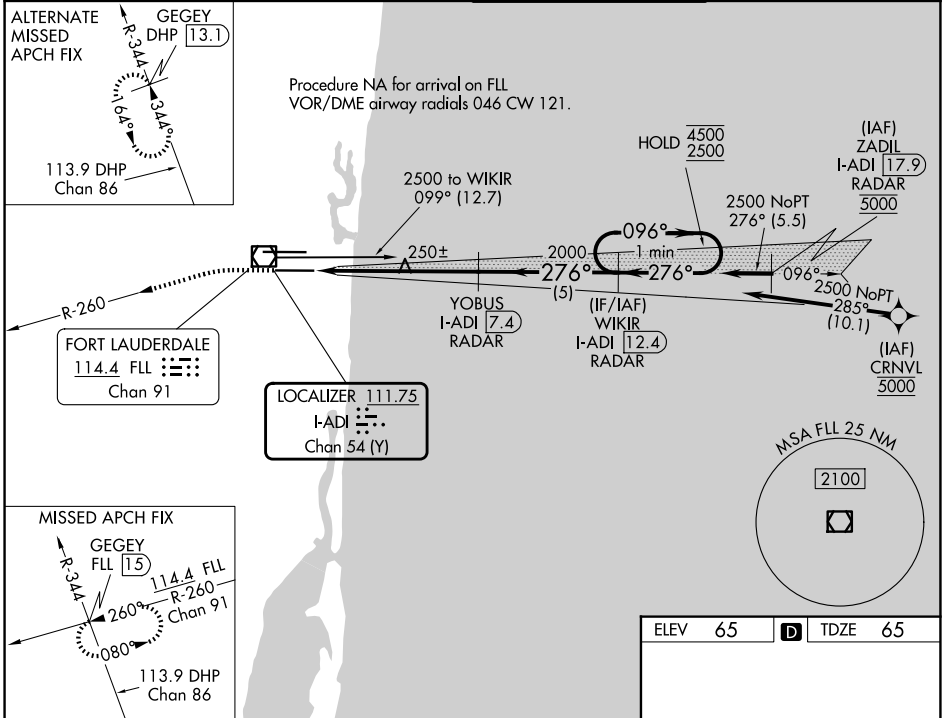
ILS or LOC RWY 28L

FORT LAUDERDALE/HOLLYWOOD INTL (FLL)

DME or RADAR required. RNP APCH-GPS. From CRNVL. RADAR required for procedure entry at ZADIL.
 Inop table does not apply to S-ILS-28L. Simultaneous approach authorized.

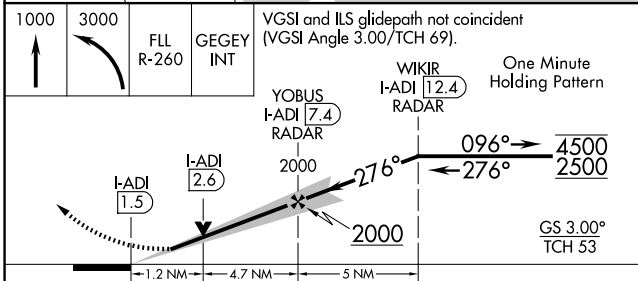
MALSF
 MISSED APPROACH: Climb to 1000 then climbing left turn to 3000 on FLL VOR/DME R-260 to GEGEY INT/FLL 15 DME and hold.

D-ATIS 135.0	MIAMI APP CON 133.775 285.6	FORT LAUDERDALE TOWER 119.3 257.8	GND CON 121.4
------------------------	---------------------------------------	---------------------------------------------	-------------------------

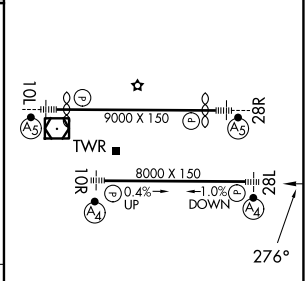


SE-3, 14 MAY 2026 to 11 JUN 2026

SE-3, 14 MAY 2026 to 11 JUN 2026



ELEV 65	D TDZE 65
---------	------------------



CATEGORY	A	B	C	D
S-ILS 28L	265/40		200 (200-¾)	
S-LOC 28L	500/40	435 (500-¾)	500/50	435 (500-1)
CIRCLING	680-1	615 (700-1)	800-2 735 (800-2)	800-2¼ 735 (800-2¼)

HIRL Rwy 10L-28R and 10R-28L				
FAF to MAP 5.9 NM				
Knots	60	90	120	150 180
Min:Sec	5:54	3:56	2:57	2:22 1:58