

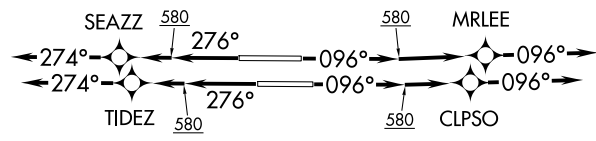
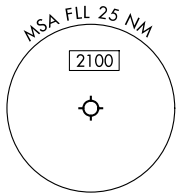
MAYNR THREE DEPARTURE (RNAV)  
(MAYNR3.MAYNR) 31 OCT 24

FORT LAUDERDALE, FLORIDA  
FORT LAUDERDALE/HOLLYWOOD INTL (FLL)

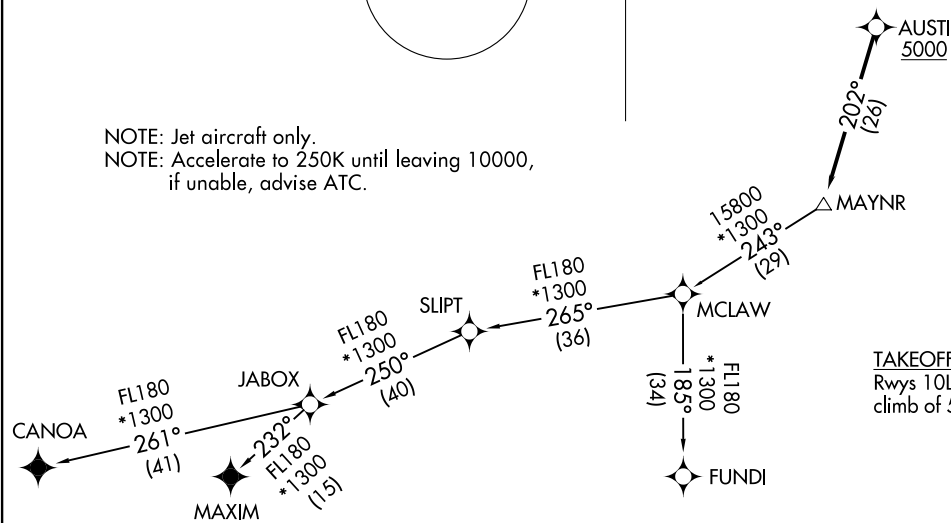
MIAMI DEP CON  
126.85 290.325  
D-ATIS  
135.0  
CLNC DEL  
128.4  
CPDLC  
GND CON  
121.4  
EXECUTIVE TOWER  
120.9 239.3  
FORT LAUDERDALE TOWER  
119.3 257.8  
POMPANO BEACH TOWER★  
125.4

RNAV 1 - DME/DME/IRU or GPS.  
From SLIPT to MAXIM: RNAV 1- GPS.  
From SLIPT to CANOA: RNAV 1- GPS.  
RADAR required for non-GPS equipped aircraft.  
RADAR required.

**TOP ALTITUDE:  
4000**



NOTE: Jet aircraft only.  
NOTE: Accelerate to 250K until leaving 10000,  
if unable, advise ATC.



TAKEOFF MINIMUMS  
Rwys 10L/R, 28L/R: Standard with minimum  
climb of 500'/NM to 580.

NOTE: Chart not to scale.

(CONTINUED ON FOLLOWING PAGE)

(MAYNR3.MAYNR) 25331  
MAYNR THREE DEPARTURE (RNAV)

AL-744 (FAA)  
FORT LAUDERDALE/HOLLYWOOD INTL (FLL)  
FORT LAUDERDALE, FLORIDA



DEPARTURE ROUTE DESCRIPTION  
SEE ADDITIONAL REQUIREMENTS ON AAUP

TAKEOFF RUNWAY 10L: Climb on heading 096° to 580, then direct MRLEE, then on track 096°, for vectors to cross AUSTI at or above 5000, thence. . . .

TAKEOFF RUNWAY 10R: Climb on heading 096° to 580, then direct CLPSO, then on track 096°, for vectors to cross AUSTI at or above 5000, thence. . . .

TAKEOFF RUNWAY 28L: Climb on heading 276° to 580, then direct TIDEZ, then on track 274°, for vectors to cross AUSTI at or above 5000, thence. . . .

TAKEOFF RUNWAY 28R: Climb on heading 276° to 580, then direct SEAZZ, then on track 274°, for vectors to cross AUSTI at or above 5000, thence. . . .

. . . on track 202° to MAYNR, then on assigned transition, maintain ATC assigned altitude. Expect clearance to filed altitude within 10 minutes after departure.

CANOA TRANSITION (MAYNR3.CANOA)

FUNDI TRANSITION (MAYNR3.FUNDI)

MAXIM TRANSITION (MAYNR3.MAXIM)

SE-3, 14 MAY 2026 to 11 JUN 2026

SE-3, 14 MAY 2026 to 11 JUN 2026