

(TARPN.TARPN3) 25107

TARPN THREE ARRIVAL (RNAV)

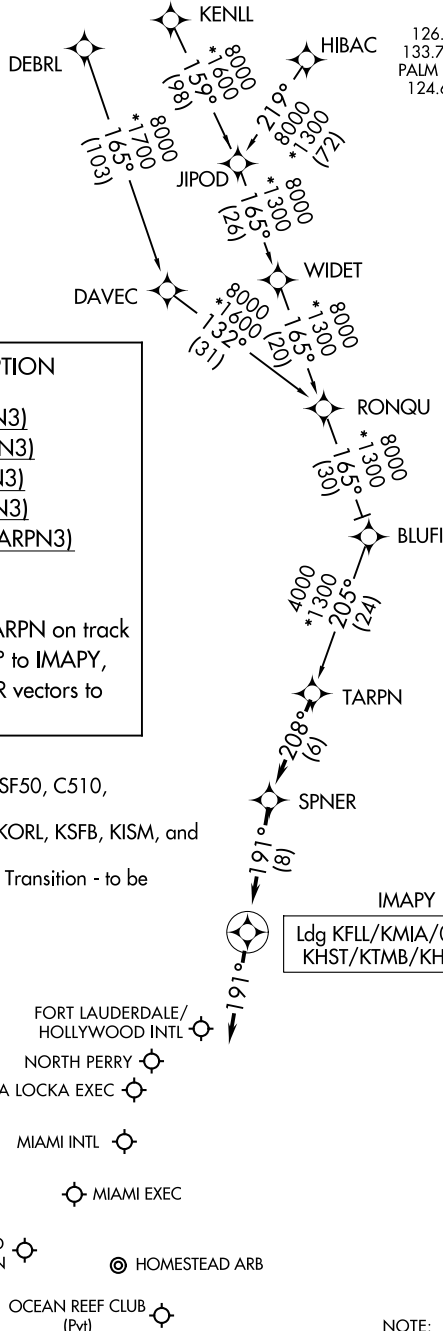
AL-744 (FAA)

FORT LAUDERDALE, FLORIDA

RNAV 1 - DME/DME/IRU or GPS.

RADAR required.

MIAMI APP CON
126.05 251.1 (9000)
133.775 371.9 (7000)
PALM BEACH APP CON
124.6 317.4 (12000)
FLL D-ATIS
135.0
HWO ATIS
135.475
KHST ATIS *
132.275 269.9
MIA D-ATIS
119.15
OPF ATIS
125.9
TMB ATIS
124.0
X51 AWOS-3
118.375



ARRIVAL ROUTE DESCRIPTION

DEBRL TRANSITION (DEBRL.TARPN3)

HIBAC TRANSITION (HIBAC.TARPN3)

JIPOD TRANSITION (JIPOD.TARPN3)

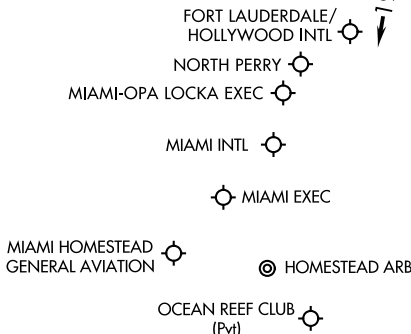
KENLL TRANSITION (KENLL.TARPN3)

RONQU TRANSITION (RONQU.TARPN3)

LANDING ALL AIRPORTS: From TARPN on track 208° to SPNER, then on track 191° to IMAPY, then on track 191°. Expect RADAR vectors to final approach course.

- NOTE: Turboprop and EA50, E50P, SF50, C510, and C525 aircraft only.
- NOTE: JIPOD Transition for KMCO, KORL, KSFB, KISM, and KLEE departures only.
- NOTE: Do not file DEBRL or RONQU Transition - to be assigned by ATC.

Ldg KFLL/KMIA/O7FA/X51/
KHST/KTMB/KHWO/KOPF



NOTE: Chart not to scale.

TARPN THREE ARRIVAL (RNAV)

(TARPN.TARPN3) 19MAY22

FORT LAUDERDALE, FLORIDA

SE-3, 14 MAY 2026 to 11 JUN 2026

SE-3, 14 MAY 2026 to 11 JUN 2026