


LOC I-FTY 109.1	APP CRS 085°	Rwy Ldg TDZE 5797 808	Apt Elev 841
---------------------------	------------------------	---------------------------------	------------------------

ILS or LOC RWY 8

FULTON COUNTY EXEC/CHARLIE BROWN FLD (F'TY)

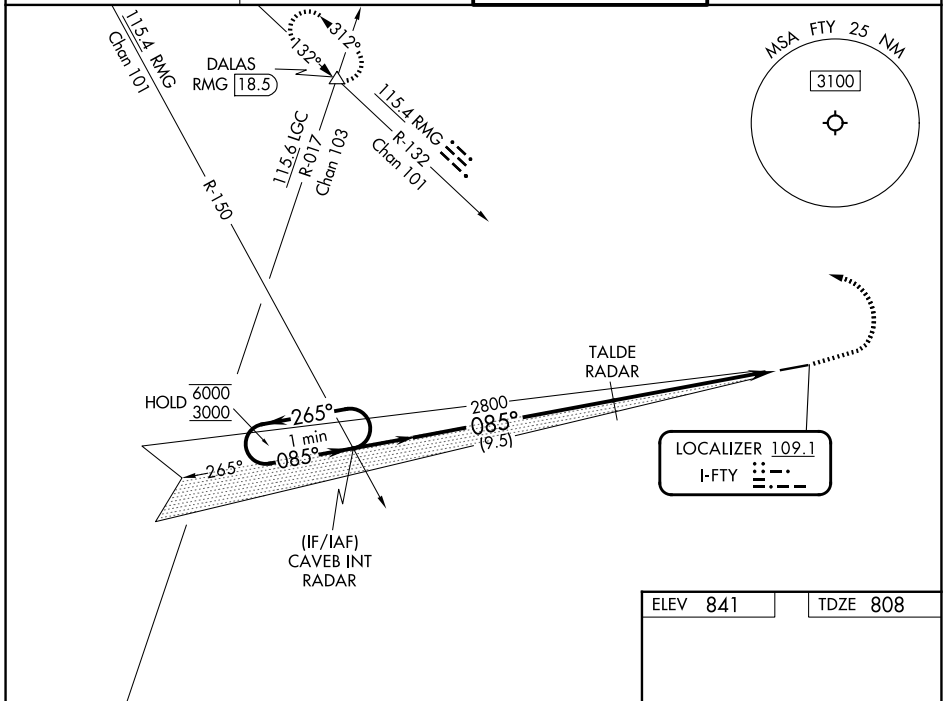
RADAR required to define TALDE.
RADAR required for procedure entry.

⚠ Rwy 8 helicopter visibility reduction below 3/4 SM NA. For inop ALS, increase S-LOC 8 Cat A visibility to 1 SM, Cat C/D visibility to 2 1/2 SM. Ridge with trees to 1299' MSL between FAF and runway threshold may be obscured by clouds even with airfield ceiling at or above procedure minimums.

MALSR 

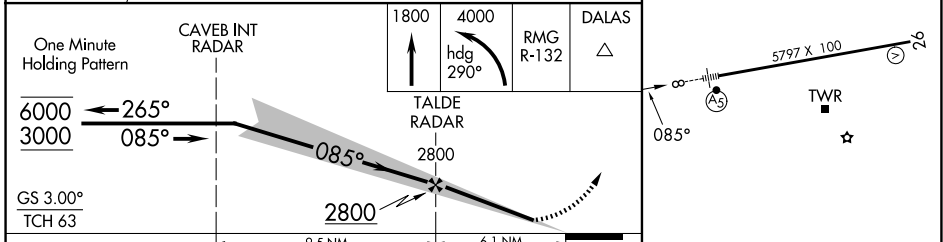
MISSED APPROACH: Climb to 1800 then climbing left turn to 4000 on heading 290° and RMG R-132 to DALAS INT/ RMG VORTAC 18.5 DME and hold.

ATIS 120.175	ATLANTA APP CON 121.0 268.7	FULTON COUNTY TOWER 118.45 257.8	GND CON 121.7 348.6
------------------------	---------------------------------------	--	-------------------------------



SE-4, 14 MAY 2026 to 11 JUN 2026

SE-4, 14 MAY 2026 to 11 JUN 2026



ELEV 841	TDZE 808
One Minute Holding Pattern	CAVEB INT RADAR
6000 3000	2800
GS 3.00° TCH 63	2800
CATEGORY	A B C D
S-ILS 8	1058-1/2 250 (300-1/2)
S-LOC 8	1640-3/4 832 (800-3/4) 1640-17/8 832 (800-17/8)
CIRCLING	1640-1 799 (800-1) 1640-1 799 (800-1 1/4) 1740-2 3/4 899 (900-2 3/4) 1740-3 899 (900-3)
HIRL Rwy 8-26 REIL Rwy 26	FAF to MAP 6.1 NM
Knots	60 90 120 150 180
Min:Sec	6:06 4:04 3:03 2:26 2:02

ILS or LOC RWY 8