

WAAS CH 48944 W32A	APP CRS 325°	Rwy Ldg 4538 TDZE 337 Apt Elev 345
--	------------------------	---

RNAV (GPS) RWY 32

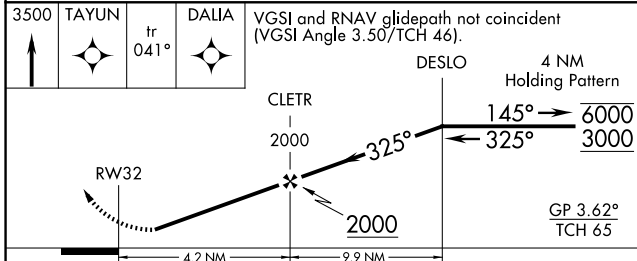
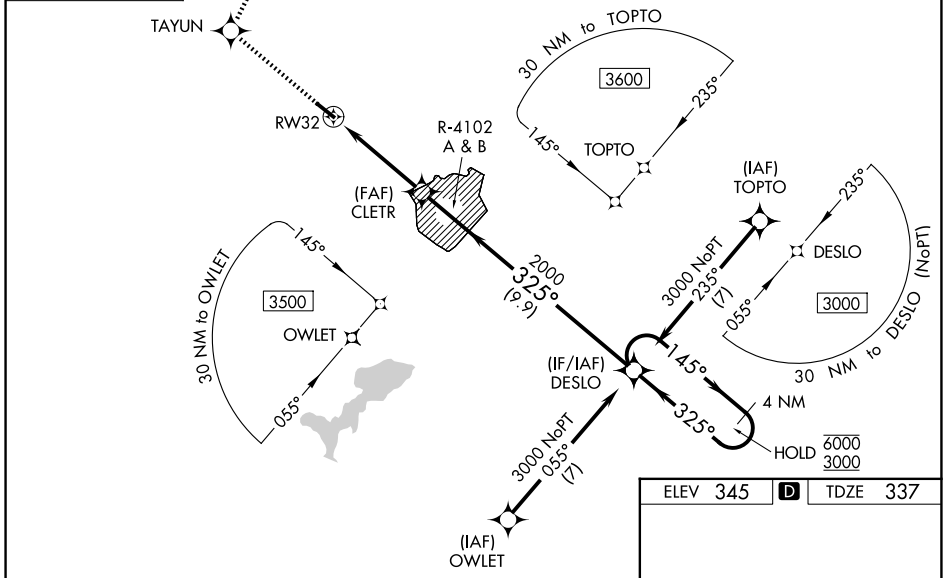
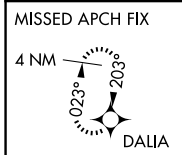
FITCHBURG MUNI (FIT)

RNP APCH - GPS.

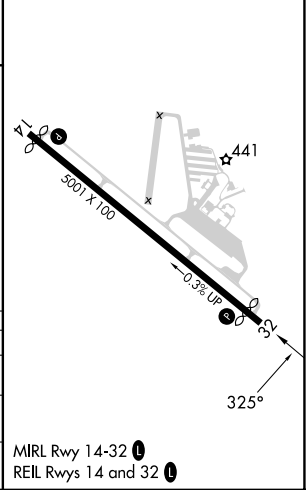
⚠ Rwy 32 helicopter visibility reduction below 1 SM NA.
⚠ Procedure NA when R-4102 A & B are active.
❄ -21°C Circling NA southwest of Rwy 14-32 at night.

MISSED APPROACH: Climb to 3500 direct TAYUN and on track 041° to DALIA and hold.

ASOS 135.175	BOSTON APP CON 124.4 279.6	UNICOM 122.7 (CTAF)	123.0 Ⓛ
------------------------	--------------------------------------	-------------------------------	-----------------------



ELEV 345	D	TDZE 337
----------	----------	----------



CATEGORY	A	B	C	D
LPV DA	773-1¼		436 (500-1¼)	NA
LNVA MDA	960-1	623 (700-1)	960-1¼ 623 (700-1¼)	NA
CIRCLING	1080-1 735 (800-1)	1380-1½ 1035 (1100-1½)	1520-3 1175 (1200-3)	NA

NE-1, 14 MAY 2026 to 11 JUN 2026

NE-1, 14 MAY 2026 to 11 JUN 2026