

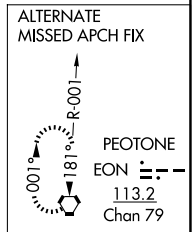
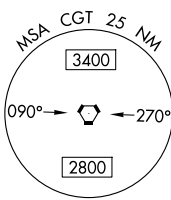
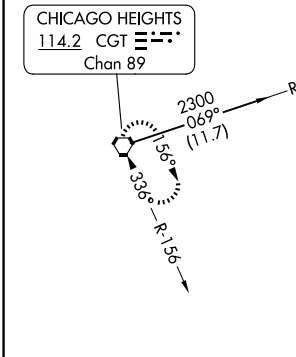
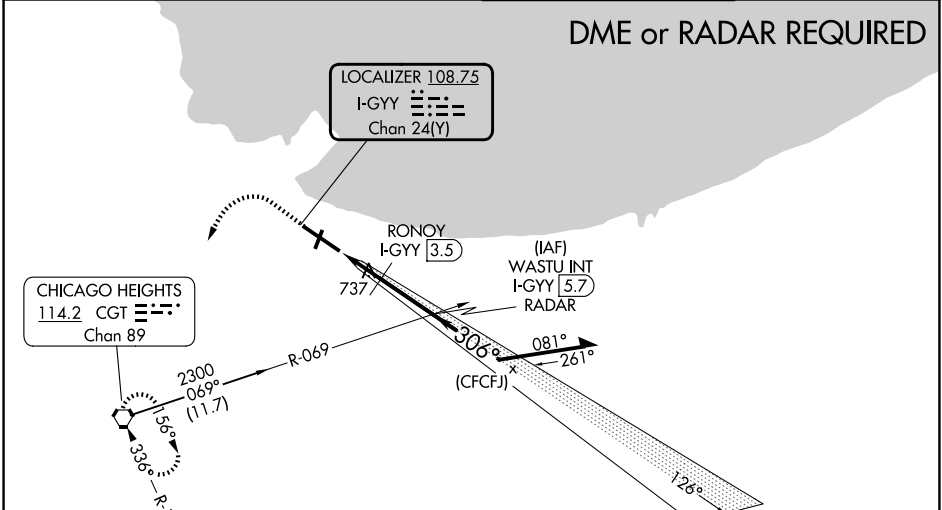
LOC I-GYY <b>108.75</b> Chan 24 (Y)	APP CRS <b>306°</b>	Rwy Ldg TDZE Apt Elev	<b>7959</b> <b>591</b> <b>597</b>
---	------------------------	-----------------------------	---

# COPTER ILS or LOC RWY 30

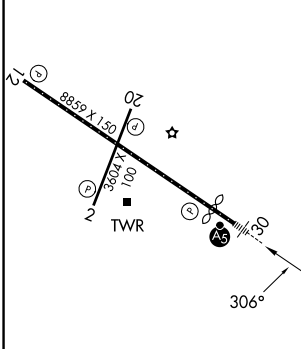
GARY/CHICAGO INTL (GYY)

<p>When local altimeter setting not received, use Chicago Midway Intl altimeter setting and increase all DA 46 feet and all MDA 60 feet. VDP NA with Chicago Midway Intl altimeter setting.</p>	<p>MALS R</p>	<p>MISSED APPROACH: Climb to 1500 then climbing left turn to 2300 direct CGT VORTAC and hold.</p>
---	---------------	---

D-ATIS <b>134.575</b>	CHICAGO APP CON <b>133.1 285.6</b>	GARY TOWER * <b>125.6 (CTAF) 0</b>	GND CON <b>121.9</b>
--------------------------	---------------------------------------	---------------------------------------	-------------------------



ELEV 597	<b>D</b>	TDZE 591
----------	----------	----------



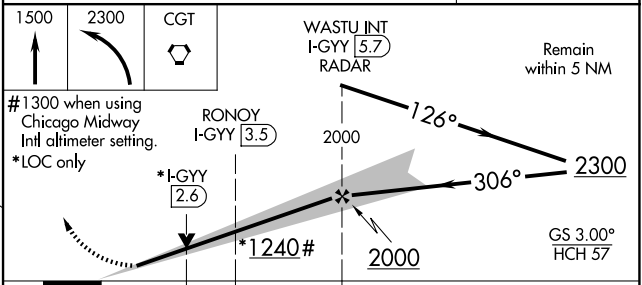
REIL Rwy 2, 12 and 20

HIRL Rwy 12-30

MIRL Rwy 2-20

FAF to MAP 4.3 NM

Knots	45	60	75	90	105
Min:Sec	5:44	4:18	3:26	2:52	2:27



CATEGORY	COPTER
S-ILS 30	791-¼ 200 (200-¼)
S-LOC 30	1240-¼ 649 (700-¼)
RONOY FIX MINIMUMS	
S-LOC 30	1000-¼ 409 (500-¼)

EC-2, 14 MAY 2026 to 11 JUN 2026

EC-2, 14 MAY 2026 to 11 JUN 2026