

CHICAGO APP CON  
133.1 285.6  
GY D-ATIS  
134.575

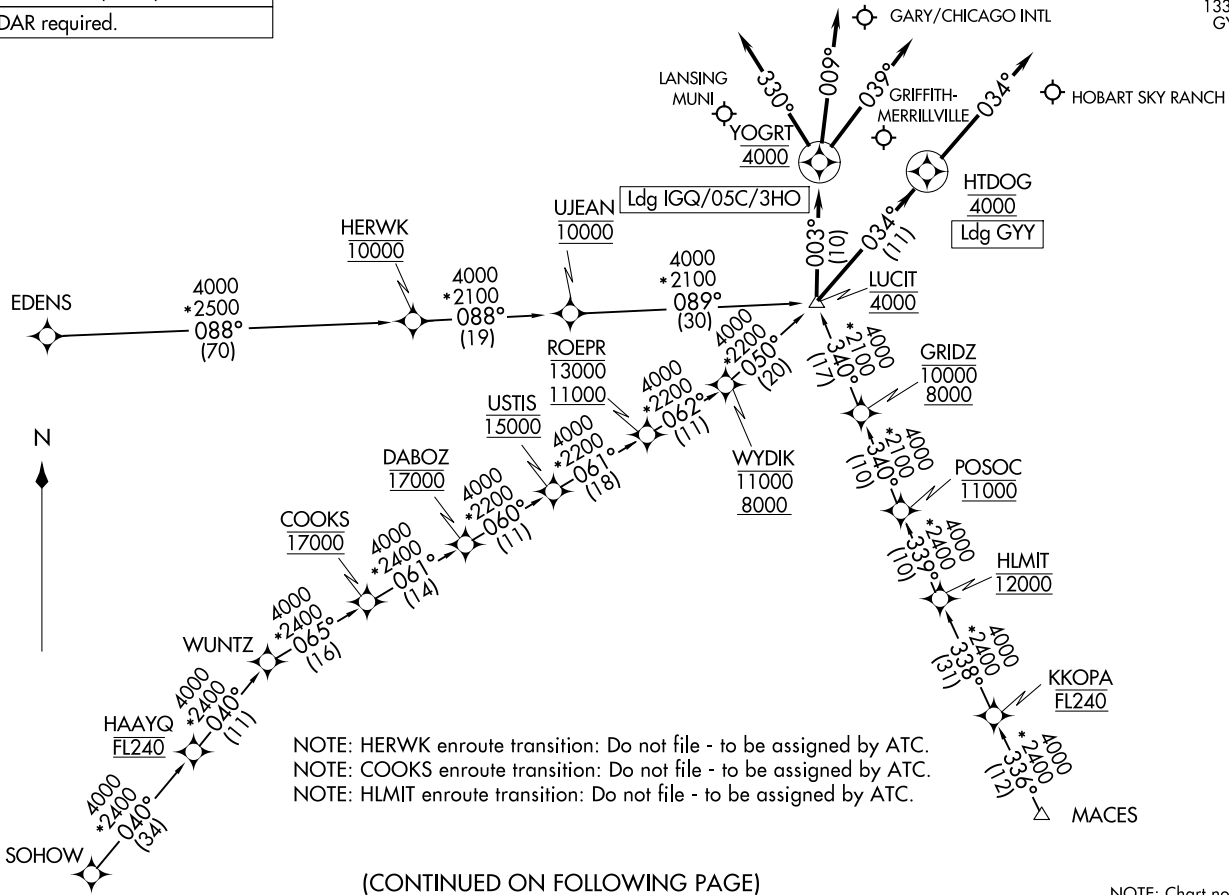
RNAV 1 - DME/DME/IRU or GPS.

RADAR required.

(LUCIT.LUCIT3) 26022  
LUCIT THREE ARRIVAL (RNAV)

AL-748 (FAA)

GARY/CHICAGO, INDIANA



NOTE: HERWK enroute transition: Do not file - to be assigned by ATC.  
NOTE: COOKS enroute transition: Do not file - to be assigned by ATC.  
NOTE: HLMIT enroute transition: Do not file - to be assigned by ATC.

(CONTINUED ON FOLLOWING PAGE)

NOTE: Chart not to scale.

LUCIT THREE ARRIVAL (RNAV)  
(LUCIT.LUCIT3) 31OCT24

GARY/CHICAGO, INDIANA

ARRIVAL ROUTE DESCRIPTION

COOKS TRANSITION (COOKS.LUCIT3):

EDENS TRANSITION (EDENS.LUCIT3):

HERWK TRANSITION (HERWK.LUCIT3):

HLMIT TRANSITION (HLMIT.LUCIT3):

MACES TRANSITION (MACES.LUCIT3):

SOHOW TRANSITION (SOHOW.LUCIT3):

LANDING 05C: From LUCIT on track 003° to cross YOGRT at 4000, then on track 009°. Expect RADAR vectors to final approach course.

LANDING 3HO: From LUCIT on track 003° to cross YOGRT at 4000, then on track 039°. Expect RADAR vectors to final approach course.

LANDING GYY: From LUCIT on track 034° to cross HTDOG at 4000, then on track 034°. Expect RADAR vectors to final approach course.

LANDING IGQ: From LUCIT on track 003° to cross YOGRT at 4000, then on track 330°. Expect RADAR vectors to final approach course.

EC-2, 14 MAY 2026 to 11 JUN 2026

EC-2, 14 MAY 2026 to 11 JUN 2026