

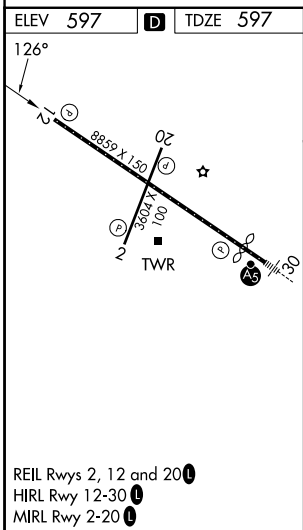
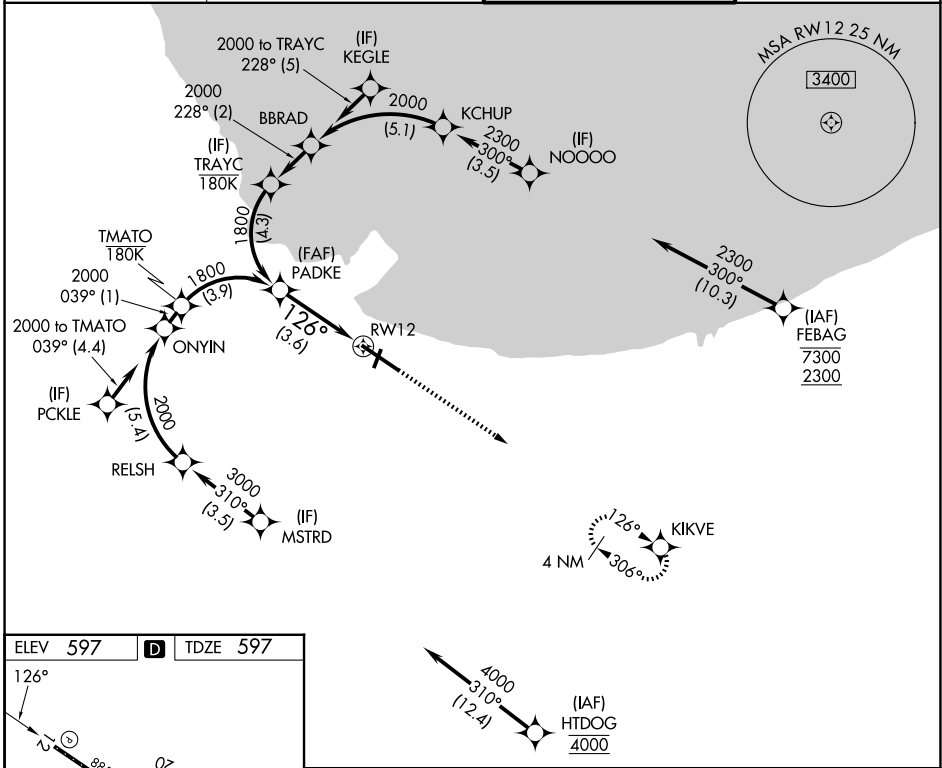
APP CRS	Rwy Ldg	7959
126°	TDZE	597
	Apt Elev	597

RNAV (RNP) Z RWY 12

GARY/CHICAGO INTL (GYY)

RNP AR APCH - GPS.	For uncompensated Baro-VNAV systems, procedure NA below -16°C or above 54°C.	MISSED APPROACH: Climb to 2400 direct KIKVE and hold.
--------------------	--	---

D-ATIS 134.575	CHICAGO APP CON 133.1 285.6	GARY TOWER ★ 125.6 (CTAF) 0	GND CON 121.9
--------------------------	---------------------------------------	---------------------------------------	-------------------------



VGSi and RNAV glidepath not coincident (VGSi angle 3.00/TCH 50).		2400	KIKVE
See planview for multiple IF locations.		↑	✧
GP 3.00° TCH 60	1800	126°	RWY 12
3.6 NM			
CATEGORY	A	B	C
RNP 0.10 DA		913-7/8	316 (400-7/8)
RNP 0.30 DA		1043-1 3/8	446 (500-1 3/8)

AUTHORIZATION REQUIRED

EC-2, 14 MAY 2026 to 11 JUN 2026

EC-2, 14 MAY 2026 to 11 JUN 2026