

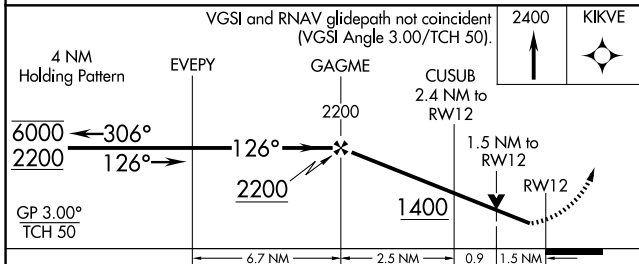
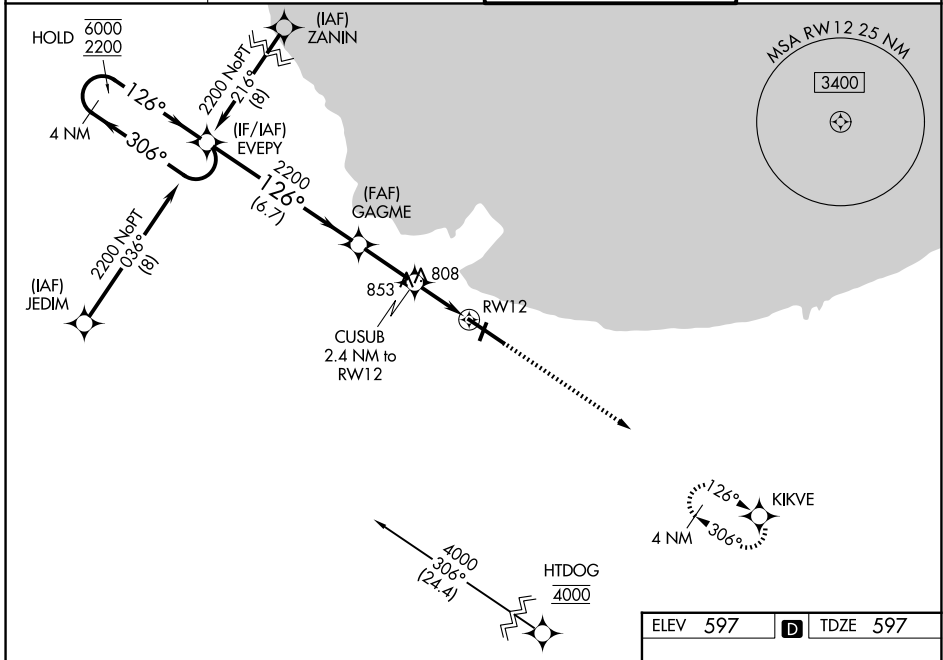
WAAS CH <b>70623</b> <b>W12A</b>	APP CRS <b>126°</b>	Rwy Ldg TDZE Apt Elev	<b>7959</b> <b>597</b> <b>597</b>
--	------------------------	-----------------------------	---

# RNAV (GPS) Y RWY 12

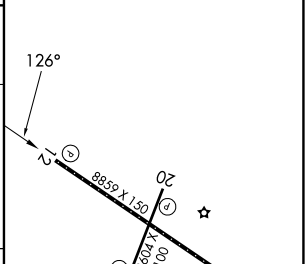
GARY/CHICAGO INTL (GYY)

RNP APCH - GPS.		MISSED APPROACH: Climb to 2400 direct KIKVE and hold.
<p><b>⚠</b> For uncompensated Baro-VNAV systems, LNAV/VNAV NA below -16°C or above 54°C. Rwy 12 helicopter visibility reduction below 3/4 SM NA.</p>		

D-ATIS <b>134.575</b>	CHICAGO APP CON <b>133.1 285.6</b>	GARY TOWER ★ <b>125.6 (CTAF) 0</b>	GND CON <b>121.9</b>
--------------------------	---------------------------------------	---------------------------------------	-------------------------



ELEV 597	<b>D</b>	TDZE 597
----------	----------	----------



CATEGORY	A	B	C	D
LPV DA	797-3/4 200 (200-3/4)			
LNAV/VNAV DA	1049-13/8 452 (500-13/8)			
LNAV MDA	1120-1	523 (600-1)	1120-1 1/2	523 (600-1 1/2)
CIRCLING	1160-1 563 (600-1)	1180-1 583 (600-1)	1400-2 1/4 803 (900-2 1/4)	1420-2 3/4 823 (900-2 3/4)

REIL Rwy 2, 12 and 20 **0**  
 HIRL Rwy 12-30 **0**  
 MIRL Rwy 2-20 **0**

EC-2, 14 MAY 2026 to 11 JUN 2026

EC-2, 14 MAY 2026 to 11 JUN 2026