

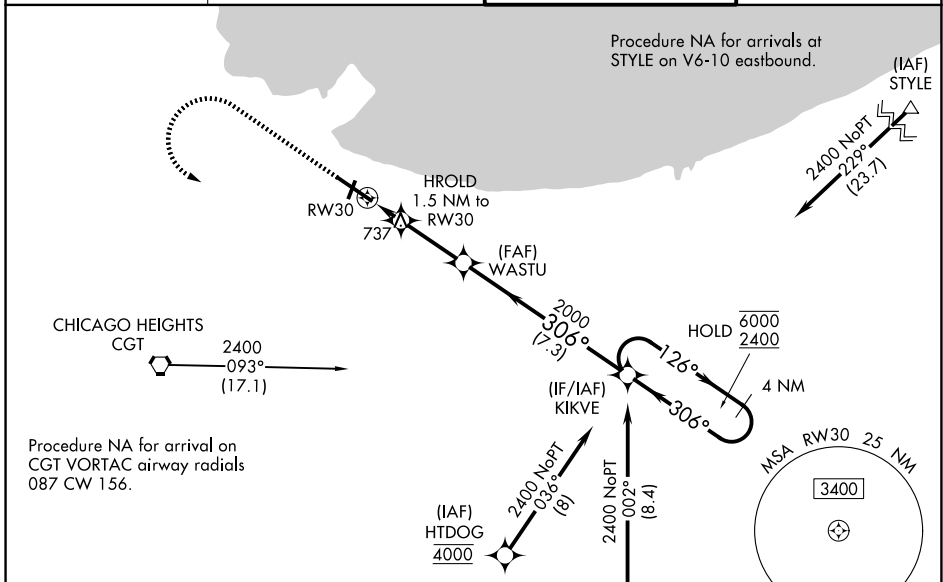
WAAS CH <b>78323</b> <b>W30A</b>	APP CRS <b>306°</b>	Rwy Ldg <b>7959</b> TDZE <b>591</b> Apt Elev <b>597</b>
--	------------------------	---

# RNAV (GPS) Y RWY 30

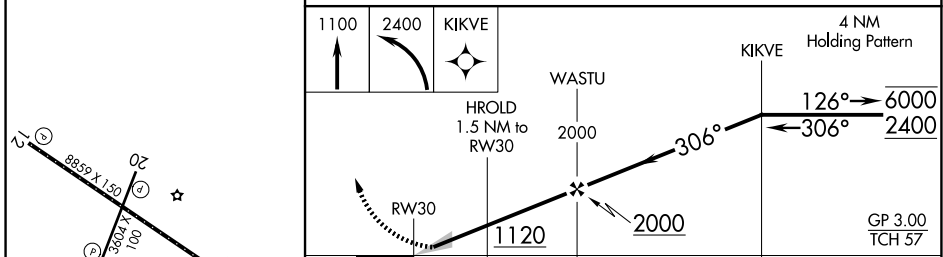
GARY/CHICAGO INTL (GYY)

RNP APCH - GPS.	MALSR	MISSED APPROACH: Climb to 1100 then climbing left turn to 2400 direct KIKVE and hold.
<p>⚠ For uncompensated Baro-VNAV systems, LNAV/VNAV NA below -16°C or above 54°C. For inop ALS, increase LNAV Cat C and D visibility to RVR 6000. ** RVR 1800 authorized with use of FD or AP or HUD to DA (NA when using Chicago Midway Intl altimeter setting).</p>		

D-ATIS <b>134.575</b>	CHICAGO APP CON <b>133.1 285.6</b>	GARY TOWER ★ <b>125.6 (CTAF)</b>	GND CON <b>121.9</b>
--------------------------	---------------------------------------	-------------------------------------	-------------------------



ELEV 597	<b>D</b>	TDZE 591
----------	----------	----------



REIL Rws 2, 12 and 20	HIRL Rwy 12-30	MIRL Rwy 2-20
1	1	1

1.5 NM	2.8 NM	7.3 NM		
1100	2400	KIKVE		
HROLD 1.5 NM to RW30	WASTU 2000	KIKVE	4 NM Holding Pattern	
RW30	1120	2000	GP 3.00 TCH 57	
1.5 NM	2.8 NM	7.3 NM		
CATEGORY	A	B	C	D
LPV DA**		791/24	200 (200-1/2)	
LNAV/VNAV DA		991/35	400 (400-5/8)	
LNAV MDA	1000/24	409 (500-1/2)	1000/40	409 (500-3/4)
CIRCLING	1160-1 563 (600-1)	1180-1 583 (600-1)	1400-2 1/4 803 (900-2 1/4)	1420-2 3/4 823 (900-2 3/4)

EC-2, 14 MAY 2026 to 11 JUN 2026

EC-2, 14 MAY 2026 to 11 JUN 2026