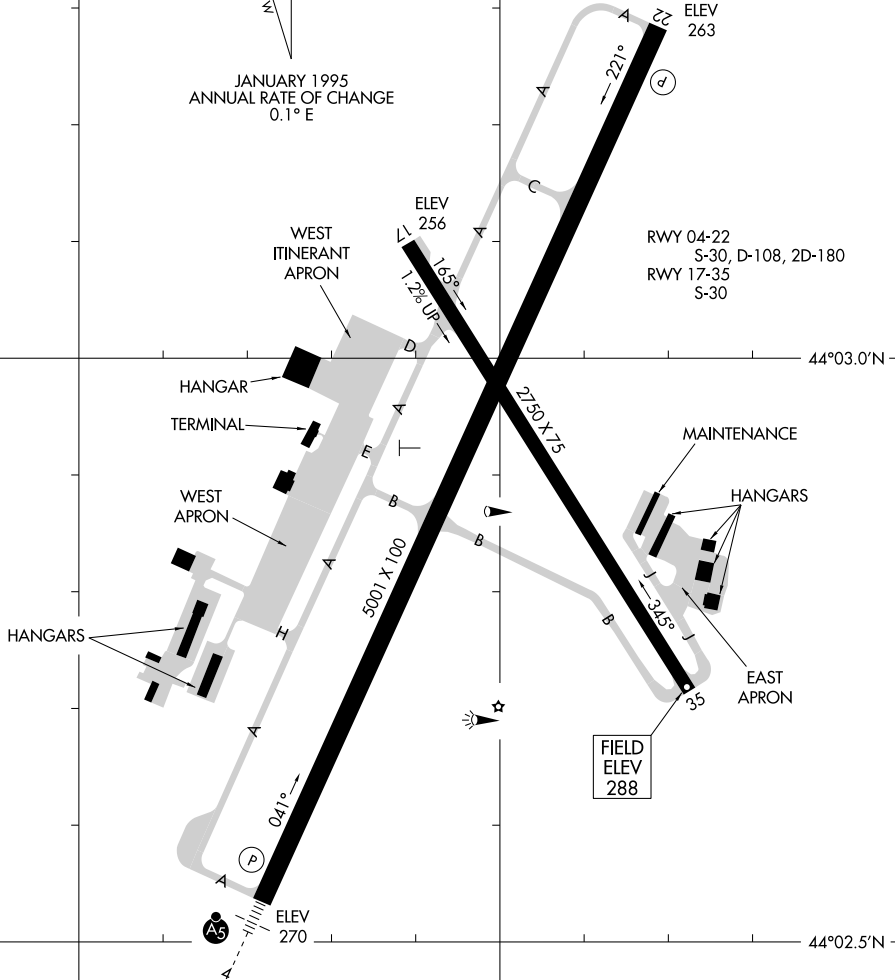


AWOS-3PT  
 118.025  
 CLNC DEL  
 124.05  
 CTAF/UNICOM  
 122.8

VAR 17° W  
 JANUARY 1995  
 ANNUAL RATE OF CHANGE  
 0.1° E



RWY 04-22  
 S-30, D-108, 2D-180  
 RWY 17-35  
 S-30

FIELD  
 ELEV  
 288

HIRL Rwy 4-22  
 MIRL Rwy 17-35  
 REIL Rwy 22

NE-1, 14 MAY 2026 to 11 JUN 2026

NE-1, 14 MAY 2026 to 11 JUN 2026