

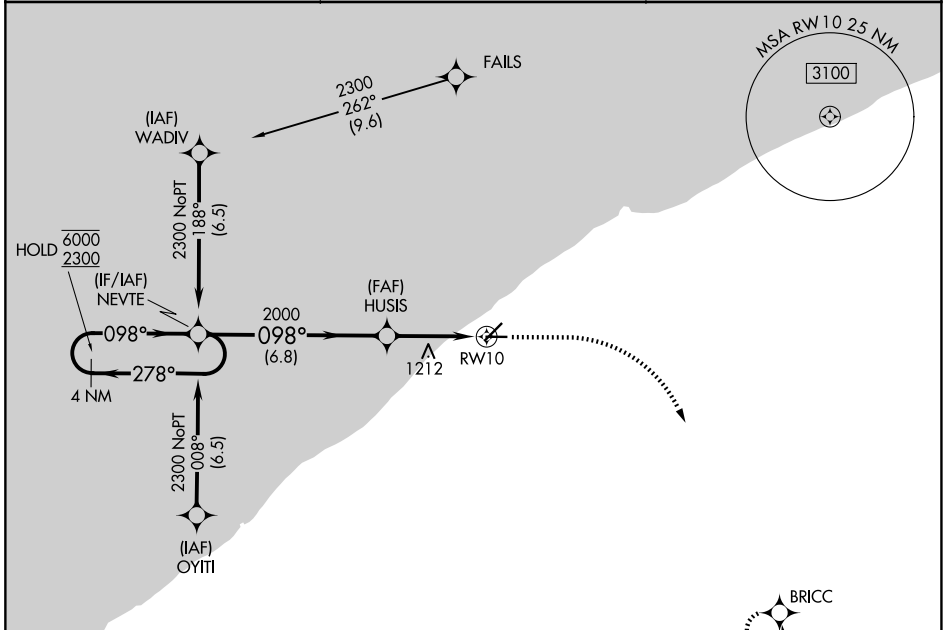
APP CRS	Rwy Ldg	4272
098°	TDZE	625
	Apt Elev	626

RNAV (GPS) RWY 10

LAKE COUNTY EXEC (LNN)

RNP APCH - GPS.	MISSED APPROACH: Climb to 1800 then climbing right turn to 2900 direct BRICC and hold.
Rwy 10 helicopter visibility reduction below 3/4 SM NA.	

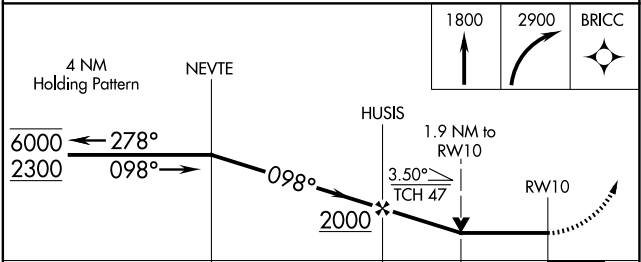
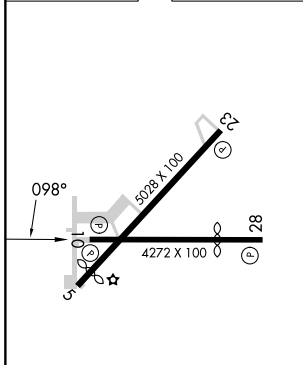
AWOS-3PT 119.225	CLEVELAND APP CON 125.35 346.325	UNICOM 122.725 (CTAF) 0
----------------------------	--	-----------------------------------



EC-2, 14 MAY 2026 to 11 JUN 2026

EC-2, 14 MAY 2026 to 11 JUN 2026

ELEV 626	TDZE 625
----------	----------



CATEGORY	A	B	C	D
LNNAV MDA	1360-1	735 (800-1)	1360-2 735 (800-2)	NA
CIRCLING	1360-1	734 (800-1)	1520-2 3/4 894 (900-2 3/4)	NA