

APP CRS	Rwy Ldg	4600
053°	TDZE	624
	Apt Elev	626

RNAV (GPS) RWY 5

LAKE COUNTY EXEC (LNN)

RNP APCH - GPS.

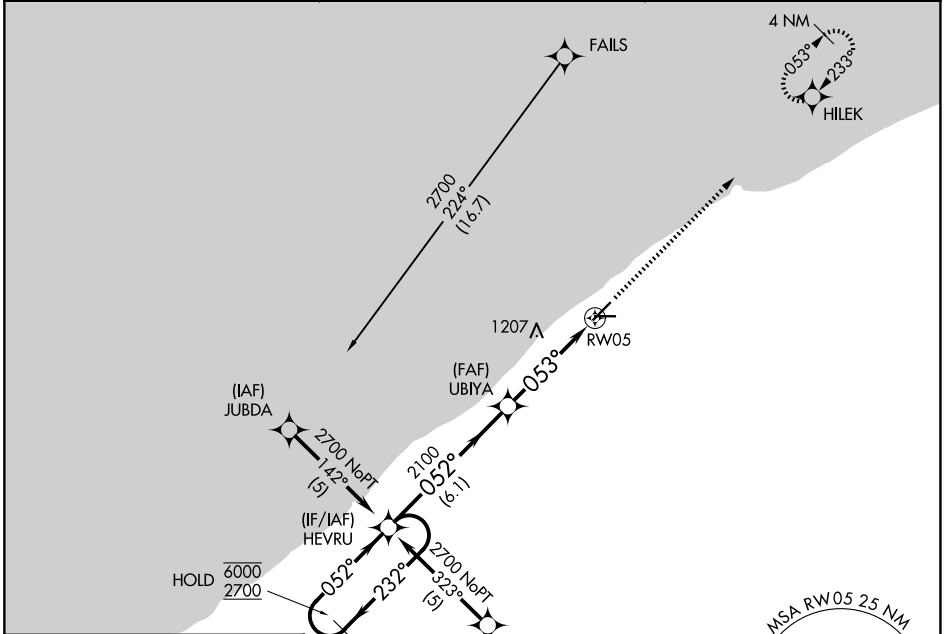
MISSED APPROACH: Climb to 2300 direct HILEK and hold.

Rwy 5 helicopter visibility reduction below ¼ SM NA.

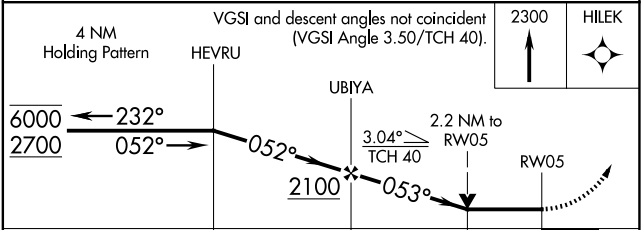
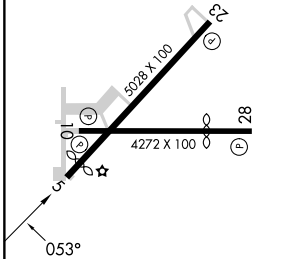
AWOS-3PT
119.225

CLEVELAND APP CON
125.35 346.325

UNICOM
122.725 (CTAF) 0



ELEV	626	TDZE	624
------	------------	------	------------



CATEGORY	A	B	C	D
LNAV MDA	1460-1 836 (900-1)	1460-1¼ 836 (900-1¼)	1460-2½ 836 (900-2½)	NA
CIRCLING	1460-1¼	834 (900-1¼)	1520-2¾ 894 (900-2¾)	NA

EC-2, 14 MAY 2026 to 11 JUN 2026

EC-2, 14 MAY 2026 to 11 JUN 2026