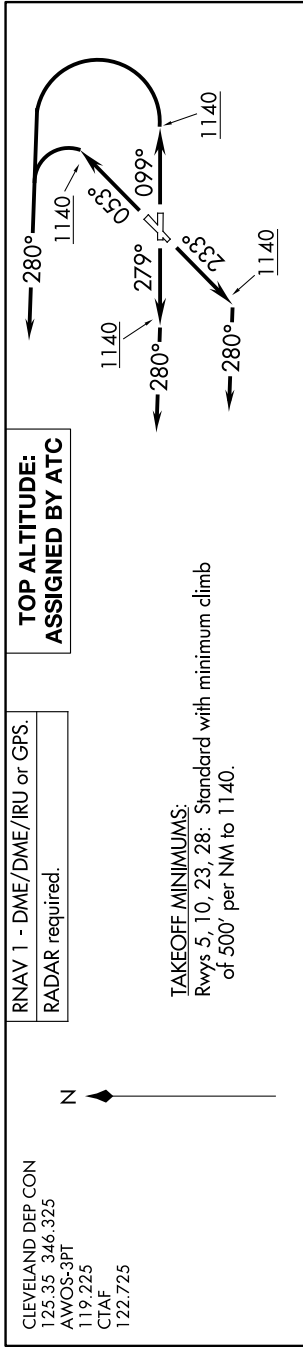


ZAAPA SIX DEPARTURE (RNAV)

EC-2, 14 MAY 2026 to 11 JUN 2026



RNAV 1 - DME/DME/IRU or GPS.
RADAR required.

CLEVELAND DEP CON
125.35 346.325
AWOS-3PT
119.225
CTAF
122.725

TAKEOFF MINIMUMS:
Rwys 5, 10, 23, 28: Standard with minimum climb of 500' per NM to 1140.

DEPARTURE ROUTE DESCRIPTION

TAKEOFF RUNWAY 5: Climb on heading 053° to 1140, then left turn heading 280° or as assigned by ATC for RADAR vectors to cross MOHUM at or above 9000, thence....

TAKEOFF RUNWAY 10: Climb on heading 099° to 1140, then left turn heading 280° or as assigned by ATC for RADAR vectors to cross MOHUM at or above 9000, thence....

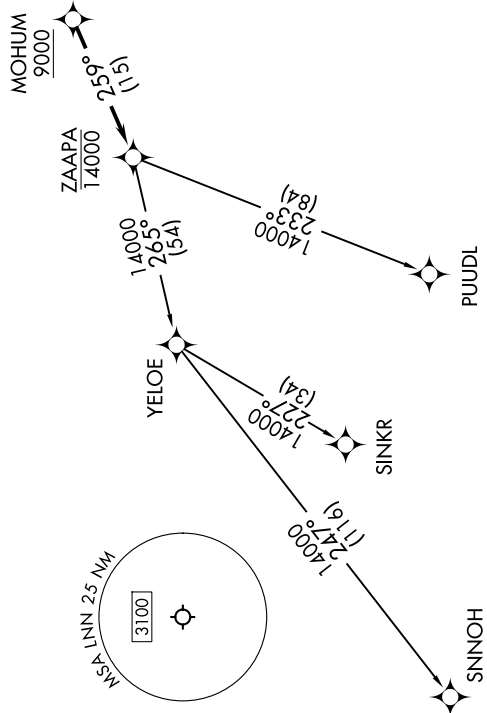
TAKEOFF RUNWAY 23: Climb on heading 233° to 1140, then on heading 280° or as assigned by ATC for RADAR vectors to cross MOHUM at or above 9000, thence....

TAKEOFF RUNWAY 28: Climb on heading 279° to 1140, then on heading 280° or as assigned by ATC for RADAR vectors to cross MOHUM at or above 9000, thence....

....on track 259° to cross ZAAPA at or below 14000, then on (transition). Maintain ATC assigned altitude, expect filed altitude ten minutes after departure.

PUUJL TRANSITION (ZAAPA6.PUUJL)
SINKR TRANSITION (ZAAPA6.SINKR)
SNNOH TRANSITION (ZAAPA6.SNNOH)

NOTE: PUUJL TRANSITION: For aircraft at or below FL220 only or as assigned by ATC.



NOTE: Chart not to scale.

ZAAPA SIX DEPARTURE (RNAV)

EC-2, 14 MAY 2026 to 11 JUN 2026