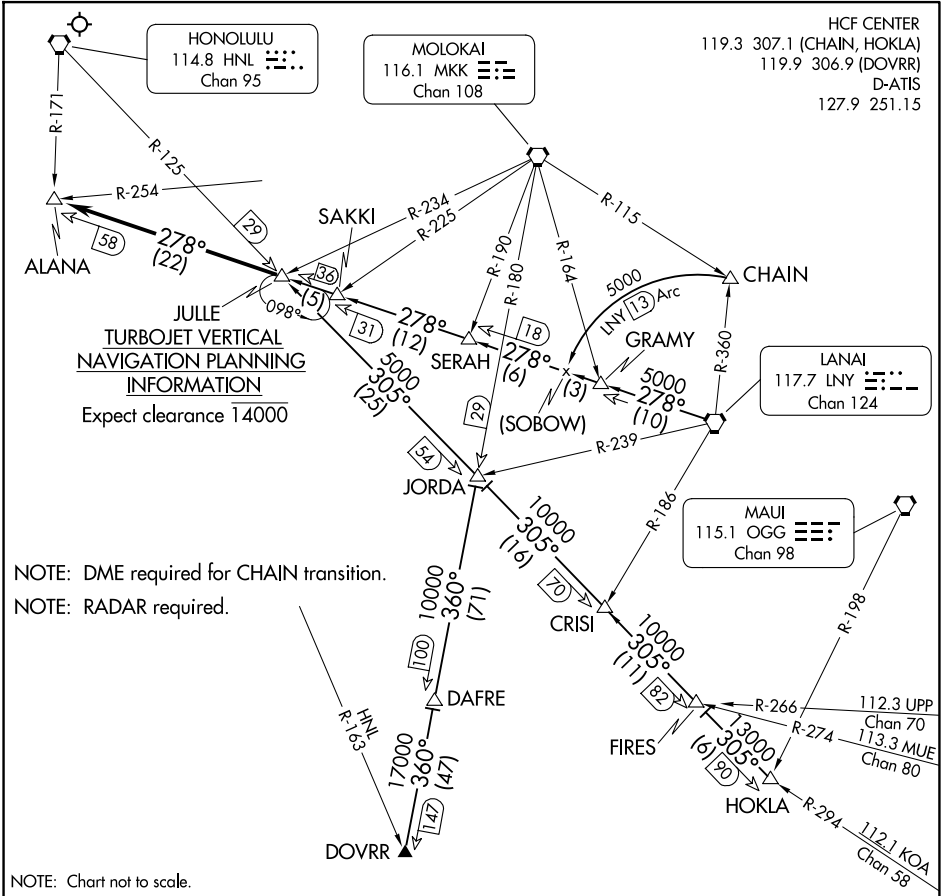


(JULLE.JULLE5) 23334

JULLE FIVE ARRIVAL

AL-754 (FAA)

DANIEL K INOUYE INTL (HNL) (PHNL)
HONOLULU, HAWAII



NOTE: DME required for CHAIN transition.

NOTE: RADAR required.

NOTE: Chart not to scale.

ARRIVAL ROUTE DESCRIPTION

CHAIN TRANSITION (CHAIN.JULLE5): From over CHAIN INT on LNY 13 DME CCW arc to SOBOW then via LNY R-278 to JULLE INT. Thence. . .

DOVRR TRANSITION (DOVRR.JULLE5): From over DOVRR INT via MKK R-180 to JORDA INT then via HNL R-125 to JULLE INT. Thence. . .

HOKLA TRANSITION (HOKLA.JULLE5): From over HOKLA INT via HNL R-125 and KOA R-294 on HNL R-125 to JULLE INT. Thence. . .

LANAI TRANSITION (LNY.JULLE5): From over LNY VORTAC via LNY R-278 to JULLE INT. Thence. . .

. . . From over JULLE INT on LNY R-278 to ALANA INT. Expect vectors to final approach course.

LOST COMMUNICATIONS: At ALANA INT proceed with the VOR or TACAN RWY 4R approach.

JULLE FIVE ARRIVAL

(JULLE.JULLE5) 25AUG11

HONOLULU, HAWAII
DANIEL K INOUYE INTL (HNL) (PHNL)

PAC. 14 MAY 2026 to 09 JUL 2026

PAC. 14 MAY 2026 to 09 JUL 2026