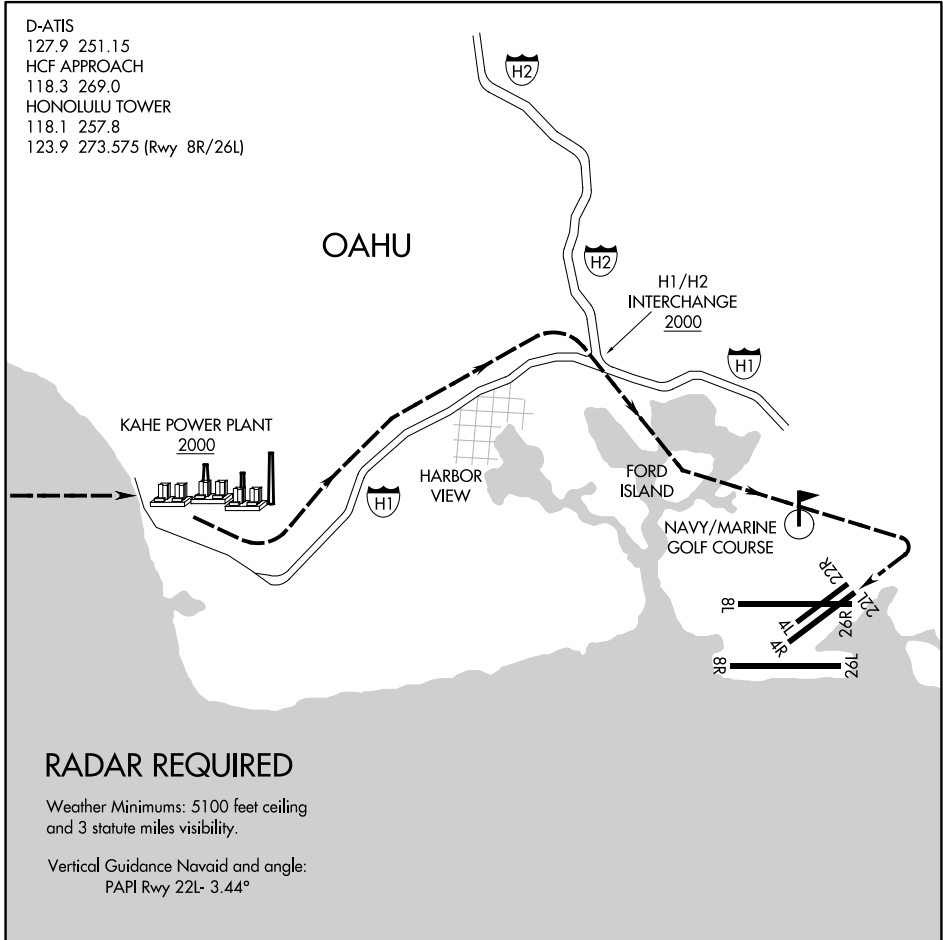


# KAHE POWER PLANT VISUAL RWY 22L

HONOLULU, HAWAII

D-ATIS  
 127.9 251.15  
 HCF APPROACH  
 118.3 269.0  
 HONOLULU TOWER  
 118.1 257.8  
 123.9 273.575 (Rwy 8R/26L)



PAC, 14 MAY 2026 to 09 JUL 2026

PAC, 14 MAY 2026 to 09 JUL 2026

## RADAR REQUIRED

Weather Minimums: 5100 feet ceiling  
 and 3 statute miles visibility.

Vertical Guidance Navaid and angle:  
 PAPI Rwy 22L- 3.44°

1 NM	2	3	4	5	6	7	8	9	10	11	12	13	14	15	16
------	---	---	---	---	---	---	---	---	----	----	----	----	----	----	----

### KAHE POWER PLANT VISUAL APPROACH RWY 22L

PROCEDURE NOT AUTHORIZED AT NIGHT

RESTRICTED TO CAT I AND CAT II AIRCRAFT ONLY

Pilots may expect landing Runway 22R.

# KAHE POWER PLANT VISUAL RWY 22L

HONOLULU, HAWAII